

Crew team ready
Fundraisers paying for competitive oars page 3

'Life in Silver Lake'
Marie Burke reflects on Lake's history page 5



Lady Bucs fall
in Marion's debut
See Sports, page 11

Belleville Times

85th Year No. 17

An Orechio Publication

Serving Belleville Since 1909

Thursday, April 7, 1994

50¢



Bunny meets baby - Angie Paserchia introduces the Easter Bunny to Corri Ann Conti, Joralemon Street's newest party guest. Paserchia sponsored her yearly party at the Recreation Center on April 2.

Across from the proposed Taco Bell...

Planning board mulls CVS mall at empty lot

By Richard Dickon

The planning board is considering an application for a strip mall on Washington Avenue, across the street from the site of a recently-approved Taco Bell restaurant project, according to Planning Board Chair Sebastian "Sam" Papa.

The property is across from the site of the former Mead Ford automobile dealership on Washington Avenue and Little Street. The planning board approved a Taco Bell for the site in February.

The property that once housed a Chevrolet automobile dealership is now in line for a CVS Pharmacy, a bank and other stores, according to Deputy Mayor Mario Drozd.

"The two projects would bring tax ratables back to Belleville after only about six months of vacancy," Drozd said.

Papa agreed that bringing these properties back as ratables was important.

"We're excited to get these properties going," he said, "We want to build up this end of town again."

In February, the Rose-Belleville Limited Partnership introduced their proposal for Washington Avenue, block 152, lots 33 and 37.

Attorney Robert Gaccione, speaking for the applicant, told the board the application was for a site plan and variance approval at the Mead Ford site.

Peter Pecorara, director of real estate, testified that the CVS would move from Main Street to Washington Avenue after a fire at the Main Street store suspended CVS from filling prescriptions.

The hours of operation would be 9 a.m. to 9 p.m., Pecorara said, with approximately 12 to 15 employees and a maximum of six at any one time. About 250 cars would frequent the site, along with walking and public transportation customers.

The strip mall will not get planning board approval without much discussion and many changes, Papa said.

"There are lots of questions that need to be answered, and a lot of adjustments need to be made to these plans," he said, without going into details.

The plan was briefly heard in February, but was adjourned

because of the lateness of the night.

Specifics of the plans have not been discussed at a public planning board meeting, according to planning officials.

Papa said the board will take as long as necessary to make sure that all the questions are heard and all the problems answered.

"This will be a long, drawn-out process," he said.

The planning board is scheduled to meet the second Wednesday of each month. The next meeting would fall on April 13.

The March meeting was cancelled after officials determined a quorum could not be reached.

By Richard Dickon

After protests, mostly from senior citizens, the Board of Education passed a final \$31 million 1994-95 school budget by a vote of 5-1 April 4 that would increase the tax levy by an average of about \$266 for a home assessed at \$39,500, the township average.

Board member and council-at-large candidate Angela Paserchia agreed with the majority of audience members that the budget placed to large a tax burden on residents in casting the lone negative vote.

Paserchia said she "could not vote for a budget that places 68 tax points on our residents."

Board member Barbara Cicaese, who had voted against the preliminary budget, was absent.

School officials continued to stress that only 18 out of the 68-point tax increase actually came from this year's budget increase, while 50 points came from other sources, mostly the nearly \$2 million in budget restorations by the state of money cut by the Township Council.

Losses in state aid and lower property assessments were also cited.

Most residents present at the public meeting criticized the recent teacher salary contract as being the major contributor to higher taxes.

School Superintendent Michael E. Lally quoted several statistics he said showed that the board "was forced to carefully examine all spending requests during the budget development process."

More than \$900,000 was eliminated from the initial budget requests, reducing about one tax

point from the total, Lally said, adding that the total budget increases 2.8 percent.

"Unfortunately, the tax increase (of 68 points) does not reflect the austerity with which this budget was developed," Lally said, pointing to the state restorations, and other "factors that cannot be controlled."

Lally also read a list of academic and athletic achievements by the district.

Most of the same residents who had spoken against the tentative budget last month expressed similar dissatisfaction at the public hearing.

Vincent Frantantoni told the board that school spending should reflect the same austerity forced on he and others in the community.

"Mr. Lally, you say 'I would like to do this.' Well I would have liked to buy a new truck this year, but I couldn't, so I bought a used one," Frantantoni said, "We would all like to do things, but we can't afford it."

Others expressed similar complaints, including school board candidate Frank Montagna, who called for personnel layoffs and accused the board of "driving people out of town."

Edith DeFeo said that as a senior resident on a fixed income, the tax increase was "heartbreaking." She called for a hiring freeze and asked that all tenants be compelled to pay property taxes.

After resident Henry Charzewski angrily told the board he did not want to pay for children's education, board member Ralph Mazzuca asked Charzewski

who paid for his education.

Charzewski shouted back that his mother had paid for him to attend Catholic schools.

Board President Gabe Nazzola said that the budget increase of \$820,562, an 18-point tax increase, can be almost completely attributed to an increase in students higher than any time since 1987, at a cost of more than \$7,000 per pupil.

That increase is without a penny spent toward anything else but our responsibility for a thorough and efficient education, Nazzola said, adding that the majority of the increase is the fault of the restoration of \$689,000 of the town council's attempted cuts of the last two defeated budgets.

A total of 29 tax points represent more than \$1.2 million first cut by the council and then restored to the school budget by the state Department of Higher Education.

Mayor Marina Perna has said that the Gov. Christine Todd Whitman has asked municipalities to cut spending, but has not given officials the power to make the reductions to school budgets stick.

Belleville Teachers Association President Jack Ayres has said the council refuses to acknowledge that school budgets are defeated by voters year after year because it is the only budget where residents can

express unhappiness about taxes.

Nazzola has said the budget is the tightest possible without removing programs and hurting students.

The state Board of Education has restored a total of \$639,835 cut by the council from the last two defeated school budgets. This money is uncollected and will add about 14.5 points to the tax levy.

The total doubles to more than \$1.2 million since it is also applied to the base of this year's budget, so a total of 29 tax points is added to the levy.

A state shortfall in aid of \$105,563 adds two tax points, while four points come from lower property assessments.

Figures released by the board show an estimate of 4,000 full-time students enrolled in the system.

Revenues from the local tax levy are up to \$22,685,974 from \$21,076,171 in 1993-94 while state revenues for foundation aid have dropped from \$4,183,548 last year to an anticipated total of \$3,531,544.

Federal revenues have dropped from \$861,853 to \$663,007 anticipated. Special revenues are down from \$982,134 to \$781,284.

Total current expense spending is \$29,701,765, up from \$28,837,555 last year.

Morning housefire injures resident

By Richard Dickon

A 79-year-old Dow Street resident was hospitalized after suffering burns and smoke inhalation in a morning fire.

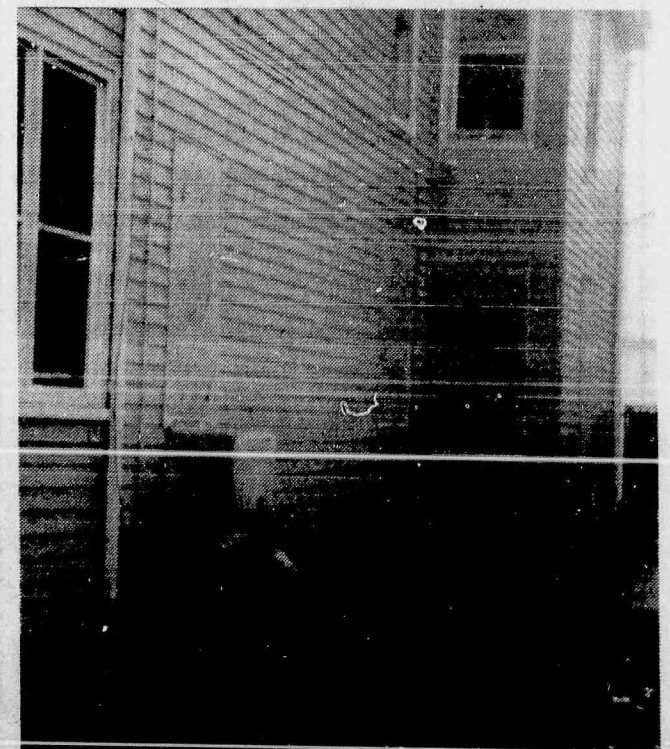
On March 27 at 7:21 a.m., a call reporting a house fire at 113 Dow St. was relayed through the 911 system to the Fire Department, according to Firefighter Scott Wentworth.

The first arriving units found heavy smoke throughout the house, with fire showing on the first floor. All residents were out except for

79-year-old Emanuel DeCosta, who had suffered burns on the hands and face and smoke inhalation.

The one-alarm fire was brought under control by 13 on-duty and six off-duty firefighters. The house suffered heavy fire damage on the first floor, and smoke damage on the second floor.

The residents of the house were relocated with family and friends, and the fire department's Arson Squad determined the cause of the fire to be accidental.



A 79-year-old resident suffered burns and smoke inhalation the morning of March 27 when fire struck the first floor of this house at 113 Dow St.

Annual festival will showcase park's cherry blossom trees

By Richard Dickon

The traditional blooming of the cherry blossom trees in Branch Brook Park this month will once again be showcased by the 1994 Cherry Blossom Festival.

From April 14 through April 24 the County of Essex and the Cherry Blossom Festival Committee will co-sponsor the festival.

Highlighting the schedule of events is the first Cherry Blossom Ball on Friday, April 15, sponsored by the Japanese and Belleville Chambers of Commerce.

The Annual Cherry Blossom 10K Run and Children's Fun Run, sponsored by PruCare, the Prudential Health Care Plan, will take place on Sunday, April 17.

Additional events include the Annual Japanese Cultural Festival on April 23, sponsored by MCI and associate sponsors Katsuko Suzuki along with the Corcoran Group.

Blossomfest '94 will happen on Sunday, April 24, sponsored by the Silver Lake Partnership District.

Japanese-related programs from now through May 29 will be sponsored by the Newark Museum. Lunchtime strolls through the cherry blossom display during the week of April 18-22, from 11:30 a.m. to 1 p.m. at the park's Visitor's Center will be conducted by the

Prudential.

Branch Brook Park's cherry blossom display is considered one of the finest and most impressive in the world, according to Joanna Noonan of the county executive's office.

"What was once reserved for the Emperor of Japan and his court may now be enjoyed by anyone who visits Branch Brook Park in the spring," she said, adding that cherry blossoms represent the intense beauty and transience of human life to the Japanese, taking on an almost sacramental quality.

The Branch Brook Park trees were donated in 1928 by Caroline Bamberger Fuld as a memorial to her husband, Felix.

The entire collection consists of more than 3,000 trees, representing 28 varieties, and is maintained by the county Department of Parks, Recreation and Cultural Affairs. The county encourages donations and thanks the New York Fukui Club for donating this year's trees.

On April 23, the Japanese Cultural Festival will be brimming with native culture throughout the park, from the Visitors Center along the Second River into Belleville. This pathway features some of the most spectacular blossom displays outside of Japan,

according to Noonan.

A variety of foods, including Japanese specialties, will be available for purchase, Noonan said, or visitors may bring their own lunches for picnicking under the blooming trees.

Performances under the Main Stage, located near the Visitors Center, include ancient Japanese court music performed in elaborate costumes, Noonan said.

Kabuki dancers with make-up and intricately embroidered kimonos will be on-hand, along with a Japanese Tea Ceremony, to be performed with precise tradition by the Japanese Cultural Society of New Jersey.

In addition, drummers in colorful costumes, and music concerts featuring the shakuhachi, koto and shamisen are also planned.

Others scheduled to participate in the festival include representatives from the Fukui Prefectural Government of Japan; Osaka Prefectural Government of Japan; The county Department of Parks, Recreation and Cultural Affairs; the City of Newark; the Township of Belleville and the MOA Foundation.

For more information on events, call the county Division of Cultural and Historic Affairs at 857-8530.

Student awarded third as state business leader

By Michele Farah
Belleville High School's chapter of the Future Business Leaders of America (FBLA) is proud to congratulate Melissa Cheng for earning third place in the FBLA State Leadership Conference at the Hyatt Hotel in Cherry Hill.



Melissa Cheng

The conference is designed to encourage FBLA members to be competent and aggressive business leaders. The workshop events were conducted by individual, team, and chapter members.

The competitions were judged by business people and educators reflecting on this year's theme, "A Vision for the Future."

Cheng represented Belleville High School in the word processing event for the North Central Region. Cheng competed against 31 students in various aspects of word processing and demonstrated a high level of proficiency.

High School plays 'Wizard of Oz'

The Stagecraft Club of Belleville High School will present its annual musical offering tonight, Friday and Saturday.

"The Wizard of Oz," a favorite of children and adults for generations, will be performed on the BHS stage.

The program begins at 7:30 p.m., and admission is \$5. Bring your whole family to this evening of lively entertainment.

Pisano campaign kicks off

A campaign breakfast, sponsored by the Committee to Elect Patricia Pisano for Council-at-Large, will be held at the Chandelier Restaurant, 340 Franklin Ave., at 9 a.m. on April 17. Donation is \$25 per person.

For ticket information, contact Chairperson Lynn at 751-2744 or Richard at 751-8827.

Belleville Senior News



By Joe Restaino

Josephine Molinaro, trip chairperson of the Senior Friday Club, announced that the trip for A.C. on April 11 will leave at 8 a.m. and that people should be there 15 minutes early. In the meantime, the Tuesday Seniors, under Mary Melchone, Helen Heisenreder and Regina Mucci, are busy selling tickets for their fish and chip party on April 9 at the Senior Center. Music will be by Tony Donato's Trio. Both clubs are planning for their Mother's Day celebration.

When making a shopping trip to the Nutley ShopRite it is amazing how many seniors you meet. It seems that some days it is almost possible to hold one of our meetings there. A half hour trip winds up lasting over an hour. It is a very pleasant and enjoyable shopping trip.

Nick Maunelle and Pat Collelo, trip chairpersons of the Belleville Old Guard, have requested that the balance due for the Fallsview trip be paid as soon as possible.

Get well wishes to Francis Salerno and Norma Amato.

What is a Grandmother?

Written by a nine-year old and taken from PTA Magazine. You'll smile as you read it, but you'll also sense the bond of love that closes up any possible "generation gap."

"A grandmother is a lady who has no children of her own, so she likes other people's little girls.

"A grandfather is a man grandmother. He goes for walks with boys, and they talk about fishing and tractors and things like that.

"Grandmas don't have to do anything except be there. They're old, so they shouldn't play hard or run. It is enough if they drive us to the market where the pretend-horse is and have lots of dimes ready.

"Usually they're fat, but not too fat to tie kids shoes. They wear glasses and they can take their teeth and gums off...

"They don't have to be smart - only answer questions like why dogs chase cats or how come God isn't married."

"Everybody should try to have one, especially if you don't have television, because grandmothers are the only grownups who have any time for children."

I think it is time that juveniles take responsibility for their acts. It seems that no matter what some of them do it is every one else's fault except the culprit. The public has a right to know if their neighbor is a chronic offender and what type of offenses they have committed. Maybe if their names were published it would deter them from committing another crime. What they are doing now is not working, so I think it's time to try something else. Time has run out on many of the old rules so let's change them and give the innocent public a break! If something is broke you fix it. The juvenile system is broke, so let's fix it!

A Russian man died and went to hell. As he walked around he kept saying, this is heaven, this is heaven. One person went to him and said, this is not heaven, it's hell. The Russian replied, you haven't been to Siberia.

Tid Bit: Do not judge your friend until you stand in his place.

Student practicing journalism in D.C.

Bao Tran of Belleville has been selected to attend the Washington Journalism Conference (WJC) to be held April 6 to 10, in Washington, D.C.

Bao, a junior at Belleville High School, will be one of 370 outstanding high school journalists attending the conference. The conference is sponsored by the Congressional Youth Leadership Council in cooperation with the National Press Club.

Drawing on the expertise of leaders in the fields of print, radio and television journalism, the Washington Journalism Conference will give Tran an insider's view of the industry. In more than 25 seminars with 40 speakers, students will hear from and work side-by-side with journalists from CNN, C-SPAN, Fox Broadcasting Company, Reuters, UPI, USA Today, Voice of America and The Washington Post.

The young journalists will also participate in hands-on workshops ranging from "A Crash Course in Responsible Journalism" to "Recycled News: Covering the Environment."

Tran will meet with key figures from government and the private sector. During a visit to Capitol Hill, students will participate in a number of activities at the National Press Club.

The activities include a panel discussion with top journalists, as well as an interview with Norma Cantu, Assistant Secretary for Civil Rights for the Department of Education.

The interview topic will be multi-cultural education.

The young journalists will also conduct their own mock press con-

ferences at various executive agencies, including the Environmental Protection Agency and The Department of Education.

The conference will culminate in the production of the student-written Washington Chronicle, published by The Washington Times.

"For five days, young journalists from high schools all across the country become part of the Washington press corps - covering stories, interesting newsmakers and having a real hands-on experience in the news industry. They ask the tough questions and get the answers they need to do a good reporting job," said Barbara Harris, Chairman, Youth Journalism Committee, National Press Club.

"What makes this program is the active involvement of member journalists of the National Press Club, who generously give their time to work with the young people," she added.

Local student wins college scholarship

Kristen Schmid, a senior at Belleville High School, has been notified by the President of Fairleigh Dickinson University that she has been awarded a Presidential Scholarship to its Teaneck campus.

This is the highest award that Fairleigh Dickinson can give to its incoming freshmen. It is a full four-year scholarship.

Kristen is the daughter of Judy and Ron Schmid of Belleville.

Bell Paese
Pizzeria
Salumeria/Deli
Italian Specialties
* CATERING *

- Fresh Mozzarella
- Brick Oven Breads
- Cold Cuts
- Fresh Salads • Pasta
- Homemade Sausage
- Fresh Meats & Chicken
- Imported & Domestic Cheese
- Espresso & Cappuccino

\$4.99
Pizza
Pick Up Only
Mon. - Tues. - Wed.
*Cannot be combined with other offers. Valid only with coupon. Expires 4/15/94

667-1094
196 Franklin Ave.
Nutley

Robert M. Gray, CPA
Income Tax Preparation
IRA/Pension Rollovers
- Senior Citizen Discount -
Pick-up & Delivery Service
667-7920

(201) 759-3968 Licensed Dealer
BULLET HOLE
Specializing
Guns - Ammo - Bait & Tackle
Police Equipment - Indoor Target Range
Collector Guns 78 Rutgers Street
Buy - Sell - Trade Belleville, N.J. 07109

GRAND OPENING
Belleville Fish Market
569 WASHINGTON AVENUE, BELLEVILLE, NJ
(201) 759-2279
WHOLESALE & RETAIL
• FRESH FISH & SEAFOOD
• LIVE SHELL FISH
• SPECIALS DAILY
• BEST PRICES ANYWHERE
TUESDAY THRU SATURDAY / 10:00 - 6:00

REGISTRATION CALL FOR MORE INFO!
Offering Grades K-8
Plus our special Pre-School Programs
Kindergarten Half-Day & Full-Day Programs
"And All Thy Children Shall Be Taught Of the Lord; And Great Shall Be The Peace Of Thy Children." ISA 54:13

NUTLEY ASSEMBLY CHRISTIAN SCHOOL

- 12 Secluded Acres
- Full Sized Gymnasium
- Supersized Classrooms
- After School Care
- Elective Programs (Drama & Spanish)
- Traditional Values with Modern Teaching Techniques
- State Funded Remedial Programs
- Sports Programs (Grades 5-9) Basketball, Baseball, Etc.

Nutley Assembly Christian School
280 Davey Street • Bloomfield, NJ 07003 • (201) 748-6277

Non-Discriminatory Policy: Nutley Assembly Christian School does not discriminate on the basis of race, national and ethnic origin in administration of its educational policies, admissions policies, scholarship and loan programs and athletic and other school administered programs

IS YOUR HOUSE LOADED WITH CASH?

NOW AVAILABLE! Our FIXED RATE HOME EQUITY LOAN
No fees. No closing costs. Borrow up to \$100,000!

FIXED RATE HOME EQUITY LOAN

7% APR to 60 months For Example: \$19.81 per mo. per \$1000	7.50% APR to 120 months For Example: \$10.88 per mo. per \$1000	8% APR to 180 months For Example: \$9.56 per mo. per \$1000
--	--	--

The interest on loans secured by the equity in your home may still be tax deductible. Now is the time to put on that addition, pay off your high rate second mortgage or reduce your credit card debt.

INTERESTED? FOR COMPLETE INFORMATION, CALL OR STOP BY.

SECURITY NATIONAL BANK AND TRUST COMPANY
OF NEW JERSEY

"Service with A Personal Touch"

Frederick J. McGrath, A.V.P. 30 Bank Street Newark, N.J. 201 643-5700	Janet Gilmore A.C. 431 Kingsland Street Nutley, N.J. 201 661-5121	Joanne M. Paulson, A.V.P. 213 Harrison Street Nutley, N.J. 201 661-5110
---	---	---

MEMBER FDIC

DIET BREAKTHROUGH

Overnight Amino Acid Plan Sweeping The Country

Researchers have located a specific hormone that can cause fat cells to be burned. Researchers have reported that this FAT BURNING HORMONE, the HUMAN GROWTH HORMONE, or HGH, is dormant in many overweight people, but can be activated by an amino acid combination of arginine and ornithine.

Consumers reported when given the Growth Hormone alone, they were able to eat their regular foods, yet still lose weight, in addition to the burning of fat cells, many credible researchers believe a HGH released may help improve muscle tone, convert cellulite to leaner muscle and produce a more youthful, shapely physique.

Available at pharmacies and health food stores under brand name of OVERNIGHT DIET, it is not a drug and requires no prescription. OVERNIGHT contains only natural ingredients found to be safe and effective.

AVAILABLE AT:

ROSSMORE PHARMACY
338 Washington Ave. Belleville
759-1956



"I WAS HOME FOR THE HOLIDAYS AND NOTICED MOM ISN'T DOING VERY WELL LIVING ALONE."

Comments like these are not unusual. Often, when adult children visit the home of a parent they discover that Dad isn't eating enough, or perhaps Mom is having problems keeping up the house.

Until recently these difficulties meant that it was time for a nursing home. But today there is a cost effective alternative.

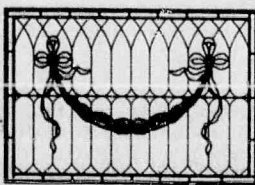
The Walpan Residence for Seniors combines a charming inn-like atmosphere with

support services such as home-cooked meals, house-keeping, transportation and keeping track of medications and doctors appointments.

At Walpan, residents enjoy companionship, security, privacy and independence and their families enjoy the peace of mind that comes from knowing someone is always there to help.

Write or call Nick Panza for a brochure.

744-4014



WALPAN RESIDENCE

176 Christopher Street
Montclair, NJ 07042

Recognized for Outstanding Achievement by the Essex County Dept. of Citizen Services

OUR OPINION

Schools should be less taxing on senior citizens

What happens when two factions have equally good arguments and there is little room for compromise? In the case of the Board of Education and the borough's 8,000 or so senior citizens, neither side's quality of life is getting better.

The school board and board of education officials are correct in fighting for the highest quality education possible for our children. The senior citizens trying desperately to remain in their homes on fixed incomes with ever-increasing property taxes are equally correct in crying foul at the \$266 tax increase headed their way.

Inevitably, the budget will be voted down, with senior citizens casting many of the negative ballots. The Township Council will then slash an amount they see as fair, and after several appeal processes come and go, the money will likely be restored, and the same problems will occur again.

Since no side can fairly be faulted for their stance, it must be the process itself that is at fault. The state Board of Education has the power to supersede the will of the voters who vote down a budget, forcing additional property taxes on residents.

Senior citizens and others complain about salaries, but the arbitration systems for many of the state unions favor higher salary awards. Perhaps most unfair is voting only on school budgets, not on municipal, county or federal budgets. Residents will continue to take their frustrations out on school children as long as this is the case.

School officials are right not to let poor economic conditions influence them to mortgage the future of Belleville's youth, the council is doing its elected duty by cutting from a defeated budget, and senior citizens have earned the right to live out their golden years in the place they call home.

So instead of pointing fingers at one another, let's compel state officials to change three of the ingredients of our discontent. Allow the school board to enact its budgets with the added weapon of fairer salary arbitration, let the council cut a fair amount from a defeated budget, and, most of all, let the voters vote on where *all* their taxes go.

Maybe then educating our children can be less of a battle and more of a victory -- for all of us.

Belleville pride blooming with new cherry blossoms

In the month of April, Belleville once again blooms with cherry blossoms at Branch Brook Park. A festival will celebrate the annually spectacular sight, including a Ball, walks and a myriad of Japanese cultural events.

For those who live here, this event should not ever be taken for granted. As the 'cherry blossom capital' we all should share in the joy and take time from whatever busy schedules we have to revel in the splendor of nature's wonders.

This has been a particularly brutal and unforgiving winter season in Belleville, as the endless time being put in by the Department of Public Works will attest. This spring, more than most, we need to remind ourselves of the amazing powers of renewal present in the earth.

So while the blossoms are blooming, take a little time to witness the rebirth of life in your own backyard. Cherry blossoms should provide a festival for everyone.

Quotables

It is not best that we should all think alike; it is difference of opinion which makes horse races. -- Mark Twain

The farther backward you can look, the farther forward you are likely to see. -- Winston Churchill

Each morning puts a man on trial and each evening passes judgment. -- Roy L. Smith

Forty is the old age of youth; fifty the youth of old age. -- Victor Hugo

If you don't want to work, you have to work to earn enough money so that you won't have to work. -- Ogden Nash

When a man is wrapped up in himself, he makes a pretty small package. -- John Ruskin

Diplomat: A person who can be disarming even though his country isn't. -- Sidney Brown

Bores bore each other too; but it never seems to teach them anything. -- Don Marquis

A man is rich in proportion to the things he can afford to let alone. -- Henry David Thoreau

YOUR OPINION

Woman's Club says 'thanks'

To the editor:

On behalf of the members of the Woman's Club of Belleville, may I extend a hearty thank you to all of those residents and friends who supported our fundraiser and program booklet for the "Unique Boutique." Your generosity will once again enable us to support the many charitable endeavors that we have in the past.

This includes a scholarship for a student at Belleville High School, our poetry contest, library work, and clubhouse renovations. Also we are able to give a sizable donation to the charities sponsored by the N.J. State Federation of Women's Clubs.

This includes scholarships to students at Douglass College, which was founded by the Federation, UNICEF, and a pediatrics trauma center at United Children's Hospital.

A very special thanks to all of the women and men who came out on that snowy evening for fun and shopping. Your participation was greatly appreciated. As always we will strive to help make the Township of Belleville a better place for everyone.

Barbara Spillane
President

DARE ski trip successful

To the editor:

As teachers in the Belleville school system, we would like to express our gratitude to the DARE officers for another wonderful trip planned for the sixth graders of this town. We chaperoned the trip which occurred on the evening of February 18.

The DARE officers showed our pupils a positive way to have fun and be safe without taking drugs. The students were instructed in skiing techniques for both beginners and the more experienced in this sport. This activity enhanced their awareness of appropriate outside activities in which they may participate.

This eventful evening was very exciting for the many students from all elementary schools and for us, the teachers, who were able to share in this great experience.

Debra McDonagh
Nanette Rotonda
Isobel Villano
Members of School Three Faculty

Request to keep volunteer service

To the Editor,

I agree with Timothy Daudelin's letter asking to keep our ambulance service the way it is.

A volunteer organization, funded by private donations and fundraising, would be met with a lot of approval from a lot of families, and also senior citizens, who depend on medical services.

One hundred and eighty dollars is a lot of money for any family.

Sincerely,
Micheline Della Luna

Pisano enters race

To the editor:

I, Patricia Pisano, have handed in petitions for nomination for Council-at-Large. My concerns, ideas and commitment to Belleville are as strong and heartfelt as ever before. For those reasons and many more, I have decided to run for Council. I am unable to do this without your help.

I feel being a homeowner, as well as a taxpayer, helps me to keep in touch with the reality of today's problems in Belleville. This is why I will not stand up in a room or write down on paper what you and I live with everyday. I do not want to dwell on the negative conditions of our community. I will commit this energy towards solving the problems.

You have three votes, I would like to ask you to consider me for one of them. Together, we can start re-connecting Belleville.

Patricia Pisano
Candidate for Council-at-Large

WE WELCOME LETTERS

... of interest to our local area. They should be short and to the point, they must be signed for attribution and contain the address and telephone number for verification.



Of All Things

By Frank Orechio
A feature of the Nutley Sun,
Bloomfield Life and
Belleville Times

• **MR. WICK SIMMONS**, President of Prudential Securities, appears on the television screen, entitles his remarks, "Straight Talk." I have some straight talk for you, Mr. Simmons.

Your comment about the great profitability of your company at a time when you are asking investors in your securities to take 55 cents on the dollar - that to me is funny talk - it certainly isn't straight talk.

• **ESSEX G.O.P. CHAIRMAN JOHN RENNA** has selected Freeholder Jim Treffinger to be his County Executive candidate. A better choice would be Bloomfield Assemblywoman Marion Crecco. A qualified candidate, Treffinger, lacks the ability to attract urban and ethnic voters.

Marion Crecco enjoys the personal support of Governor Christie Whitman - no slight factor when selecting Republican candidates. She bridges the great divide that exists between the

urban and suburban voter.

At the very least, Renna should declare an Open Primary and encourage a multiple candidate choice for County Executive, Sheriff and Registrar. His on-again-off-again romance with Newark Councilman Henry Martinez has led Renna to take a cheap shot at Martinez. Sure they talked - and yes - at one point it appeared Martinez was Renna's candidate for Sheriff. Now Renna feels jilted. Renna has been in politics long enough to know that changing conditions some time lead to changing decisions. And so it is that Councilman Martinez joins Democrat leader Tom Giblin - the Democrat County Executive candidate as his teammate. Rounding out the Democrat ticket is Registrar Larrie Stalks, a veteran officeholder with an exemplary record.

Challenging Giblin for the Democrat County Executive nomination is East Orange's popular Mayor Cardell Cooper.

When Giblin didn't return Sheriff Armando Fontoura's five telephone calls, the Sheriff got the message rightly or wrongly, that Giblin was shopping around for a Sheriff candidate with a broader ethnic base. As a result, Fontoura accepted Cooper's invitation to be his running mate.

When a party replaces an incumbent with an excellent record, there must be an overriding consideration. Sheriff Fontoura is a professional law enforcement official enjoying a national reputation, even at one point complimented by President Clinton.

The only complaint about Fontoura is that he doesn't make decisions based upon the perceived political needs of the Democrat Party. This is reason enough why Fontoura deserves re-election.



Sheriff Armando Fontoura

• **AN ambivalent President Clinton** vows to get tough on crime in America and at the same time urges Singapore to be lenient toward an admitted criminal.

Michael Fay is an 18 year old American citizen living in Singapore. He was arrested for repeatedly vandalizing cars and tearing down street signs - and he pleaded guilty. His punishment includes six blows to his buttocks from a cane.

Barbaric as the punishment is, that is the law in Singapore. And all visitors know it.

By his action, Clinton asks that we avoid responsibility for our actions rather than accept it.

• **INTEREST** rate increases are jolting the overpriced stock market. Over the past couple days the market has lost 10 percent of its value. I think most stocks are overpriced - and the market may experience another "correction" of 10-15 percent before it levels off - the Clinton proclaimed national prosperity notwithstanding.



Marion Crecco

Belleville Times

Serving Belleville Since 1909

(USPS 049-220)

Publisher: Frank Orechio

**Published Every Thursday
At 155A Washington Ave.
Belleville, N.J. 07109**

Second-Class Postage Paid
At Newark, N.J.
Postmaster: Send address changes to:
The Belleville Times, 155A Washington Ave.,
Belleville, NJ 07109

**Social Editor: Helen Maguire
Sports Editor: Michael Lambert
Advertising: Rene' Theodore
Art Director: Diane Lombardy
All departments call:
759-3200**

Fax: 667-3904

**Annual Subscription: \$16.00
Senior Citizens: \$ 8.00**

Life in Silver Lake

By Marie Strumolo Burke

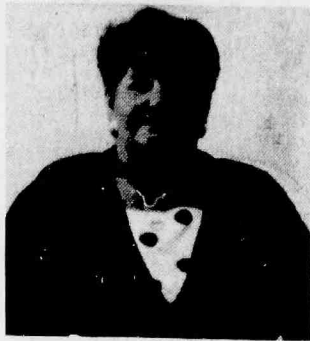
As my first assignment as a columnist for the Belleville Times, I would like to say thank you, thank you, thank you, to Frank Orechio, for affording me the opportunity to write about one of my favorite subjects ... Silver Lake.

I guess the right way to start off with is a little history of THE LAKE ... so here it is!

For more than 150 years, there really was a lake in the Silver Lake section of Belleville. It was a long narrow body of water, almost a half-mile long and some 300-feet deep. In colonial days it was known as Sunfish Pond, a name that appears on old maps of the area, but in later years it was known officially as Silver Lake.

The Lake was created by a dam built about 1730 by Jasper Crane, believed to be the grandson of one of Newark's founders, and Joshua Miller, who built a woodturning mill powered by the impounded water running over a 20-foot over-shot water wheel that generated more than 25 horsepower.

The dam, located at Heller Parkway and North Sixth Street, backed up the water of three brooks southward almost to Bloomfield. From the lake the stream ran into the Second River. The old mill operated for more than a century, accounts differ as to exactly how long, first as a woodturning mill and later as a grist mill.



Maire Strumolo Burke

It was during the last three or four decades of existence that the lake acquired its reputation as a beauty spot and recreational area. It was a favorite spot for picnickers in the summertime and ice skaters in the winter.

A nearby farmer had a lucrative rowboat and canoe rental service on the western shore. The Newark Art Club met at the lake, as it was a favorite place for sketching. Each winter, ice was harvested from the lake, stored in three icehouses along the eastern shore and eventually shipped in canal along the nearby Morris Canal to markets in Newark and New York.

The end of the lake and the end of an era in Silver Lake's history, came on the night of July 30, 1889. A violent storm caused a flash flood that wiped out the dam and drained the lake. The old mill building was seriously undermined and gradually crumbled away. Shortly

afterwards, fire destroyed the ice-houses.

Today there is nothing but Lake Street and the name Silver Lake to indicate that there ever was a body of water there. The brooks that once fed the lake have disappeared into underground culverts. Soon after, Thomas Edison opened a factory on Belmont Avenue and homes and businesses began to spring up. The area became settled with predominantly Italian families, and to this day, a large number of the residents are of Italian descent.

The Lake is a unique place. The residents sit in front of their homes at night or on the weekends and very rarely in their back yards. Almost everyone knows everyone. If you need a loaf of Italian bread, cold cuts, Italian pastry, all you need do is walk a short distance to the many stores in the Lake. It's a great place to live...work...raise your family...and retire.

In future columns, I will feed you more information on Silver Lake.

One of my dearest friends, Rita and Lebro Charles of Silver Lake are celebrating their 30th wedding anniversary. Happy anniversary to you.

Remember, we love Silver Lake.

Tip of the week: The Belmont Tavern, Bloomfield Avenue, Silver Lake. Noted for its marvelous Chicken Savoy.

Council seat remains open

By Richard Dickon

The Township Mayor and Council delayed approval of a salary for former councilman Charles Cerami as superintendent of the Department of Public Works at the April 4 work session, while also failing to name a replacement to fill Cerami's council slot until the November elections.

The council had advertised a possible special public meeting to name a council replacement or enact a salary ordinance to set Cerami's pay.

Township Manager Stephen Cuccio's appointment of former councilman Charles Cerami as superintendent of the Department of Public Works has sparked heated debate from some residents, while others have praised his first days of work.

The salary for Cerami is to fall somewhere in the \$45,000 to \$70,000 range, but the mayor and council tabled the ordinance for further review.

The council had interviewed three candidates to fill the vacancy until a November election, including former school board member Richard Yanuzzi, current Planning Board Vice Chairman Al Napi and Nick Cerami, Charles Cerami's brother.

Cuccio has said he decided to give the slot to Cerami because of his expertise in the area as a contractor, and that Cerami will save money by allocating overtime more efficiently.

The township had already paid out more than \$120,000 in overtime and salt purchases prior to the later March snows, he said.

Cerami has been unavailable for comment.

The Cerami DPW hiring essentially separates three salaried positions: DPW superintendent, DPW director and township engineer. A director is still to be hired, at a salary of between \$55,000 and \$70,000, according to Cuccio.

Tom Herits had been acting in all three capacities.



Easter lawn party - Jeannie and Micheal Borgo of 83 Chestnut Ave. treated their three children, Courtney, seven, Brittney, 5 and Ryan, four months, to an Easter Bunny homecoming with this bright display of holiday decorations.

Frank & Gregg Danieli

are pleased to announce
the opening of

Danieli's

Dining On The Plaza

~ Open For lunch & Dinner ~

**23 Watchung Plaza
Montclair • 744-2090**

Mon. - Thurs. 11-10 • Fri. 11-11
Sat. 12-11 • Sun. 3-9

Reservations & Major Credit Cards Accepted

Stocks Go Up and Down.

Get The Best Rates From The Best Bank.

For IRA/Keogh Plans Too!

	36 Month CD	60 Month CD
TRUST COMPANY	4.60%	5.23%
	Annual Percentage Yield	Annual Percentage Yield

OTHER BANKS	36 Month CD	60 Month CD
CoreStates	3.50 % APY	4.00 % APY
First Fidelity	3.70	4.00
Midlantic	3.70	4.75
Chemical, NJ	3.55	3.75
Constellation	3.70	4.25
NatWest, NJ	3.98	4.65
Hudson United	3.75	4.37

To lock in these high rates, check off the appropriate box for CD or IRA/Keogh CD and mail in the coupon.

Please open a _____ month CD	Drivers Lic No. & State _____
Enclosed is my check for \$ _____	Social Security Number _____ Birthdate _____
For CD's: <input type="checkbox"/>	Day Phone _____ Home Phone _____
For IRA/Keogh CD's: <input type="checkbox"/> 1994 <input type="checkbox"/> 1993 Contribution	Signature _____
Name _____	Mall To: The Trust Company
Address _____	35 Journal Square
City _____ State _____ Zip Code _____	Jersey City, NJ 07306
	Attn: Marketing Dept.

Accountholder agrees that this account will be subject to the Rules and Regulations Governing Accounts of The Trust Company as these rules are now in effect or may hereafter be amended by The Trust Company and is subject to all prevailing laws of the United States and State of NJ. Under Penalties of perjury, Accountholder certifies that (1) the above is my correct taxpayer identification number and (2) that Accountholder is ☐ or is not ☐ subject to withholding under the provisions of Section 3406 (a) (1) (c) of the Internal Revenue Code.

1-800-223-BANK (2265) for CD's or
1-800-IRA-PROS (472-7767) for IRA/Keoghs



TRUSTCOMPANY BANK
THE BANK WITH HEART SINCE 1896

43 Branches in Bergen, Essex, Hudson, Middlesex, Monmouth, Morris, Passaic and Somerset Counties
Assets \$2.5 Billion • Executive Offices: 35 Journal Square, Jersey City, NJ • Member FDIC

THE TRUST COMPANY OF NEW JERSEY

Interest compounded continuously. APY's quoted as of publication date and are subject to change without notice. There may be substantial penalties for early withdrawals. Minimum deposit \$1,000. All comparative APY's as of 3/29/94. Source US Datastron.

Belleville: Main & Joralemon (Grand Union Shop Ctr) 751-1001
Nutley: Franklin & Vreeland Ave. 661-0300

THERE'S NO PET LIKE YOURS. AND THERE'S NO STORE LIKE OURS.

We Have everything in stock from books, crates, shampoos
& of course pet foods. Always at the best prices.

The right advice is always free.

**SALE THURSDAY 4/7
TO SATURDAY 4/9**

Sci. Diet K9 MAINT. SOLD - \$23
SCI. DIET FELINE MAINT. 25 lb. - \$19

JAY - TEE'S PET SPECIALTIES

Visit Our 5,000 Sq. Ft. Store at
161 Glenridge Ave., Montclair
201-746-4799

~ Serving The Community Since 1976 ~

Hours: Mon. to Fri. 9 am to 6:30 pm Thurs. to 7 pm Sat. 9 am to 6 pm

We accept All Major Credit Cards.

Calendar of Events

In the Trustees Gallery: The artwork of Susan Shadle, entitled "Awakening In April," will be on exhibit at the Belleville Public Library, 221 Washington Avenue.

In the Display Case: "Wildlife Woodcarvings," by Michael Accunzo of Belleville and "Treasures From Around the World," by Eileen Cherry of Belleville, will be on exhibit at the Belleville Public Library and Information Center, 221 Washington Ave.

April 7 - "Photographing People - How to Make Your People Pictures More Natural," will be discussed in a video at 10:30 a.m. at the Belleville Public Library and Information Center.

The Thursday Film Class Series will feature the film classic "Random Harvest" at 1 p.m. at the Belleville Public Library and Information Center.

April 8 - The film "Camelot" will be shown at 12:30 p.m. at the Belleville Public Library and Information Center, as part of the Friday Musical Film Class Series.

BOOK MARKS

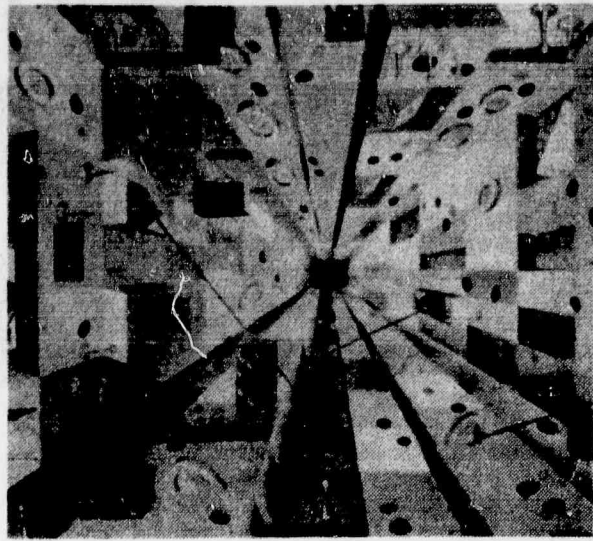
April 9 - An Italian Language Course, taught by Anthony Cece, will take place at 10 a.m. at the Belleville Public Library and Information Center.

April 12 - "How to Handle Stress" will be discussed by Mary Springer at 10:30 a.m. at the Belleville Public Library and Information Center.

Realism: Leoncavallo and Mascagni will be discussed by Frank De Lisi, as part of the Opera Film Classic Series lectures on famous opera composers.

"How to Recognize and Deal Effectively with Stress," will be discussed by Drs. Joseph and Karen Carnelli at 7 p.m. at the Belleville Public Library and Information Center. Call 991-0800 to register.

April 13 - "One of Ours" by Willa Cather will be the subject of a lecture and discussion by Dr. Henry Christian, Professor of English, Rutgers University, as part of the humanities discussion series at 1 p.m. Call 450-3434 to register.



Pictured is one of Susan Shadle's paintings in her exhibition entitled "Awakening in April," currently on display in April in the Trustees Gallery. The gallery is open to the public, except when a library program is being held in the meeting room and gallery; therefore call ahead at 450-3434, if you are coming from a distance to view the exhibit.

2 Dinners for the price of one / with this coupon

Every Monday Nite

ALL YOU CAN EAT

BUFFET \$9.95
PER PERSON



Bella Casa Caterers Inc

2 ACME STREET, BELLEVILLE, NEW JERSEY 07109

(201) 450-0602 FAX: 450-4084

Situated Behind Hoffmann: - La Roche & Clara Maass

450-0602

Reservations Suggested - All Major Credit Cards Accepted
Exp. 4/25/94



RUSSO FAMILY CHIROPRACTIC
LEONARD M. RUSSO, D.C.

Personal Injury • Workers Comp. • Sports Injuries
Family Health Care

EXCEPTING
MEDICARE & MEDICAID
258 WASHINGTON AVENUE, BELLEVILLE
450-8471

TRUST H&R BLOCK

Income taxes are our only business.

We have more experienced tax preparers than anyone else in the business.

It's Why America Returns.

H&R BLOCK

NUTLEY (Diagonally Across from CVS) 155 Franklin Ave. • 235-1000	BELLEVILLE (Between Belleville Ave. & Williams) 125 Washington Ave. • 751-3836
BLOOMFIELD (Off Bloomfield Ave.) 299 Glenwood Ave. • 743-0898	MONTCLAIR (Across from CVS) 513 Bloomfield Ave. • 744-5483

OPEN EVERY EVENING
UNTIL 9 PM

Our Rates Are Great. But You Can Make Them Better.

Our Step-Up CD Gives You
A One Time Option
To Raise Your Rate When
Interest Rates Go Up.

3 Year CD

4.71%

Annual Percentage Yield

5 1/2 Year CD

5.60%

Annual Percentage Yield

Open a 3 year or 5 1/2 year Step-Up CD with a \$500 minimum balance and an unexpected option opens up. You'll not only lock in a great rate and get the security of FDIC insured funds (up to \$100,000), you'll also get a 1 time option to raise your interest rate during the term of your CD. That way you'll never feel down if the market rate goes up.

1-800-522-4100

Valley National Bank

Member Federal Reserve System

THE BANK THAT WORKS.™

Member FDIC

The APYs listed above are effective as of 4/6/94. A penalty may be imposed for early withdrawal. This limited time offer applies to new accounts, is subject to change, and may be discontinued without prior notice. Valley National Bank cannot be held responsible for typographical errors; prevailing rates will apply.

BUY RECYCLED.



AND SAVE.

Thanks to you, all sorts of everyday products are being made from recycled materials. But to keep recycling working to help protect the Earth, you need to buy those products. To receive a free brochure, call 1-800-CALL-EDF.



A Public Service of
This Publication



ENVIRONMENTAL
DEFENSE
FUND

HAIR'S OUR PLACE

Spring Prom Special



Full Set of Acrylics

(w/ complimentary nail art)

\$35.00

Receive 25% Off For Fill
Ins On Next Two Appts.

MAKE AN APPOINTMENT FOR:
Manicure & Pedicure
\$25.00

Receive a \$5.00 Gift
Certificate Towards
Any Hair Service

CALL FOR APPOINTMENT

NAIL'S - 743-0224
HAIR - 743-7488

Suzanne
or Roe

~ OPEN 7 DAYS A WEEK ~

17 James St. Bloomfield, NJ

BOOK MARKS

Book Bingo at Shafter

At the Shafter Branch Library, 30 Magnolia Street, a book bingo for children will be held on April 11, from 3:15-3:45 p.m. Playing book bingo is a way to stimulate reading interests in preparation for National Library Week, April 18-23. Prizes will be awarded to bingo winners.

'A Time for Miracles'

On April 11, at 1 p.m., at the Belleville Public Library and Information Center, 221 Washington Avenue, the film "A Time for Miracles," with Kate Mulgrew, John Forsythe and Lorne Greene will be shown. This film tells the story of Elizabeth Bayley Seton, who was canonized as America's first native-born Saint. Born in New York City, Elizabeth seemed destined for a tranquil life, but after a series of tragedies, including the death of her husband and the loss of the family fortune, Elizabeth turned to the Catholic faith and founded organizations that championed education for all faiths.

Lectures focus on Stress

The Belleville Public Library and Information Center will be providing three lectures in April to help people cope with stress. "How To Handle the Stress We All Have," will be discussed by Mary Springer on April 12 and 14, at 10:30 a.m.

An evening Stress Management Workshop will be conducted by Drs. Joseph and Karen Carnelli on April 12, at 7 p.m. Call 991-0800 to register for the evening workshop. These workshops will attempt to teach you how to recognize and how to deal effectively with physical, chemical, and emotional stress.

New science books at library

As a result of a science grant from the State of New Jersey, Department of Education, many new science materials have been added to the Belleville Public Library and Information Center. Among the references added are: "Mayo Clinic Heart Book; The Ultimate Guide to Heart and Health," R 616.1; "The Cancer Dictionary," R 616.994, "The Cambridge Encyclopedia of Human Evolution," R 573.2, "Electronics Repair Manual," R 621.38, and the "International Dictionary of Medicine and Biology," R 610.3.

Local Marine honored

Marine Second Lt. Richard H. Wells of 21 Clinton St. recently received two Letters of Appreciation while assigned in Japan.

Wells, the son of Henry and Lynn S. Wells, was cited for superior performance of duty while assigned with Marine Wing Headquarters Squadron One, First Marine Aircraft Wing, Okinawa, Japan.

Officials said Wells has consistently performed his demanding duties in an exemplary and highly professional manner.

Wells joined the Marine Corps in April 1992. Wells is a graduate of the New Jersey Institute of Technology with a Bachelor of Science degree.

Club going to see 'Guys and Dolls'

"Guys and Dolls," the popular Broadway play, is now available to Belleville residents.

The Woman's Club of Belleville is sponsoring a theater party to New York City for the play on April 14th. The trip includes a bus to the city for the evening performance.

Tickets for the musical are \$55. Reservations may be made by calling Loretta Fulda at 751-4553 or Barbara Spillane at 759-0219. Only a limited number of tickets are available.

House Washing by POWER BRITE

We Do:

Hot - Cold - & Steam Power Washing

Houses • Buildings
Decks • Patios

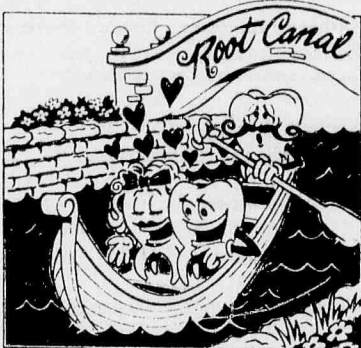
Painted & Unpainted Wood, Aluminum, Vinyl, Cement, Brick, Stucco

Gutters Cleaned & Flushed

TOP QUALITY
* FREE ESTIMATES *

(201) 338-1554

Tender, Loving Care For Teeth



Complete Family & Cosmetic Dentistry

Franklin Dental

Alan Saczawa, D.M.D.

"Serving The Community For 18 Years"

WE WELCOME
NEW PATIENTS
WE ♥ PEOPLE
OF ALL AGES

591 Franklin Ave.
(near the Trestle)

Nutley • N.J.

235-0336

DAYS • EVENINGS
SATURDAYS
24 Hr.
Emergency Service

Member
Delta Dental

Senior Citizen
Discount



FREE! BORROWING & INVESTMENT SEMINAR

Mortgage Lending
Home Equity Loans
Retirement Planning
Estate Planning & Elder Care

First DeWitt Savings Bank invites you to spend an insightful evening with our experts in the field of alternative investments, retirement planning and consumer and mortgage lending. Join us on Tuesday, April 19, 1994 at 7 p.m. at our branch office at 1072 Broad Street, Bloomfield, NJ 07003. Complimentary refreshments will be served. Limited seating is available, so please call (201) 575-5800, ext. 305 for reservations.

FIRST DeWITT SAVINGS BANK
A First State Financial Services Company

1072 Broad Street
Bloomfield, NJ 07003
(201) 575-5800, ext.305

FDIC Insured

Equal Housing Lender
Equal Opportunity Lender

WINS

EVERYBODY

At LIBERTY LINCOLN MERCURY

You get the idea. This is it. Your best chance to save thousands on Mercury Sable with special lease terms or huge option package savings. Or drive away in the v8 powered Grand Marquis for less. Complete with standard dual airbags. But you better hurry, this won't last long.

BRAND NEW '94 MERCURY COUGAR

CFC-FREE AIR CONDITIONING SYSTEM
DUAL AIRBAGS

SAVE \$2266

V6 eng., auto., P/S, P/B, CFC-FREE AIR, rr. defr., du. ltr. group, dual illum. visor mirrs, floor mats, illum. entry, ltr. wrapped steering whl., cast alum. whls., 6-way P/dr. seat w/ lumbar support, P/W, P/L, tilt, cruise, cass., DUAL AIRBAGS. Vin #RH609310. Stk #46018. MSRP: \$18,265. Incl. \$400 Coll. Grad Rebate (if qual.)

\$15,999

FANTASTIC LOANER CAR PROGRAM AVAILABLE ON ALL '93 & '94 LEASE & BUY VEHICLES
Ask For Details

BRAND NEW '94 GRAND MARQUIS

CFC-FREE AIR CONDITIONING SYSTEM
DUAL AIRBAGS

SAVE \$3106

Mercury, 4.6L V8 eng., auto. trans., P/S, P/B, CFC-FREE AIR, P/W, P/L, P/dr. seat, cass., fr. & rr. fl. mats, rr. defr., cruise, tilt, P/side mirrs, illum. visor mirrs, DUAL AIRBAGS & Much More! Vin #RX631463. Stk #41014. MSRP: \$21,605. Incl. \$400 Coll. Grad Rebate (if qual.)

\$18,499

BRAND NEW 1994 MERCURY TOPAZ GS



\$11,499

4 cylinder engine
A/T, P/steering/brakes
AIR CONDITIONING
Comfort/Conv. group
Fr. & center armrest
Decklid/fuel dr. rlse.
Rear defrost

P/windows/locks
AM/FM stereo cassette
Cruise/tilt wheel
MSRP: \$14,480
Incl. \$400 Coll. Grad (if qual.)
Incl. \$300 Fact. Rebate
Stk #7008 Vin #RK627258

75 VEHICLE GIANT INDOOR SHOWROOM

1993 LINCOLN MARK VIII

ALARM SYSTEM
DUAL AIRBAGS
ABS

SAVE \$9351

8 cyl. eng., auto. trans., P/S, P/B, AIR COND., cass., rr. defr., auto-glide seat, P/W, P/L, tint, alarm, DUAL AIRBAGS, ABS, elec. trac-assist auto. dimming rear view mirror, JBL audio system. 6460 demo mi. Vin #PY670881. Stk #32013. Orig. MSRP: \$38,250.

\$28,899

SAVE THOUSANDS
NEW '93 MARK VIII'S TRACERS GRAND MARQUIS

BRAND NEW '94 LINCOLN TOWN CAR

CFC-FREE AIR CONDITIONING SYSTEM
DUAL AIRBAGS
ANTI-LOCK BRAKES

SAVE \$5376

V8 eng., auto. trans., P/S, P/B, CFC-FREE AIR, DUAL AIRBAGS, ABS, P/W, P/L, P/dr. seat, geo. cast alum. whls., keyless entry, cruise, tilt, rr. defr., cass., dual P/mirrs, illum. visor mirrs. Vin #RY685964. Stk #44048. MSRP: \$35,375. Incl. \$1500 Rebate.

\$29,999

Prices include all costs to be paid by the consumer except for licensing, registration and taxes.

"Please Don't Leave Home Without Us."

WINNER OF GOLD & SILVER DISTINGUISHED SERVICE AWARDS

LIBERTY

LINCOLN-MERCURY

790 ROUTE 3, CLIFTON

(201) 473-7800

OPPOSITE HOFFMANN & ROCHÉ

OPEN DAILY 10:00 A.M. SATURDAY 11:00 A.M.

Events in the area

Support groups...

Narcotics Anonymous meeting list: **BELLEVILLE:** Monday, 8 p.m., Fewsmith Presbyterian Church, Union Ave. and Little St. Open/book/discussion meeting; Tuesday, 8 p.m., Clara Maass Medical Center, 1 Franklin Ave., Branch Brook Room, Education Center. Men's meeting. Open/discussion; Thursday, 8 p.m., Fewsmith Presbyterian Church, Union Ave. and Little St. Open/topic/discussion meeting; Friday, 8 p.m., St. Peter's Church, rear basement, Williams St. Open/discussion. **NUTLEY:** Monday, 7:30 p.m., St. Paul's Congregational Church, Franklin Ave. and St. Paul's Place. Closed/speaker/discussion meeting. Open to addicts and those who think they have a problem with drugs; Tuesday, 7:30 p.m., Grace Episcopal Church, 200 Highfield Lane. Women's meeting. Topic meeting/open discussion; Wednesday, 8 p.m., Grace Episcopal Church. Closed/speaker/discussion. Open to addicts and those who think they have a problem with drugs.

Gamblers Anonymous, 8 p.m. Mondays, 8:30 p.m. Fridays, St. Paul's Congregational Church, Franklin Ave. and St. Paul's Place, Nutley, 2nd floor. Meetings open to anyone with a gambling problem or those who think they might have a problem. Topic/therapy.

Gamanon, to offer hope and understanding to loved ones of compulsive gamblers, 8 p.m. Mondays, 8:30 p.m. Fridays, St. Paul's Congregational Church, Franklin Ave. and St. Paul's Place, Nutley.

Alcoholics Anonymous, 7:30 p.m. Wednesdays, 2nd floor, St. Paul's Congregational Church, Franklin Ave. and St. Paul's Place, Nutley.

Lupus Foundation of New Jersey, Essex County Branch, 7:30 p.m. April 12, Mountainside Hospital School of Nursing, Montclair. Park in small lot. Open forum. For more information, call 791-7868.

New Jersey Chapter of NAAFA (National Association to Advance Fat Acceptance), social events, human rights information, monthly newsletter. For more information, write P.O. Box 110203, Nutley, 07110 or call 667-2957.

Overeaters Anonymous, self-help group for compulsive overeaters or people with eating disorders, Tuesdays, Presbyterian Church on the Green Parish House, Broad St., Bloomfield (7:30 to 9 p.m.); Wednesdays, Christ Church, Park and Bloomfield avenues (opposite Grand Union), Bloomfield (8 p.m.). For more information, call 746-4658; Thursdays, Grace Episcopal Church, 200 Highfield Lane, Nutley (7 p.m.)

Living With Cancer, for cancer patients and their families, 7 to 8:30 p.m. second Wednesdays, waiting area of Radiation Oncology Dept., Mountainside Hospital, Montclair. 429-6905 or 429-6128.

Recovery Inc., a community mental health self-help group for persons who suffer from nervous symptoms and fears, 7:30 p.m. Wednesdays, Parks Dept., 44 Park Ave., Nutley. For free literature, call (908) 766-7466.

Make Today Count, a support group for patients and families dealing with cancer and other life-threatening illnesses, 10:30 to 11:30 a.m. second Tuesdays, first floor of Continuing Care Center building, Clara Maass Medical Center, Belleville. For more information, call 450-2210.

Parkinson Support Group, 10 a.m. third Saturdays, private dining room, Mountainside Hospital, Montclair. Exercise and speech therapy groups meet weekly as well as monthly meetings for caregivers. Call 256-1011 for information.

Arthritis Support Group, 7 p.m. second Tuesdays, Montclair Community Hospital, 120 Harrison Ave. Note new location. Friends and families welcome. (908) 283-4300. Mar. 8: How to Prepare a Living Will. Jean Kalembe, RN, speaker.

PFLAG, Northern New Jersey Parents, Families and Friends of Lesbians and Gays, 2:30 p.m. second Sundays, First Trinity and Presbyterian

Church, corner of Irvington and South Orange avenues, South Orange. Newcomers: 1:30 p.m. Write: P.O. Box 244, Belleville 07109-0244 or call 267-8414.

For singles only...

Singles 60 Plus for all single Bloomfield residents over 60, 12:30 p.m. second and fourth Mondays, Bloomfield Civic Center, 84 Broad St. For information, call 743-7014 or 680-4017.

Meetings...

Belleville AARP Chapter 2051, 1 p.m. April 7, Fewsmith Memorial Presbyterian Church, 444 Union Ave.

Rock Retirees, 1 p.m. April 9. Program: Elder Hostel video, Trudy Traenkle.

Stuart E. Edgar VFW Ladies Auxiliary, 8 p.m. April 12, post home, 271 Washington Ave., Nutley. Nomination and election of officers. April 8: District 4 auxiliary, 8 p.m. post home.

Court Gratia 751, Catholic Daughters of America, St. Mary's School Hall, Msgr. Owens Place, Nutley. April 18: spring social at 8 p.m.

Nutley AARP Chapter, 1 p.m. April 14, Parks and Recreation building, 44 Park Ave. Pizza party for those with paid reservations. Installation of officers. Luncheon, Thursday, May 12 at Fairmont. Reservations with payment at April 14 meeting. To join chapter, bring National membership card and \$2.

Women's Auxiliary, Lions Club of Nutley, seeking new members, 7 p.m. first Thursday, Meyer's Cafe, Nutley. For more information, call Betty Lazur at 667-9127 or Louise Beck at 661-2906.

Belleville Kiwanis Club, dinner meetings, 6:30 p.m. Thursdays, Bella Casa Caterers, 2 Acme St. For membership information, call Nino Bucciarelli at 751-2110 or Vinnie Sorrentino at 759-6475.

Chess players, 7 to 11 p.m. Fridays, Bloomfield Civic Center, 84 Broad St. Chess tournaments first Fridays with trophies. Special section for children 6-14. For information, call Arkady Geller at 483-7927.

St. Mary's Youth Group, 8 to 10 p.m. Thursday nights, St. Mary's School gym, Msgr. Owens Place, Nutley. For those in 8th grade or older.

American Legion Auxiliary, Nutley Unit 70, 8 p.m. second Monday (except January), Nutley post home, 45 Franklin Ave.

Essex Salon Eight of the Eight and Forty, 8 p.m. third Monday, 45 Franklin Ave., Nutley.

Optimist Club of Belleville, 6:30 p.m. Thursdays, 3 Guys, Washington Ave. For membership information, call Gabe Nazzola at 997-2121 or Emil Nardachone at 450-8883.

Nutley Junior Woman's Club, 8 p.m. first Mondays, 216 Chestnut St. For membership information, call Debi at 661-1340.

AARP Chapter 57, Bloomfield, 1 p.m. second Wednesdays, Bloomfield Presbyterian Church on the Green, Broad St. Refreshments available 11:30 a.m. to 12:30 p.m. Community Service/Craft Guild meetings 1 p.m. first Thursdays, Bloomfield Civic Center, 84 Broad St., 1st floor.

Essex County Federation of Sportsmen's Clubs, 8:30 p.m. first Tuesdays, Bloomfield Civic Center, 84 Broad St. All sportsmen and sportswomen invited.

Belleville Historical Society, 7:30 p.m. first Tuesdays, Belleville Reformed Church, 171 Main St.

Nutley Historical Society, board meeting 7:45 p.m. fourth Thursdays, 65 Church St. New members welcome. Call 667-1528 for information.

Fairs, flea markets, rummage...

Rummage and book sale, 9:30 a.m. to 4 p.m. April 8, Belleville Reformed Church, Main and Rutgers streets. Clothes, bric-a-brac, linens, etc. etc.

Flea market and craft show, 9 a.m. to 5 p.m. April 10, Belleville High School, 100 Passaic Ave. Over 100 vendors. BHS senior class fundraiser.

Flea market and craft show, 9 a.m. to 5 p.m. April 17, Bloomfield Middle School, 60 Huck Road (off Broad St.) Over 100 vendors. Deborah Hospital fundraiser.

Thrift shop at Bloomfield Presbyterian Church on the Green, Wednesdays, 10 a.m. to 3 p.m.; Saturdays, 10 a.m. to noon.

Indoor/outdoor flea market, 9 a.m. to 4:30 p.m. May 14, Sacred Heart Parish Hall, Park Ave. and Ridge St., Newark. To reserve tables, call Florence at 565-5849 or 565-5843.

Fundraisers.

"Hula into Spring," full course dinner and tricky tray, 7 p.m. April 8, Branch Brook Manor, Belleville. \$20. For tickets, call Lisa at 450-8250. sponsored by Belleville School 8.

Bus ride to Atlantic City, sponsored by Belleville Democratic Club, April 10. \$20 includes \$10 in coins and \$5 food voucher. For ticket info, call George Simon days at 751-4142 or Frank Bonavito evenings at 759-5533.

Benefit cocktail party for Essex County Special Olympics, 5 to 8 p.m. April 10, Cyan's Beef & Ale, 24 First St., South Orange. Open bar with hot and cold hors d'oeuvres. Entertainment. \$20. Sponsored by coalition of Essex County law enforcement officers.

Annual dinner and fashion show, sponsored by Women's Auxiliary, Nutley Family Service Bureau, 6:30 p.m. April 12, Westmount Country Club, West Paterson. Fashions by Group USA Apparel. For reservations, contact Fran Cervasio, 215 Rutgers Ave., Nutley, 07110. \$30.

One day sight and sound tour to Strasburg, Pa. Water, Light and Screen show, buffet, Splendor of Easter show, April 13. Leave St. Mary's Hospital at 8 a.m. \$51. For information, call 470-3047 or 778-4378.

Chinese auction, to raise funds for homeless animals, 6:30 p.m. April 14, Farcher's Grove, 1135 Springfield Road, Union. Tickets at the door or call (908) 688-1073. Sponsored by People for Animals.

Fish and chips dinner, 5 to 7 p.m. April 15, St. Peter's cafeteria, 152 William St., Belleville. Takeouts 4:30 to 5 p.m. \$8. Catered by Arevle.

Discovery and education toy sale, April 15, lobby of St. Mary's Hospital, Passaic.

Chinese auction, April 15, St. Thomas the Apostle Church, 60 Byrd Ave., Bloomfield. \$7.50. Reservations required. Call 748-5383 after 4:30 p.m.

Leather goods sale, 9 a.m. to 4 p.m. April 15, General Hospital Center at Passaic. Luggage, handbags, wallets etc. Free parking in Oak Street lot.

Annual bunco party, 7:30 p.m. April 15, American Legion Post Home, 45 Franklin Ave., Nutley. \$5 includes coffee and dessert. Sponsoree by Essex Salon 8 of the Eight and Forty.

Pancake breakfast, 7:30 a.m. to 1 p.m. April 17, Bloomfield Civic Center, 84 Broad St. Sponsored by Kiwanis Club. \$3.50 adults, \$3 seniors and kids under 12. Tickets at the door or from members.

Bus ride to Clairidge Casino, April 17. Buses leave Bloomfield Middle School at 9 a.m. Sponsored by Bloomfield Central Little League. \$25 includes \$8 coin and \$5 deferred. For tickets, call Artee Lepage at 748-3654.

"Breaking the Code," 5 p.m. April 17, Studio Playhouse, Alvin Place, Upper Montclair. Scholarship benefit by Bloomfield-Glen Ridge Branch AAUW. \$10. For tickets, send check to Susan Reiher, 99 Day St., Bloomfield, 0073, payable to AAUW, Bloomfield-Glen Ridge Branch.

15th annual dinner fashion show, sponsored by Women of Irish Heritage, 7 p.m. April 21, Town & Campus, West Orange. \$40. For tickets and reservations, call 696-3062.

Chinese auction, 7 p.m. April 21, St. Peter's Episcopal Church, 380 Clifton Ave., Clifton. \$4 at the door.

Monthly luncheon, 11:30 a.m. to 1 p.m. April 21, Nutley Woman's Club, 216 Chestnut St. Pot roast, mashed potato, vegetable, salad, dessert, coffee. \$5. Sponsored by EMD. For reservations, call 667-1161 or 667-0211.

Tricky tray auction, 7:30 p.m. April 22, Parks and Recreation, 44 Park Ave., Nutley. \$7. For information, call 235-0671 or 284-1736. Sponsored by Washington School Mothers' Club.

Bus ride to Trump Plaza, April 23. Buses leave at noon from Bloomfield Middle School, return 11 p.m. \$25 includes refreshments and sandwiches on bus. First come, first serve for tickets. Sponsored by BHS-GALS. For tickets, call 338-8262, 748-7814 or 338-7662.

Spring auction, 5:30 p.m. April 23, Essex Catholic High School, 135 Glenwood Ave., East Orange. Dinner at 7 p.m. \$15. Sponsored by Parents Club.

National gold and silver sale, 9 a.m. to 4 p.m. April 27, 28, main lobby, General Hospital Center at Passaic. Sterling silver, 14K gold jewelry at wholesale prices. Cash and checks accepted. Free parking in Oak Street lot.

Bus ride to Atlantic City, sponsored by Belleville/Nutley Parade Committee, May 1. \$20. For information, call 667-0234.

Bus trip to Lancaster, Pa. May 12. Sponsored by Watsessing Park Tuesday Club. Living Waters show, lunch at Plain and Fancy Restaurant, guided tour. \$45. Call 450-9424.

Luncheon fashion show and Chinese auction, 11 a.m. to 4 p.m. May 21, Friar Tuck, 691 Pompton Ave., Cedar Grove. \$23. Call Rose Ruffalo at 743-8688 or Marie Pugno at 751-9664. Donations of auction gift items or contributions greatly appreciated. To donate, call Ann Dellare at 743-3906. Sponsored by Bloomfield Columbiettes.

Other events...

Day of Recollection, Rosary Altar Society, St. Anthony's Church, Belleville, 10 a.m. to 3 p.m. April 9, church basement. Conferences, sacrament of reconciliation, Mass. Lunch provided. Men and women invited. For reservations, call 751-4331 or 748-5087.

Canadian pilgrimage, Aug. 7-13. \$370 double occupancy. Sponsored by Bloomfield K of C and Columbiettes. Call Rose Ruffalo at 743-8688 for reservations and more information.

September alumnae celebration, plus other events, Girl Scout Council of Greater Essex County. For women over 40 who were active as girls or adults. Call Virginia Reed Brett at 746-8200.

Amateur radio license examinations, 7 p.m. fourth Tuesdays, Bloomfield Civic Center, 84 Broad St. Walk-ins O.K. For information, contact Carl, WA2BXQ3388357.

The Kid's Corner now registering for fall term. After school child care at Park United Methodist Church, Broad St., Bloomfield. Kindergarten through grade 5. Transportation available. For information, call 429-9667 11 a.m. to 6 p.m.

Class reunions...

Bloomfield 1944. Call 800-22-CLASS.

Bloomfield 1974, 20-year reunion, fall of 1994. Names and addresses to Reunion Committee, BHS '74, P.O. Box 1601, Bloomfield.

Bloomfield 1959, Oct. 8, 1994. Call 800-22-CLASS.

James J. Shawger School, Belleville, 1959. Contact Angela Cuzzo-Zarro, 54 Salter Place, Belleville 07109.

Belleville 1944, Class of 1944, 3 Ode Place, Piscataway 08854-2818.

PUTTING THE PEDAL TO THE METAL CAN HAVE A WHOLE NEW MEANING.



The shock, the anguish, the damage—the results of a crash far outweigh the time you save by driving too fast. It's a fact that your chances of seriously injuring someone increase the faster you go. And when you drive too fast for conditions, you make things even worse. A crash like this can happen in a heartbeat. And if it does, it will change your life forever.

⌚ SPEEDING GETS YOU NOWHERE FAST.
U.S. Department of Transportation

Hanle-Corona troth has been announced

Richard Hanle, Sr. of Clifton and Joyce Robak of Bloomingdale, announce the engagement of their daughter, Kristine J. of Nutley, to William A. Corona, son of Mr. and Mrs. Anthony Corona of Belleville.

The wedding will take place April 30, 1995.

Miss Hanle, an alumna of St. Mary's High School, Rutherford, is

a sophomore at William Paterson College, Wayne. She is a customer service representative with Automatic Data Processing, Clifton.

Mr. Corona, a graduate of Belleville High School, is a shipping clerk with National Lighting, Belleville.



William Corona — Kristine Hanle



Mark Clayton — Lidia Crocco

Lidia Crocco engaged to wed Mark Clayton

Mr. and Mrs. Angelo Crocco of Nutley announce the engagement of their daughter, Lidia, to Mark Anthony Clayton of Belleville, son of JoAnne Salerno and Norman Clayton.

The wedding is planned for Nov. 20.

Miss Crocco, an alumna of Nutley High School, is with the Division of Motor Vehicles.

Mr. Clayton, a Persian Gulf veteran, served three and a half years in the Army. He is employed by Jo-Lee Nursery and is also a self-employed carpet mechanic.

Maria L. Saporito, John Rega to marry

Mr. and Mrs. Joseph Saporito of Clifton announce the engagement of their daughter, Maria L., to John Rega, son of Geraldine Rega of Livingston and the late Anthony Rega.

The wedding is planned for May 13, 1995.

Miss Saporito, an alumna of Rutgers University, New Brunswick, is a benefits coordinator at The General Hospital Center at Passaic, Passaic.

Mr. Rega, a graduate of Montclair State College, Upper Montclair, is an insurance agent with Metropolitan Life Insurance, Florham Park.



Maria Saporito



PLEASE HELP — SANDY is a six month old small red Pit Bull puppy who requires surgery to restore her sight. She was abused and abandoned as a dog fight reject. Please help us fund her operation. Send donations to People for Animals, 433 Hillside Ave., Hillside, 07205. Adopt Sandy or one of the many dogs and cats available 11 a.m. to 3 p.m. April 16 at Pet Food Giant



Peter Morelli — Lorraine-Marie Leming

Lorraine-Marie Leming to wed Peter Morelli

Mr. and Mrs. August L. Leming, Sr. of Belleville announce the engagement of their daughter, Lorraine-Marie, to Peter Gerard Morelli, son of Mr. and Mrs. Peter F. Morelli of Edison.

Miss Leming, an alumna of

Belleville High School, is office manager with Hawkins, Delafield & Wood, Newark.

Mr. Morelli is a union electrician with Modern Electric, Clifton.

The wedding is planned for June 1995.

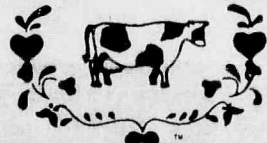


LAST CHANCE — Nutley Family Service Bureau Women's Auxiliary President Debra Harrison and Fashion Show Co-Chair Anne Walsh discuss final details of the annual dinner/fashion show. Tickets are still available for the fundraiser which is scheduled for Tuesday, April 12 at the Westmount Country Club, West Paterson. Gather your friends and family for an evening of fun and fashion. For reservations, call the Nutley Family Service Bureau at 667-1884.

**U.S. SAVINGS
BONDS**

Take
Stock
in America

COUNTRY FOLK ART SHOW & SALE



**APRIL 8-9-10
EDISON, NJ**

RARITAN CENTER EXPOSITION HALL

From: NJ Turnpike, Exit #10
I-287, Exit at Rt. #514 (one exit South of NJ TrnPk.)
Garden St. Pkwy. N., Exit # 127 > To 440 W to I-287 N.
Garden St. Pkwy. S., Exit # 129 > To 440 W to I-287 N.

**THE LEADING FOLK ART SHOW IN THE NATION
FEATURING OVER 200 OF THE BEST
FOLK ARTISANS FROM ACROSS THE COUNTRY**

Country & painted furniture; pierced & stenciled lamp shades; teddy bears; spongeware; salt glaze stoneware; baskets; Scherenschnitte; Windsor chairs; samplers; tinware; blacksmith; dolls & toys; grained frames; tile painting & stenciling; rag, braided & hooked rugs; carvings; country clothing & textiles; theorems; calligraphy; weathervanes; decoys; Shaker boxes; folk art paintings; whirligigs; floorcloths; dummy boards; quilts; fireboards; dried florals; candles; gourmet delights; French Country, Victorian, Southwest & Country-Western items. All Country decorating needs for sale. Items May Vary

Friday eve., 5 p.m. to 9 p.m. Adm. \$6
(Early Buying Privileges)
Sat. & Sun. 10 a.m. to 5 p.m. Adm. \$5
Children under 10 Adm. \$2
NO STROLLERS PLEASE!

Country
Folk Art Shows, Inc.
Box 111, Ortonville, MI 48462
(810)634-4151

Publishers of Country Folk Art & Yippy-Yi-Yea™ Magazines

Stork Club

Dominick Antonio Pereira

A second child, a son, Dominick Antonio, was born to Mr. and Mrs. Jack Pereira of Nutley March 21 at Clara Maass Medical Center, Belleville. Birth weight was 9 pounds, 7 ounces. He joins Gabrielle, three and a half.

Mrs. Pereira is the former Michele Ferrara, daughter of Mr. and Mrs. Robert Ferrara of Kearny. Mr. Pereira, son of Mr. and Mrs. Joaquim Pereira, also of Kearny, is a pressman with Wilkata Pkg. Group.

Daniel Dominick DiSimone

A fourth child, a son, Daniel Dominick, was born to Mr. and Mrs. Domenick DiSimone of Nutley March 23 at Clara Maass Medical Center, Belleville. Birth weight was 6 pounds, 12 ounces. He joins Gary, Greg and Bryan.

Mrs. DiSimone is the former June Wardell, daughter of June Wardell of Snellville, Georgia and the late Arthur Wardell. Mr. DiSimone, son of Mr. and Mrs. Domenick DiSimone of Nutley, is a firefighter with the Township of Nutley.

Alexander Ralph Estelle

A third child, a son, Alexander Ralph, was born to Mr. and Mrs. Chip Estelle of Belleville March 25 at Clara Maass Medical Center, Belleville. Birth weight was 12 pounds, 7 ounces. He joins Jessica, 16 and Jayson, three.

Mrs. Estelle is the former Abigail Gordon, daughter of Mr. and Mrs. John Gordon of Brookings, Oregon. She is a lab technician. Mr. Estelle, son of Mr. and Mrs. Ralph Estelle of Belleville, is a driver with Airborne Express.

Amanda Maria Garbarino

A fourth child, a daughter, Amanda Maria, was born to Mr. and Mrs. Louis Garbarino of Nutley March 22 at Clara Maass Medical Center, Belleville. Birth weight was 8 pounds, 12 ounces. She joins Louis, Jr., seven, Laura, four and Athena, two.

Mrs. Garbarino is the former Anna Liriano, daughter of Mr. and Mrs. Fermin Liriano of Jersey City. She is a social worker. Mr. Garbarino, son of Mr. and Mrs. Joseph Garbarino, is an accountant/auditor with Empire Blue Cross/Blue Shield.

NEW JERSEY UROLOGY ASSOCIATES P. A.
LOUIS J. DI BELLA JR., M.D. - IRA D. TANZER, M.D.
DIPLOMATES AMERICAN BOARD OF UROLOGY

**We are participating physicians
in the Medicare Program and accept
assignment for all office visits,
consultations, and surgery.**

OUR PRACTICE ENCOMPASSES THE FOLLOWING:

- Kidney, Bladder, and Prostate Surgery
including Laser Prostatectomy
- All Urologic Cancers
- Stone Disease—Both Medical and Surgical Treatment
Laser Lithotripsy and Shock Wave Lithotripsy at the Stone Center of New Jersey in Newark.
- Infertility
- Treatment of Impotence (With Insertion of Penile Prosthesis)
- Treatment of Urinary Tract Infection
- Cystoscopy and Vasectomy
- Prostatic Ultrasound

TWO CONVENIENT OFFICE LOCATIONS
180 FRANKLIN AVENUE **1265 PATERSON PLANK RD.**
NUTLEY, NEW JERSEY **SECAUCUS, NJ**
667-5666 **867-1297**

THESE PROGRAMS WON'T JUST OPEN DOORS. THEY'LL KNOCK DOWN WALLS.

Gibbs is offering three exceptional evening programs for people who want to get ahead in business. The **Administrative Assistant Program** is an intensive course for secretaries/ clerical looking to expand their opportunities and marketability. Options is a course that's part of our continuing education program in the evening. The course will give you a working knowledge of word processors, and microcomputers, as well as marketable secretarial skills. And our **Computerized Bookkeeping Program** gives you the financial and technical skills needed in today's computerized accounting field. All three classes start soon. We offer job placement and financial assistance to qualified applicants.

MONTCLAIR (201) 744-6967

Katherine Gibbs

HOW TO GET AHEAD IN BUSINESS

33 Plymouth Street, Montclair, NJ 07042

Name _____ Phone (H) _____ (W) _____
Address _____
Program of Interest _____

GRAND UNION

BIG SAVINGS!

40% OFF!

ALL BONELESS BEEF ROASTS* AT YOUR BELLEVILLE GRAND UNION!

EVERY U.S.D.A. CHOICE BEEF ROAST:

- TOP ROUND • SHOULDER
- SIRLOIN TIP • BOTTOM ROUND
- CHUCK • RUMP
- SEAMED EYE ROUND



*IN STORE PACKAGE PRICING REFLECTS 40% DISCOUNT
REGULAR RETAIL \$2.99 LB. TO \$4.29 LB. - PRICE AFTER DISCOUNT \$1.79 LB. TO \$2.57 LB.

White or Colored - Individually Wrapped

**Grand Union
American Singles**

8-oz.
Pkg.

99¢

Imported

**Red or White
Seedless Grapes**

Lb.

99¢

Frozen - Cheese

**Ellio's
9-Slice Pizza**

24-oz.
Pkg.

1 99¢

Assorted Varieties

**Ruffles
Potato Chips**

5.5-oz.
to 6-oz.
Bags

99¢

Oatmeal Chocolate Chip (16-oz.) or

**Sunshine
Chip-A-Roos**

17.5-oz.
Pkg.

1 99¢

Assorted Varieties

Regular or Diet
**Grand Classics
Soda**

**5 12-oz.
Cans
Plus Deposit
where req.**

**BUY ONE, GET ONE...
FREE!**

Get One 50-oz. Cont.
Liquid for Laundry
**Dynamo Ultra
Detergent**

When you purchase one 50-oz. Cont.
Dynamo Ultra Detergent
at our regular low price.

Ziti, Elbows or Regular or Thin
**Creamette
Spaghetti**

**2 1-Lb.
Pkgs.**

Regular, Assorted Colors,
Puff-Up or Plus Regular (108)

**Puffs
Facial Tissue**

99¢
Pkg.
of 175

**SAVE WITH
THE**

**GRAND
SAVINGS PLUS**

CARD!

Available at your
Belleville Grand Union.

PRICE
GOOD THRU
SAT., APR. 9, 1994

Coke Classic or Regular or Diet Cherry
Coke or Regular or Caffeine Free

**Coke or
Diet Coke**

Sale Price...\$1.19

2-Ltr. Btl.
Plus Deposit
where req.

**YOU SAVE
50¢**

69¢

FINAL COST - LIMIT ONE

PRICE
GOOD THRU
SAT., APR. 9, 1994

Twin Pack

**Thomas'
English Muffins**

24oz.
Pkg.

Sale Price...\$2.49

**YOU SAVE
50¢**

1 99¢

FINAL COST - LIMIT ONE

PRICE
GOOD THRU
SAT., APR. 9, 1994

Assorted Varieties
Low Fat Frozen Yogurt or Regular

**Turkey Hill
Ice Cream**

1-Pt.
Cont.

Sale Price...\$1.49

**YOU SAVE
50¢**

99¢

FINAL COST - LIMIT ONE

SUPER COUPON

White or Designer

**Bounty Jumbo
Paper Towels**

One
72-Sheet
Roll

59¢

With This Coupon And Purchase of \$5.00 Or More. Good
Apr. 3 Thru Apr. 9. Limit One Coupon Per Family.

**GRAND
UNION**

SUPER COUPON

Ultra White (170), Yellow,
Blue or White - 280-Sheet Roll

**Charmin
Bath Tissue**

One
Pkg. of
4 Rolls

69¢

With This Coupon And Purchase of \$5.00 Or More. Good
Apr. 3 Thru Apr. 9. Limit One Coupon Per Family.

**GRAND
UNION**

SUPER COUPON

Breakfast Cereal

**Kellogg's
Rice Krispies**

One
15-oz.
Box

1 59¢

With This Coupon And Purchase of \$5.00 Or More. Good
Apr. 3 Thru Apr. 9. Limit One Coupon Per Family.

**GRAND
UNION**

Effective Sun., Apr. 3 thru Sat., Apr. 9 at your Belleville Grand Union. We reserve the right to limit sales to 3 pkgs. of any item. Not responsible for typographical errors.

Belleville

SPORTS

BUC SHOTS

by Mike Lamberti



Okay, so it was a little chilly.

But, after the past three months, with the 18 snowstorms, along with wind chill factors, spinning tires on ice and that sinking feeling that the snow wouldn't melt until Memorial Day, last Saturday was a welcome sight.

Clearmon Field was in good shape. It was time for softball, in this case Lady Buc softball, and because of that, all seemed pretty good around town.

The Belleville softball team opened the 1994 campaign with a home game against Livingston. And the sites and sounds that are synonymous with softball, or baseball, were quite evident.

There was **Lynn Giachetti**, with her now familiar stance at short-stop. It's going to seem strange not seeing her on the diamond a year from now.

Over at third base, **A.C.** was preparing for another inning, in her usually intense manner. She'll "high five" any teammate that runs past her and generally gives the fans a few messages during the game.

On the right side of the diamond were some new faces, but they already seem like they've been there for a while. **Natalie Cruise** at second, **Jackie Cerami** at first.

While she's only a sophomore, **Daniele Brodo** already has a style behind the plate that is unmistakable.

When you get to the outfield, **Kristin Galioto** now runs the show from centerfield. She's surrounded by two new players who will become familiar names soon, **Kim Mahoney** and **Joell DellaVolpe**.

And so it begins. The fans, the "season ticket holders" if you will, were back in their familiar seats at Clearmon.

With the exception of one fan, who looked a little out of place, but quite happy with his new "ticket".

Seated on the third base line, about six rows up, was **Carl Corino**, an interested spectator who knows a little something about Lady Buc softball.

Seems Carl coached this team for about, 14 seasons, and led them to, let's say, a little over 300 wins.

There were a few conference championships, a truck load of trips to the county title game, a handful of county championships and just a few memories during his tenure on the diamond.

He decided to give up the reigns after last season, turning them over to **Cheryl Marion**, one of the brightest young coaches Belleville has seen in quite some time.

So while Corino watched, Marion handed the ball to her ace pitcher, senior **Kim Piscatowski**.

It seems like we've been saying that name for a while, too.

And "Pisco" threw the first pitch, and the Spring of 1994 was underway and the memories of all those snow storms were just a distant grimace now.

"Livingston's got a good team," Corino said to me in the first inning last Saturday. "Their strength is their pitching. That girl can keep a team off balance."

Amazing how prophetic Corino was on this day.

Livingston's pitcher did keep the Belleville bats off balance, and the Lancers, traditionally one of the stronger teams in Essex County, came away with a 3-0 win.

But not to worry. It's one game in a season that will probably have about 28 games. And although there was some disappointment, there's four games next week, including one on TV-3 this Saturday at Caldwell.

So the season ticket holders such as **George Zanfini**, **Eve Corino**, **Desiree Johansen**, **Bob Marion** and **Nancy** (was that a close play at third base 12 years ago, or what?) **Coffey** (along with a number of other faithful fans) sat in the cool Clearmon air and watched another game.

They offered opinions. Questioned a few calls at first base, shared a few memories and, despite the loss, seemed happy that spring was back. There will be plenty of games to watch, plenty of times that Coffey can yell at me again for mentioning "the play" at third base when the seniors on this current team were about five years old.

Desiree spoke about her upcoming marriage to a certain first base coach named **Doug Stone** (and if there are two people in the world more suited for each other, I don't know who they are) between innings.

And it doesn't take much to get Zanfini going about a certain game played 19 years ago at Belleville between his Bellboys and the Campers from Irvington.

And just when you thought it would get dull, Corino would get that certain look in his eye when he sees a close play and harkens back to the aforementioned play at third in 1982.

"I won't forget it," Corino said, about a play, ironically against Livingston, in May of '82 in the state sectional semi finals. "That player looked out to me."

And the debate goes on. Eve Corino finally decided it was time to go home and work on lunch. But she'll be back. She's been tied into the program as coach and fan for close to 20 years now.

Bob Marion, who is somewhat related to the new softball coach, watched his daughter's team play and, as usual, kept his opinions low key.

He did discuss his health, which is, I'm happy to say, excellent. It's only recently that I even called Bob Marion by his first name. It was always "Mr. Marion".

Anyway, it was an enjoyable morning. Spring is back, the snow is gone (and I'm going to predict it's gone until next winter) and everything seems pretty good again.

The season ticket holders even spoke with great fondness of the late **Ed Berlinski**.

"A legend," Zanfini said of "B". "People don't realize what this man accomplished, both in sports and in life. He was a legend."

And the conversations will continue for another six to eight weeks.

It was good to be back at Clearmon.

Spring is here.

Thank goodness.

Giachetti, Mahoney each single

Lady Bucs blanked by Livingston, 3-0

By Mike Lamberti

It was the beginning of a new era, and although the results weren't exactly what the new coach had hoped for, there's plenty of optimism for the '94 softball season.

The Lady Bucs were downed by Livingston 3-0 last Saturday at Clearmon Field. The girls were originally scheduled to play in the Mt. St. Dominic tournament last Saturday, but the tourney was cancelled because of wet grounds in Caldwell.

The team battled Lyndhurst and Randolph earlier this week. Tomorrow, the team has host to Barringer, commencing at 4 p.m. On Saturday, it's off to Caldwell for an 11 a.m. game that will be televised by TV-3. Next Monday, the team is at Montclair and next Wednesday, the road trip continues at Ridgewood. The games at Montclair and Ridgewood commence at 4 p.m.

Head coach Cheryl Marion saw her team play well defensively, but the bats were chilled by a good

Livingston pitcher.

"Defensively, I felt we played pretty well," Marion said. "But we didn't hit. We had two hits in the game and we couldn't get the offense on track."

Senior pitcher Kim Piscatowski hurled a good game, but she was hampered by a few well placed Livingston hits.

"Kimmy did pretty well," Marion said. "She just has to work on her total assortment of pitches. She has a good changeup, and she should use that more in addition to her fast ball."

Belleville received a bunt single from freshman Kim Mahoney and a hard hit single by senior Lynn Giachetti. Unfortunately, those hits came in separate innings. Belleville never had a runner past second base in the game and nine Lady Buc batters were struck out. All told, four Belleville hitters reached base.

"All of the girls in our lineup are capable of hitting consistently," Marion said. "It will happen. It was just one game, an out of league game and there's nothing to worry



Kristin Galioto gets ready to take cut at plate. The leadoff hitter this year, Galioto, a senior centerfielder, will be a key member of '94 team.

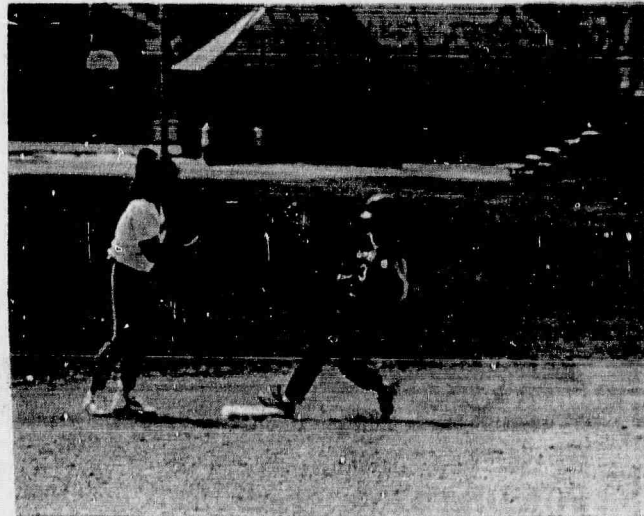
about. These kids can play. They shouldn't be discouraged."

NOTES: Marion used a lineup of Kristin Galioto leading off, Andrea Curran hitting second, Giachetti third, Piscatowski

cleanup, Jackie Cerami fifth, Danielle Brodo sixth, Natalie Cruise seventh, Joell DellaVolpe eighth and Mahoney ninth. There's more on the opener in this weeks Buc Shots.



Kim Piscatowski throws first inning pitch during season opener at Clearmon Field last Saturday. "Pisco" pitched well, but Lady Bucs fell, 3-0.



Natalie Cruise jogs in to second base. The new second baseman, Cruise will be relied upon to play good defense and provide speed on basepaths.

Golfers hope to hit course this week

By Mike Lamberti

The lingering effects of the Winter of '94 continue to plague the Belleville golf team.

Head coach Gene D'Allesandro announced that the first week of matches, scheduled for this week, have been cancelled. Those matches will probably be re-scheduled near the end of the season, probably in early June.

"We haven't been able to get on the course," D'Allesandro said. "It's a problem most of the teams in this area have had. Hendrick's Gold Course and Forest Hills have been closed because of all the wet weather."

The coach was optimistic that the linksters would see some practice time on the course this week.

"I can't expect the kids to be able to play a varsity match with no practice time," D'Allesandro said.

"So far, we've been practicing at a driving range, but that's not going to get us ready for the season."

The Bucs will have a veteran team, once they get a chance to play on a legitimate golf course.

"We have four seniors back, along with underclassmen that played last year," the coach said. "The kids know what the game is all about."

The senior class is led by

SungBok Lee, Roger Hanos and David Loungo, all of whom played on the '93 team. Also returning with some experience is senior Anthony LaRocca.

Juniors Sean Mahoney and Tom Escott should provide depth on the varsity roster, as will sophomore Jeff Sheridan.

"I don't know how good we will be," D'Allesandro said. "I feel we will continue to get better as the year progresses. We have some talent here, but the league that we play in has a lot of strong teams."

Tentatively, Belleville is slated to open the season next Monday, April 11 with a match against

Teaneck at Forest Hills Golf Course. The Bucs will take on league rival Paramus Catholic on April 12 at Forest Hills.

"The matches that were cancelled early in the year will probably be made up," D'Allesandro said. "I'm hoping to get them all in, even if it means playing in early June. The school year lasts until late June this year, so there is time to make up the matches."

D'Allesandro is in his eighth year as head coach of the golf team. The Bucs have had some dominant teams during his tenure and this years team could rank among the better Buc golf teams that have played over the past ten years.

Villano's rowers start season at Flicks

By Mike Lamberti

A true rite of spring is the return to the waters by the Belleville crew team.

Dennis Villano's team is not only back on the Passaic River, they have already competed in the "Flick" races in Philadelphia.

The Flicks are a series of races held in late March and throughout April on Sunday's in Philadelphia. Some of the strongest teams on the east coast compete in the races, which are culminated by the City Championships in early May.

The team raced in its first flick on March 27, and according to Villano, fared well.

"Some of the kids did pretty good," Villano said, "but like I've always said, the season really starts on May 1."

Villano refers to the regattas that commence in May, beginning with the aforementioned City

Championships. After the cities, the team takes part in the Mid Hudson, Stotesbury and finally, the national championships on Memorial Day weekend.

"That's what all the work is all about," Villano said.

On March 27, the lightweight womens four team took second, as did the junior four women and the novice four men.

"Our senior and junior four mens team will get better," Villano said. "We all have a lot of work to do, and the Flicks are a good way for us to get ready for May."

The Bucs will compete next Sunday at the Flicks. They will be "home" on April 16, for the Kearny Invitational. That race will begin at 10 a.m. from the Belleville-Nutley-Kearny boathouse at the Arlington Bridge.

(Continued on page 12)



Members of the boys' crew team pose for a picture at this year's row-a-thon.

Rec round-up

Pre-School Registration: The Belleville Department of Recreation and Cultural Affairs is accepting registration for the pre-school play program for 4-year old children.

The program consists of games, stories, songs, art, outside play when weather permits, short rest periods and occasional holiday parties especially designated for pre-school children.

A session is from 9 a.m. to 11 a.m. or 12:45 to 2:45 p.m. five days a week with class limited to a maximum of 23 students in each session. The cost of the 32 week session is \$125. The mothers of the children accepted must participate by serving one duty day about every eight or nine days, according to a published schedule.

School will begin on Monday, September 19, 1994 and will run through May, 1995.

Children born between October 1989 and September 1990 who will enter Kindergarten in September 1995 are eligible. Participants must be Belleville residents. Since

there are just a limited number of openings, applications will be accepted on a first-come, first-served basis only.

Children must be able to speak and understand English in order to participate. Children enrolled in the morning program cannot also be in the afternoon program and vice versa. A \$25 deposit is required to hold your spot in the program.

For further information and enrollment, please contact the Belleville Recreation Department at 450-3422 as soon as possible - Monday through Friday from 8:30 a.m. to 4 p.m.

Rec Final Standings:

Men's "B" Volleyball:
B.F.D. 31-14
Thirty-One Club 30-15
Joey's Pizza 24-21
Nino's II Pizza 22-23
Park Ave. Chiropractic 21-24
B.P.S.C. 7-38

Women's Volleyball:
Aces & Eights 41-4
V. Sylvestro's Market 35-7
Volleyball Busters 35-10
Set For Life 33-9
Michael's Roscommon 16-29
Stefanelli Trucking 15-33
Chandeller 10-32
Auremma's Spikers 7-38
The Volley Girls 6-36

Senator Bradley to serve on golf tournament committee

Senator Bill Bradley has agreed to serve as an honorary member of the Mountainside Hospital's Pro/Am Golf Tournament Committee.

"I am pleased to be part of the committee and to help raise funds for this local hospital," said Senator Bradley.

The committee is chaired by avid local golfers, William H. Connolly, Jr., and Gary Rombough, M.D.

"This is a first class tournament that the amateur and professional golfers look forward to each year," said Dr. Rombough. "We are delighted to have Senator Bradley's name associated with our effort."

The 13th annual golf tournament will be held on Tuesday, May 17, at the Montclair Golf Club. This year's format will once again pair amateur foursomes with a professional golfer from the NJPGA. The money raised from the tournament will go toward the capital needs of the hospital.

The Pro/Am Invitational event includes clinics, which are led by the professional golfers, brunch,

and tournament play. The event concludes with a cocktail reception, followed by a buffet dinner and awards ceremony. Entertainment will be provided by Dennis Walters, a well-known golf performer.

The cost to participate in the Pro/Am Invitational is \$650 per person or \$2,600 per foursome. Participants enjoy a full day of golf at one of New Jersey's finest golf clubs and the camaraderie of friends, associates and some of the finest professional golfers from our state.

Individuals and corporations may also participate in the event as a Sponsor (\$5,000) Benefactor (\$1,000) or Patron (\$500). These major contributors underwrite the costs of the tournament and directly influence the net proceeds. Their generosity largely determines the success of this fund raising effort for the hospital.

For more information about playing in the Pro/Am Invitational or about becoming a Sponsor, Booster, Benefactor, or Patron please call the Mountainside Hospital Foundation at 429-6238.

Belleville Varsity Baseball			
Date	Opponent	Time	Place
Apr. 4	Eastside	4 p.m.	Home
Apr. 8	Barringer	4 p.m.	Away
Apr. 9	Caldwell	11 a.m.	Home
Apr. 11	Montclair	4 p.m.	Home
Apr. 13	Ridgewood	4 p.m.	Home
Apr. 15	Clifton	4 p.m.	Away
Apr. 18	Bloomfield	4 p.m.	Home
Apr. 20	Bergen Cath.	4 p.m.	Home
Apr. 22	St. Joseph	4 p.m.	Away
Apr. 25	Hackensack	4 p.m.	Home
Apr. 27	Paramus	4 p.m.	Away
Apr. 29	Teaneck	4 p.m.	Home
May 2	Paramus Cath.	4 p.m.	Home
May 4	Nutley	4 p.m.	Away
May 6	Don Bosco	4 p.m.	Away
May 9	St. Joseph	4 p.m.	Home
May 11	Hackensack	4 p.m.	Away
May 13	Paramus	4 p.m.	Home
May 16	Teaneck	4 p.m.	Away
May 18	Paramus Cath.	4 p.m.	Away
May 20	Nutley	4 p.m.	Home
May 23	Don Bosco	4 p.m.	Home

Sound Bites

"Even Betty Crocker burns a cake now and then." - relief pitcher Bill Caudill after a bad game.

"It's just a job. Grass grows, birds fly, waves pound the sand. I beat people up." - Muhammad Ali.

Quarterback/receiver camp

From June 26-29, Trenton State College will again host the nationally acclaimed All-American Quarterback/Receiver Camp.

For information and applications, write to QB/R Camp, Box 6006, Santa Barbara, CA 93160 or call (805) 967-2222.

Rowers gear for Kearny

(Continued from page 11)

"We're working on some possibilities when it comes to boats," Villano said. "We could have a mens novice eight shell, and a freshman four, depending on how things work out."

Villano's coaching staff consists of Maureen Russo, who will work with the novice rowers, Dan Passarella, who will coach the var-

sity women and Eric King, who will coach the eighth graders. Villano will be directly responsible for the varsity men.

"We're real happy to have Dan join our staff this year," Villano said. "He's a former Belleville rower who is very knowledgeable about the sport. He also coached at Marietta College and was with Nutley last year."



Coach Dennis Villano poses for a picture with members of this year's girls' crew team.

Aprica®

3 DAY SALE!!

Fri., Sat., Sun. - April 8th, 9th, 10th

STROLLERS From \$169.99 And Up!

**APRICA TAG-ALONG BELT BAG (\$30 Value)
FREE WITH EVERY STROLLER PURCHASE**

**REGISTER NOW
FOR DRAWING!**

FREE

ROYAL PRAM
(suede)

\$999.99 Value!
(no purchase necessary)



FROM HEAVEN TO SEVEN

299 Broad St., Bloomfield

743-2395

PRO SOCCER

OPENING DAY

APRIL 9

Saturday Night 8 P.M.

Belleville Municipal Stadium

Tickets \$5.00

Kids Free

if accompanied by an adult

Call for Tickets

201-773-5096



VS

BROOKLYN ITALIANS

DeMassi

PONTIAC

IN LYNDHURST

LOU DeMASSI'S DISCOUNT CORNER SINCE 1937



939-6100

EVERY DAY LOW LEASE PRICES ALL MAKES & MODELS

★★★★★ FIVE STAR SERVICE EXCELLENCE AWARD WINNER

TRUTH! Honesty! INTEGRITY!

NOT JUST WORDS AT DEMASSI!

If your
tired of
small print & big
promises...

EASY LEASE

IS JUST
FOR YOU!
NO HIDDEN COSTS!
NO AD ONS!

QUALITY USED CARS

1991 SUZUKI SAMURAI JL
4 cyl eng, 5 spd man trans, pwr/steer/brks, no air, am/fm stereo, soft top. 24,016 mi. VIN#M4103954. **\$6695**

1988 BUICK RIVIERA
6 cyl eng, auto trans, pwr/steer/brks/winds/ks/seats, air cond, am/fm stereo case, tilt, sun ri, rr def, cruise, tint gls, alloy whls. 79,646 mi. VIN#J408338. **\$7495**

1991 FORD TEMPO 4WD
4 cyl eng, auto trans, pwr/steer/brks, air cond, tilt, rr def, tint gls. Stk#U3591. VIN#MB1157946. **\$8495**

1991 PONTIAC BONNEVILLE
6 cyl eng, auto trans, pwr/steer/brks/winds/ks/seats, air cond, am/fm stereo case, tilt, cruise, rr def, tint gls, alloy whls. 23,007 mi. VIN#M1202061. **\$10,595**

1992 HYUNDAI SONATA GLS
4 cyl eng, auto trans, pwr/steer/brks, air cond, am/fm stereo case, rr def, tint gls. Stk#U3610. 30,799 mi. VIN#NB075161. **\$10,995**

1990 VOLVO 740 TURBO
4 cyl eng, auto trans, pwr/steer/brks/winds/ks/seats, air cond, am/fm stereo case, tilt, cruise, rr def, tint gls. Stk#U3574. 50,142 mi. VIN#L2407721. **\$14,995**

1991 CADILLAC ELDERADO
V8 eng, auto trans, pwr/steer/brks/winds/ks/seats, stereo w/CD player, tilt, cruise, rr def, tint gls. Stk#U3630. 48,046 mi. VIN#N011106. **\$18,695**

1991 CADILLAC DEVILLE
V8 eng, auto trans, pwr/steer/brks/winds/ks/seats, air cond, am/fm stereo case, tilt, cruise, rr def, tint gls. Stk#U3623. 40,953 mi. VIN#M263405. **\$16,995**



NEW 1994 PONTIAC GRAND AM 2 DR

Equip incl: 4 cyl eng, auto trans, pwr/steer/ABS brks, air cond, am/fm cass, tint gls. Stk#9525. VIN#RM57838. MSRP \$14,694. First months payment + \$299 refundable security deposit due at inception. Purchase option at lease end = \$5730. Total cost = \$10,552.

\$199

LEASE FOR

PER MONTH



NEW 1994 GRAND PRIX 4 DR

Equip incl: 6 cyl eng, auto trans, pwr/steer/ABS brks/winds/ks/seats, air cond, cruise, rr def, am/fm cass, rem trunk rel, dual air bags. Stk#950. VIN#RF205304. MSRP \$17,911. First months payment + \$343 refundable security deposit due at inception. Purchase option at lease end = \$7275. Total cost = \$12,664.

\$243

LEASE FOR

PER MONTH



NEW 1994 PONTIAC BONNEVILLE

Equip incl: 6 cyl eng, auto trans, pwr/steer/ABS brks/winds/ks, air cond, tilt, cruise, rr def, am/fm cass, illum entry, gauges, Lamp Group. Stk#961. VIN#R4250338. MSRP \$21,882. First months payment + \$396 refundable security deposit due at inception. Purchase option at lease end = \$8387. Total cost = \$14,248.

\$276

LEASE FOR

PER MONTH

Prices include all costs to be paid by a consumer, except for licensing, registration & taxes. Above leases are 48 month closed end leases. \$1000 down. 12,000 miles per year then 10 cents per mile thereafter. Lessee responsible for excess wear & tear. Qualified buyers.

DeMassi
PONTIAC
IN LYNDHURST

PARK AND RIVERSIDE AVENUE, LYNDHURST

YOUR LOCAL PONTIAC
DEALER FOR BIGGER
SAVINGS! • HOURS:
MON.-FRI. 9-9, SAT. TIL 5

N.J. Stallions to kick off season on Saturday

The New Jersey Stallions, Belleville's new professional soccer team, will kick off their season on Saturday, April 9, against Brooklyn Italians at Municipal Stadium at 8 p.m.

Prior to the game, there will be a youth game (ages 6-8) at 7 p.m. between Belleville and Clifton.

There will also be halftime contests with prizes, and Belleville mayor Marina Perna is expected to be on hand for the festivities.

The Stallions are part of the North East Super Soccer League (NESSL), one of the top regional leagues in the United States.

Many former stars of the North American Soccer League have played in the NESSL, including Hubert Birkenmaier and Andranik Eskandarian of the Cosmos, and Dragan Radovic of the Portland Timbers, as well as several current members of the U.S. National Team.

Notable local players for the Stallions include Donato DiGuglielmo, a Belleville resident, and Ferdie DeMatthaeis of Bloomfield. DeMatthaeis played for the Cosmos during the 1980's.

N.J. Stallions Spring Schedule

Opponent	Date	T i m e
Brooklyn	4/9/94	8 p.m.
Hoto Bavarian	4/17/94	2 p.m.
Deportivo Coli	4/23/94	8 p.m.
Frosinone	5/1/94	4 p.m.
All State America	5/8/94	2 p.m.
Polish American	5/14/94	8 p.m.
Hercules	5/22/94	2 p.m.

* All home games are in bold

Soccer clinic offered

A free soccer clinic, sponsored by the Bank of New York, will be held on Sunday, April 10, from 9 to 11 a.m. at the Sportsplex at the Meadowlands.

The two-hour soccer clinic will consist of entertaining and informative activities, and will be instructed by Werner Roth, former captain of the New York Cosmos.

There will also be a drawing for tickets to World Cup playoff games at Giants Stadium.

The clinic is open to boys and girls ages 8-12. Children must be accompanied by an adult.

Those interested in attending the clinic may sign up at any Bank of New York branch located in Essex, Passaic, Hudson, and Bergen Counties.

If there are any questions, please contact Mike Lamberti, Bank of New York branch manager, at (201) 991-6663.

Income Tax Preparation

Accountant & Consultant
to individuals & businesses
*Knowledge, Quality
& Experience*

James P. Devine, CPA
309 Glenwood Ave.
Bloomfield, NJ 07003
1-800-566-1040

COUPON SPECIAL

FREE HOT WAX CAR WASH

\$6.00 + Tax

For Full Service

Exterior \$5.25 + Tax
(with This Coupon)
Expires 4/30/94

FRANKIE'S FUTURMATIC BRUSHLESS CAR WASH

305 Broad St. • Bloomfield
748-9459

Open Mon. - Sat. 8-6
& Sun. 8-3

Registration for Advil Mini Marathon

On June 4, 1994, thousands of women will be on the run - toward the finish line, that is - at the 23rd annual all-women's Advil Mini Marathon in New York City's Central Park.

Experienced athletes interested in going stride for stride with the running elite, as well as novices looking forward to participating in their first race, will make up the field in the Advil Mini Marathon: the event for every woman.

But this event is much more than just another run in the park. Part of a series of running or walking events organized by the New York Road Runners Club, the prestigious and world-renowned Advil Mini Marathon 10K (6.2 miles) is the grand finale to a three-month fitness and training program for women of all ages and running abilities.

Other Advil Mini events prior to the 10K run include the New

Runners Clinic, a motivational and educational program designed to help beginners and experts develop a training regimen, and a 5K Tune-Up and Pee Wee Run on Mother's Day.

All 1994 participants will receive an Advil Mini Marathon T-shirt and runner's packet filled with product premiums and coupons. All 10K race finishers also will receive an Advil Mini Marathon medal to celebrate their victory.

While every participant of the race is considered a winner, there will also be category competitions, including mother/daughter teams, sister teams, and individual age groups. In addition to the award medals, top winners in each category will receive trophies.

In previous years, thousands of women have participated in the Advil Mini Marathon Series, including running greats such as

Grete Waitz, Joan Benoit-Sameulson and Francie Larrieu-Smith.

Women of all ages who are interested in participating in any part of the 1994 Advil Mini Marathon Series should call the Advil Info Line at (212) 423-2294 or send a self-addressed stamped envelope to: Advil Mini Marathon, 9 East 89th Street, New York, NY, 01028.

One small reason to ask your employer to include Mountainside Hospital in your health plan.



Our Birthing Center delivers in every way.

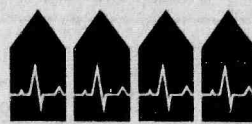
The Mountainside Hospital Birthing Center offers a variety of advantages that help to ensure the highest standards of medical care.

- **Personalized Care** - we provide the level of medical technology you need, *and* the personalized care and emotional support you depend on.
- **Highly qualified physicians** - including obstetrician/gynecologists, neonatologists, anesthesiologists and 24-hour, in-house pediatric coverage.
- **Excellent nursing staff** - our staff averages 10 plus years of experience and many have Ob/Gyn specialty certifications.

- **Comprehensive parent education programs** that prepare you mentally and physically for the whole childbirth experience and teach you valuable parenting skills.
- **Birthing rooms** that combine a warm, comforting setting with the most sophisticated medical technology. This can make a big difference to both you and your baby.
- **Home Care** - we will soon be offering an early maternity discharge program designed to reduce the cost of your hospital stay while providing you and your baby with the support of our Home Care staff.

So come take a look. When you see all the great reasons to ask your employer to include Mountainside Hospital in your health plan, you may find the smallest reason is the best reason of all.

For your Parent Education brochure and a 10% discount on any program, call 201-429-6936.



THE MOUNTAINSIDE HOSPITAL

You'll Like The Way We Treat You.

BAY AND HIGHLAND AVENUES, GLEN RIDGE/MONTCLAIR, NEW JERSEY 07042



The right people TO DO BUSINESS WITH! BUSINESS CARD DIRECTORY

KINDLY CLIP AND SAVE THESE CARDS FOR FUTURE REFERENCE

ADVANCED RECOVERY Recycling

CENTER FOR RECYCLING AND RECOVERY

Buyers of Aluminum

Aluminum Cans, Copper, Brass, & Non-Ferrous

* HELP WANTED *

CDL LICENSE • 25 & OVER

3 Montgomery St. • Belleville • 450-9797

Registered Representative
Michael McLafferty

Pruco Securities Corporation

A Subsidiary of The Prudential

213 Washington Street, Newark, NJ 07102-2992

1-800-382-7121

Variable Life Insurance • Variable Annuities
• Mutual FundsMichael McLafferty
District Agent

The Prudential

22 No. Spring Garden Ave.

Nutley, NJ 07110

Residence: 201-667-8534 Fax: 235-0026

PRIVATE LESSONS

ONE
ON
ONEPERSONALIZED
FITNESS
PROGRAMS

YOU'VE GOT WHAT IT TAKES!

Muscles by Michele
(201) 450-1943Certified Personal Trainer
Certified Aerobics Instructor

HADCO

Construction Co.

The newest Designs & Concepts for your home.

Specializing in:

- Kitchens • Baths
- Remodeling • Additions
- Free Estimates & Design

Servicing Essex County

226-8789

CHARMING LADY

Beauty Salon

144 Chestnut St.

Nutley

Complete Care and Coloring
Specializing in Perms and Cuts
to suit your special look

667-2133 appt. only

Laura Laino

ATTENTION HOMEOWNERS:

ADD A COMPLETE NEW LOOK TO
YOUR KITCHEN AT A FRACTION OF
THE COST OF REMODELING!
CALL
The "COUNTERTOP CONNECTION"
450-1900
* Custom Countertops made on the PREMISES
* Many styles & colors to choose from,
Conveniently located in Belleville

MARK'S MAJOR APPLIANCE



AIR CONDITIONING & REFRIGERATION REPAIR

- REFRIGERATORS
- FREEZERS
- WASHERS
- DRYERS
- DISHWASHERS
- AIR CONDITIONING
- WALL OVENS
- RANGES ETC.

INDUSTRIAL • RESIDENTIAL • COMMERCIAL

★★ SALES SERVICE ★★

• 24 Hour Service •

201-338-4929

BILL'S GUTTER SERVICE

- Gutters & Leaders Cleaned and Flushed
- Repairs and Installation
- Quality Screening • Tree Trimming

CALL
338-0448

ALL WORK GUARANTEED

MODERN AUTO PARTS

Serving The Area For Over 45 Years

FOREIGN & DOMESTIC AUTO PARTS

— Paint Supplies —

★ LOW DISCOUNT PRICES ★

 Open 7 Days
759-5555
 82 Rutgers St., Belleville

Express GLASS SERVICE INC.

GLASS FOR ALL PURPOSES

- Plate Glass Replacements
- Store Fronts
- Aluminum Door Repairs
- Storm Window & Screen Repairs
- Safety Glass
- Insulated Plexy Glass
- Window Repairs

CUSTOM WALL MIRRORS

- Etched Glass
- Table Tops (Framed & Frameless)
- Furniture Tops
- Shower Doors
- Mirrored Closet Doors

 FREE
ESTIMATES **759-2828**

MILLER & WALSH TYPEWRITER CO., INC.

DISTRIBUTORS OF ROYAL PRODUCTS
ELECTRONICS, CALCULATORS & TYPEWRITERS

Sales • Service • Supplies • Rentals • Laminating

GEORGE SANTORA

(201) 743-9150

FAX: (201) 743-4778

71 E. PASSAIC AVE.

BLOOMFIELD, N.J. 07003

Inground Liners Installed
Openings, Closings
Concrete, Vinyl
SERVICE & SALES
POOLS PLUS INC.
Personal and Friendly Service

Louis Santuoso

(201) 759-0910

COMPUTER BASICS

INSTALLATIONS • SERVICE
TUTORING • NETWORKING

MICHAEL

(201) 450-8135

C & C Autoworks

Auto Body

Painting & Detailing

3 Cleveland Street

Belleville, N.J. 07109

Phone (201) 751-2299

SAM

Tricia Snader
Prudential Representative

The Prudential
11 Sunflower Avenue
Paramus, NJ 07652
Office 201-262-4100 Ext. 226
Fax 201-262-6446
Residence 201-667-2239

YOUR NUTLEY REPRESENTATIVE

Siding/Window Specialists CAMPBELL CONSTRUCTION

All Types of Vinyl Siding
Replacement Windows • Top Quality Work
Affordable Prices • Senior Citizen Discount

~ FREE ESTIMATES ~

Call : 661-9120

AWARD WINNING SIDER

ESSEX COUNTY PAINTING & WALLPAPERING

- * We "Specialize" in Sponge Painting *
- * Popcorn Ceilings *

FREE ESTIMATES

Angelo - 748-4938

Angelo Scarano 743 2801

Quality Dairy Products from Welsh Farms

and Freshly baked organic breads from
The Bread Co. Montclair

DELIVERED TO YOUR HOME

Our 20th Anniversary

LIDO AUTO BODY

Collision Specialists

Foreign Car Specialists

Insured Approved Shop

751-7776

110 Roosevelt Ave. Belleville

10% discount for Senior Citizens

COLABELLI LANDSCAPING CONTRACTORS

- Maintenance & Designs • Shrubs • Mulching •
- Stone • RR Ties • Pavers • Sod

~ SPRING/FALL CLEAN-UPS ~

FREE ESTIMATES

**20% OFF ALL NEW
LANDSCAPING DESIGNS**
751-0588

SHOCKED BY HIGH WINDOW PRICES?

Don't buy ANY replacement windows until you get my price!
Deal direct with owner. No salesman's commission. NO pressure. NO gimmicks.
Additional \$25.00 OFF WINTER SALE on every window & door.
\$100 OFF on Every Window and Door.
TOP QUALITY hermetically sealed vinyl windows in over
100,000 N.J. installations. Free estimates. Life time guarantee. Low prices. EXPERT
one-day No mess installations. Custom built to size.

TRUE THERMAL WINDOW CO., INC.

BILL KEARNEY

201-763-7672 or 1-800-696-2061

Fully Insured

Licensed

BEDROCK STONE RECYCLING

411 Bergen Ave., Kearny

997-0220201-680-8862
Bloomfield, NJ

STEVE'S ODD JOB SERVICE

Painting To Yard Work

No Job To Big Or Small
RELIABLE

FREE ESTIMATES



NICK'S LANDSCAPING

Residential • Commercial • Industrial

Spring Clean-Up • Railroad tie • Walls •

• Rock Walls • Patios • Walkways

Complete Lawn Maintenance

~ Free Estimates ~

429-8204

Nick Fiora Scente • 8 Clinton Rd. Bloomfield

St. Mary's Sunday school registration

Registration for Roman
Catholic education classes for public
school students will be held at
St. Mary's School, 9-10:15 a.m. on
Sundays, April 17 and 24, and
May 1.The classes now include kinder-
garten as well as grades 1-8, from
September to May on Sundays,
8:45-10:10 a.m.For more information, call the
Religious Education office of St.
Mary's Church between 9 a.m. and
2 p.m. at 667-8239.

TOWN OF BELLEVILLE PUBLIC HEARING

Public Notice is hereby
given that an Open Public
Hearing will take place for
the proposal and approval
of the Year Three
Neighborhood Preservation
Work Program. All
residents of the Target
Area are invited to attend.
The meeting will take place
on Monday, April 18, 1994
at the Silver Lake Moose
Hall on the Corner of
Honiss and Eugene Place at
7:00 P.M. Copies of the
Year Three Work Program
will be available at
Belleville Clerk's Office.
For further information
call the Neighborhood
Preservation at 450-3398.Robert Shumeyko
NPP CoordinatorBelleville Times
April 7, 1994

Fee: \$9.87

No. B94-149

NOTICE TO ABSENT DEFENDANTS (L.S.) STATE OF NEW JERSEY TO

Trevor Willis and Cynthia
Willis, his wifeYOU ARE HEREBY
SUMMONED AND

REQUIRED to serve upon

FEDERMAN AND PHE-

LAN, P.C., plaintiff's attor-

ney whose address is Suite

505, SENTRY Office Plaza, 216

Haddon Avenue, Westmont,

New Jersey 08108, an answer

to the Complaint filed in a

civil action, in which Mar-

tyland National Mortgage

Corporation is plaintiff and

Trevor Willis, et ux., et als.

are defendants pending in

the Superior Court of New

Jersey, Chancery Division,

Essex County and bearing

Docket No. F-8402-93 within

thirty-five (35) days after

April 7, 1994 exclusive of such

date. If you fail to do so,

judgment by default may be

rendered against you for the

relief demanded in the Com-

plaint. You shall file your

answer and proof of service

in duplicate with the Clerk of

the Superior Court of New

Jersey, Hughes Justice Com-

plex, CN-971, 24 Market

Street, Trenton, New Jersey

08625, in accordance with

the rules of civil practice and

procedure.

This action has been

instituted for the purpose of

(1) foreclosing a mortgage

dated July 20, 1989 made by

Trevor Willis and Glasmin

Willis as mortgagors and

given to E.B. Mortgage Cor-

poration which was recorded

on September 11, 1989 in

book 5756 of Essex County,

page 295. E.B. Mortgage Cor-

poration is now known as

Maryland National

Mortgage Corporation, the

plaintiff herein; and (2) to

recover possession of and

concerns premises common-

ly known as 113 19th Avenue,

Irvington, NJ.

If you are unable to obtain

an attorney you may com-

municate with the New Jer-

sey State Bar Association by

calling 800-852-0127. You

may also contact the Lawyer

Referral Service of the County

of venue by calling 201-662-

6207. If you cannot afford an

attorney, you may communi-

cate with the Legal Services

office of the county of venue

by calling 201-622-1513.

YOU, Trevor Willis, are

named as a party defendant

to this foreclosure action for

any lien, claim or interest you

may have in, to or on the

mortgaged premises because

you are the record owner of

the mortgaged premises,

because you executed the

bond and mortgage being

foreclosed herein and may

be liable for any deficiency

thereon.

YOU, Cynthia Willis are

named as a party defendant

to this foreclosure action for

any lien, claim or interest you

may have in, to or on the

mortgaged premises because

you are the wife of Trevor

Willis.

DONALD F. PHELAN,

Clerk

Superior Court

of New Jersey

Belleville Times

April 7, 1994

Fee: \$35.25

No. B94-147

CALL: 667-3000 TO HAVE YOUR BUSINESS CARD INCLUDED EACH MONTH

Helen Thomas, 98

Mrs. Helen Sloss Thomas, 98, of Belleville died October 4 in Clara Maass Medical Center, Belleville.

Funeral services were conducted at the Fewsmith Memorial Presbyterian Church, Belleville.

Thomas was a graduate of Newark State Normal School, Newark. (Now Kean College, Union). She taught for 35 years at the Summer Avenue School, Newark.

She and her late husband, Alexander R. Thomas were charter members of the Fewsmith Memorial Presbyterian Church. She was also a member of the Essex County Educators Association and the Belleville Chapter of AARP.

Mrs. Thomas was born in Newark and moved to Belleville in 1922.

There were no immediate survivors.

Celia Casiere, 80

A Mass for Mrs. Celia Casiere, 80, of Nutley was offered yesterday (April 6) in the St. Thomas the Apostle Church, Bloomfield, following the funeral from the S.W. Brown & Son Funeral Home, Nutley.

Mrs. Casiere died April 2 in the Clara Maass Medical Center, Belleville.

She was a member of the

Belleville Senior Monday Club.

Born in Newark, she lived in Nutley for 30 years.

Surviving are her husband, Thomas J.; a daughter, Mrs. Cecelia Battaglino; three sisters, Mrs. Teresa Zrinski, Mrs. Nancy Orfino and Mrs. Mary Wilson, and three brothers, Frank, Joseph and Albert Canarelli.

Afterschool slate inviting local students

The Afterschool Program at the Franklin Reformed Church of Nutley is pleased to announce that they are now able to extend their program to include children from several Belleville schools.

A pilot program successfully began this year to include children from schools #5, 7 and 9. These schools were selected because of their proximity to the Nutley schools, according to Franklin officials.

The state-licensed program has been running for nearly a decade and includes a kindergarten program from 11:30 a.m. until 6 p.m., and an afternoon program for children grades one through six.

Children are provided with a snack, have certified teacher assistance with homework, and are provided time for outdoor activities, along with gym time and crafts.

The afterschool program also runs a full-day, eight-week summer program. This includes swimming, roller skating, a kid-fit program, a kid's chorus, field trips, and a wide variety of other activities.

Registration is now open by calling 667-7055 or 667-2936 in the evenings.

Obituaries

Vito San Giacomo, 76

Vito San Giacomo, 76, of Belleville died March 28 in the Chilton Memorial Hospital, Pompton Plains.

A Blessing was offered March 31 in St. Peter's Church, Belleville, after the funeral from the Kiernan Funeral Home, Belleville. Burial was in Holy Cross Cemetery, North

Arlington.

Mr. San Giacomo was a long-shoreman for Worldwide Volkswagen of Newark for 40 years, retiring in 1976.

Born in Newark, he moved to Belleville 33 years ago.

Surviving are a son, Michael J., and a grandchild.

Leonard Hicken Jr., 64

Leonard Hicken Jr., 64, formerly of Belleville, died April 4 after a long illness. He died in his Flanders home where he and his wife Marilyn (Schoeber) have lived for the past nine years.

Arrangements are being handled by Davis and Heppelwaite Funeral Home of Succasunna.

In lieu of flowers, please send contributions to Hospice of Morris County or Morris County Chapter of the Cancer Society.

Surviving are his wife, Marilyn; a son, Gary; a daughter, Lynda, and his parents, Leonard Hicken Sr. and Joanna Hicken, and two grandsons.

John Carell, 70

John S. Carell, 70, of Belleville died April 4 at Clara Maass Medical Center, Belleville.

The funeral service is today at 10 a.m. at the S.W. Brown & Son Funeral Home, Nutley. Interment in Glendale Cemetery, Bloomfield.

He was a bridge-tender for

Essex County for 13 years, retiring 15 years ago.

He had been an Army veteran of World War II.

He was born in Newark and moved to Belleville 36 years ago.

Surviving is a daughter, Rosalie Melillo.

Craft workshops offered

The Essex County Department of Parks, Recreation and Cultural Affairs and the First Mountain Crafters of Riker Hill Art Park will offer a series of craft workshops starting on Monday, April 11, at the Riker Hill Art Park Gallery, located off Eisenhower Parkway and Beaufort Avenue, Livingston.

The First Mountain Crafters have developed a package of craft workshops designed for adults and

a special series for youth. All workshops should be of interest to beginner and experienced crafters and will be taught by some of the top crafters in the state.

Adult workshops include stained glass, knotted jewelry, basic photography, weaving, papermaking and a special workshop for crafters called "Left Brain - Right Brain." The children's workshop are decorative papermaking collage, weaving, basket-weaving and jewelry-making.

Instructors for the workshops will be Martin Hillinger, glass; Sarah Wells, jewelry; Pat Gaby, photography; Lois Macknik, weaving; Barbara Maxwell, basket-weaving; Denise Held, papermaking; Sandra Zuckerman, jewelry; and Joan Wynne who will be teaching both collage and the challenging "Left Brain - Right Brain" workshops.

All classes are self-supporting and a fee is charged for each. For the starting date and fee for each workshop, call Lois Macknik at (908) 236-9556.

Volunteers sought

The North Central Regional Chapter of the American Diabetes Association needs volunteers for its Walktoberfest 1994 Committee.

Plans are already underway to get this walk-a-thon on its feet this October in Essex County. The event will raise money to support education and research for 460,000 New Jersey residents who have diabetes.

Interested persons may call Karen at 908-388-4733 for more information.

SUPPORT RESEARCH.

It Works Wonders.

American Heart Association

IRVINE

Cozzarelli Memorial Home

Established 1885

IN YOUR TIME OF NEED
"A Family Name You Can Trust"



James J. Cozzarelli Jr. • Owner / Manager

276 Washington Ave. Belleville, NJ • 759-1114

Gladys Place, 67

Mrs. Gladys H. Place of Belleville died April 2 in Clara Maass Medical Center, Belleville.

The funeral service was April 6 at the S.W. Brown & Son Funeral Home, Nutley.

Mrs. Place was born in Newark

and moved to Belleville 40 years ago.

She is survived by two sons, Kenneth and Robert; a daughter, Karen Place; two brothers, Walter and Harold Widman; and two grandchildren.

Clara Maass sponsors mother-baby nursing

Clara Maass Health System, Inc. is sponsoring a one-day conference that will examine important aspects of planning and implementing mother-baby nursing.

"Family Focused Models: Mother-Baby Nursing" will be held on Monday, April 18 from 8 a.m. to 4 p.m. at Mayfair Farms in West Orange.

The conference will provide a comprehensive look into the reality of family and their individual needs.

Issues that will be addressed include planning and implementing a Family Focused Model and its relationship to maternal/child health care reform. The myths sur-

rounding mother-baby nursing will be replaced with the reality of day-to-day practice, according to officials.

Early registration is advised by calling Joanne Simonetti or Susan Brito at 450-2259 or Thelma Toomey at 450-2929. times 7-9 fill

Cancer screenings Saturday

Clara Maass Health System, Inc. in Belleville and the Belleville Health Department will conduct two free cancer screenings at the medical center, 1 Franklin Ave., on Saturday, April 9 from 9 a.m. to 1 p.m.

They will include a prostate cancer screening for men over 50 years and a pap smear screening for women.

Appointments are necessary and availability is limited.

For more information, registration and eligibility requirements, call 450-2213.

Church planning rummage sale

Bethany Lutheran Church will hold a Rummage Sale from 7 to 9 p.m. on Thursday, April 14th.

The church, at the corner of Joralemon and New Streets, will also conduct a Bag Sale on Friday, April 15th, from 10 a.m. to 2 p.m.

MEETING TOMORROW'S CHALLENGES TODAY

The men and women in the Navy's Seaman/Airman/Fireman Program are working for America, while learning valuable skills through on-the-job training. They're building solid futures, succeeding in a competitive, high-tech world and advancing as quickly as their abilities and performance allow. Find out more about the Seaman/Airman/Fireman Program, as well as other exciting Navy job opportunities, from your local Navy recruiter. This ad is brought to you as a public service of this newspaper.

Navy. Full Speed Ahead.

PROFESSIONALLY SPEAKING

• The Nutley Sun • Belleville Times • Bloomfield Life

Chiropractors

DR. RALPH J. DI MAIO

CHIROPRACTOR

Serving your community for over 15 years

Most insurances provide coverage

751-8805

CHRISTIAN B. HELM, D.C.
Chiropractic Physician

Diplomate National Board of Chiropractic Examiners

Specializing in the treatment and care of low back conditions

199 Broad St. Suite 1 C
Bloomfield 748-1601

Attorneys

SULLIVAN & MANISCALCO, P.C.

Attorneys & Counsellors At Law

Personal Injury
Estate Planning & Administration
Real Estate

345 Centre St., Nutley, N.J. 07110
Phone (201)235-1900 Fax (201)235-1992

John P. Sullivan, Esq.
Mark C. Maniscalco, Esq.

TO ADVERTISE YOUR BUSINESS HERE

CALL

667-2100

Pharmacy Footnotes



Vincent Cozzarelli
Reg. Ph.

BARKING UP THE RIGHT TREE

With the relatively recent FDA approval of the drug paclitaxel, women suffering from advanced stages of ovarian cancer have been able to avail themselves of an effective new treatment option. Each year, 21,000 American women are diagnosed with ovarian cancer, 13,000 of whom die of the disease. Paclitaxel, which is derived from the bark of the rare Pacific yew tree, proved itself able to reduce tumor size by at least half in 20 to 30 percent of the patients studied in clinical trials. The FDA responded to these significant results by approving paclitaxel in a record five months. It is considered an important second-stage medication for ovarian cancer because although most patients respond to chemotherapy initially, the disease often recurs.

Your needs are important to us. For friendly, helpful service, visit ROSSMORE PHARMACY, 338 Washington Avenue, 759-1968, 759-1956. We also handle the sale and rental of convalescent aids including walkers, wheel chairs, crutches, and canes. Open: 9am-10pm daily, 9am-9pm Sundays. The American Cancer Society supports the nation's fight against cancer with an annual fund raising and education campaign April 1 thru 30th.

HINT: The side effects of paclitaxel include hair loss, decrease in white blood cells, and numbness in fingers and toes.

WORSHIP CALENDAR



CHRIST EPISCOPAL CHURCH
393 Washington Ave.,
Belleville

Sunday Services:

8:15 am, Holy Eucharist
9:00 am, Church School
10:00 am, Holy Eucharist
(w/nursery)

Everyone is Welcome!
The Rev. Carolyn Lumbard, Rector

751-0616

Nutley Assembly of God
A Church of True Faith & Abundant Life
65 Bloomfield Ave., Nutley

Sunday: 9am Sunday Bible School
All Ages
10:00am Morning Worship
Children's church provided at all services ages birth through nine
Sunday services only are held at Nutley Junior School
Thursday: 7:30pm
Revelation Knowledge Seminar
(Pastor Bruno teaching)

667-4329

VINCENT UNITED METHODIST CHURCH
100 Vincent Place, Nutley

"In The Heart Of Town"

SUNDAY WORSHIP
10:30 am
CHILDCARE PROVIDED
SUNDAY SCHOOL
FOR ALL AGES 9:15 AM
Leon F. Weaver,
Pastor

667-5440

Come, rejoice, be uplifted!
GRACE EPISCOPAL CHURCH
200 Highfield Lane, Nutley

Sundays:
8:00 am
Holy Communion
9:30 am

Family Worship with choir, Sunday School, and childcare

Real Faith For Your Real Life

235-1177

COME, SHARE, REJOICE.
PARK UNITED METHODIST CHURCH
Broad & Park Sts., Bloomfield

Sunday Worship
10:45 AM
Bible School for all ages.
9:25 AM

"Childcare & Transportation Provided"

Rev. Wayne Jack Plumstead,
Pastor

429-7745

To Have
Your Church
Listed in
our Calendar

Call:
667-3000

Especially for kids and their families

The Mini Page

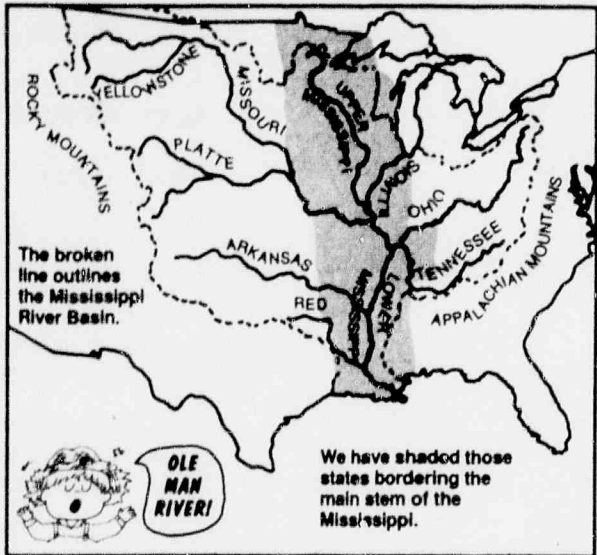
© 1994 by Universal Press Syndicate

By BETTY DEBNAM

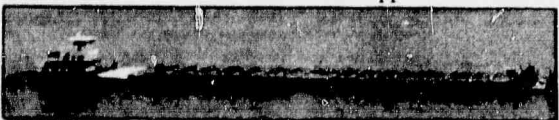


Last summer, the Mississippi and other rivers in the Midwest overflowed their banks in the great flood of 1993.

The Mississippi is:



- the longest river in the U.S. (2,348 miles).
- the chief river in North America.
- the main river of a huge drainage basin stretching between the Rocky and Appalachian mountains.
- our country's busiest inland waterway. It carries more than 60 percent of all inland freight.
- The upper Mississippi has locks and 29 dams. It is narrower than the lower Mississippi.



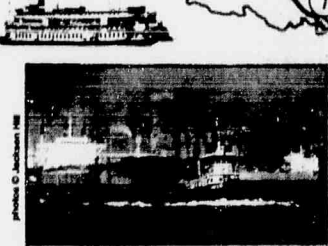
A towboat on the Mississippi.

The Mighty Mississippi

Places and faces



- 1 Lake Itasca in Minnesota is the river's source.
- 2 The Mississippi is wide and deep enough for shipping as far north as Minneapolis.
- 3 Mark Twain grew up in Hannibal, Mo. He used it as a setting for "Tom Sawyer" and "Huckleberry Finn."
- 4 St. Louis is famous for its 630-foot-high arch that overlooks the Mississippi.
- 5 Elvis Presley's home, Graceland, and jazz and blues music attract many visitors to Memphis, Tenn.
- 6 Natchez, Miss., like many cities on the river, is built on bluffs on the east side. The banks on the west are usually lower.
- 7 The New Orleans-Baton Rouge area on the Mississippi is the second busiest port in the U.S. The river breaks into channels and empties into the Gulf of Mexico 95 miles below New Orleans.



The New Orleans-Baton Rouge area on the Mississippi is the second busiest port in the U.S. The river breaks into channels and empties into the Gulf of Mexico 95 miles below New Orleans.

River Quiz-a-Roo



Try out this quiz on your family and friends. We have scrambled the answers. What river ...

- 1 ... is the second-longest river in the United States? It begins in Montana and empties into the Mississippi. It is very muddy.
ISSMOIRU
- 2 ... forms the boundary between Mexico and the United States for 1,240 miles?
IOR RADNGE
- 3 ... flows through some of our best farmland, busiest manufacturing and coal mining areas? It empties into the Mississippi at Cairo, Ill.
HIOO
- 4 ... empties into the Pacific and furnishes about one-third of all the electric power produced by water in the United States?
IALCOMBU
- 5 ... for millions of years cut through the Earth's surface to form the Grand Canyon?
OLRADOCO
- 6 ... is called the "Father of Water" and "Ole Man River"?
ISMSPIPISSI

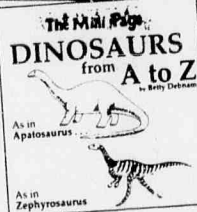
1. Missouri, 2. Rio Grande, 3. Ohio, 4. Columbia, 5. Colorado, 6. Mississippi.

The Mini Page Dinosaurs From A to Z book

- Dinosaur information from Apatosaurus to Zephyrosaurus with illustrations, descriptions, and where and when they lived.
- 56 pages of reprints of our popular dinosaur series.
- Perfect companion to The Mini Page Dinosaurs From A to Z Poster-Plus.

Send only checks or money orders payable to Andrews and McMeel. Allow 4-6 weeks for delivery. Mail to The Mini Page Dinosaur Book, P.O. Box 419242, Kansas City, MO 64141. (Bulk discount information available upon request.)

Please send:
_____ copies of The Mini Page Dinosaurs From A to Z book at \$3.95 plus \$1.00 for postage and handling each.
Total amount enclosed \$ _____
Name _____
Address _____
City _____ State _____ Zip _____



Rookie Cookie's Recipe Mississippi Mud Pie

You'll need:

- 2 squares unsweetened chocolate, melted
- 5 1/2 tablespoons butter or margarine, melted
- 1 1/4 cups sugar
- 2 eggs, beaten
- 1/4 cup evaporated milk
- 1 9-inch pie crust, unbaked

What to do:

1. Combine melted chocolate and butter or margarine in a large bowl. Mix well.
2. Add remaining ingredients for filling. Mix well.
3. Pour into pie shell.
4. Bake in a preheated, 375-degree oven for 35 minutes.



TRY 'N FIND THE NEWS HOUND'S RIVERS

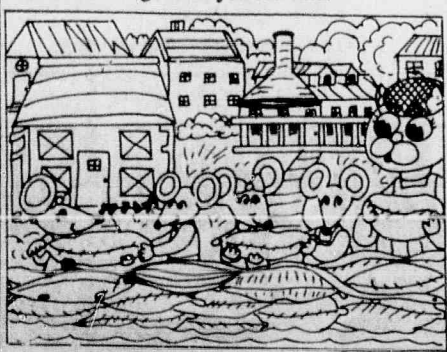
Words that remind us of the Mississippi River are hidden in the block below. Some words are hidden backward. See if you can find: TRADE, MISSISSIPPI, RIVER, TRAIN, WATER, FLOOD, STEAMBOAT, PLANTATION, BARGE, SHIP, BASIN, NEW ORLEANS, DELTA, ILLINOIS, FLOW, ARKANSAS, OHIO, LEVEE, SHORE.

DO YOU KNOW THESE RIVER WORDS?

W B A S A O Q S I O N I L L I
A A R H E D A R T L E V E E Q
T R K O C D O O L F T R A I N
E G A R N O I T A T N A L P D
R E N E D S N A E L R O W E N
O F S E S T E A M B O A T K R
H L A N I S A B R I V E R F L
I O S Q I P P I S S I S S I M
O W J M D E L T A T P I H S N

Mini Spy

Mini Spy and the Alpha Mice are sandbagging the Mississippi in case of flooding. See if you can find:



- funnel
- word MINI
- number 7
- snake
- 2 fish
- key
- banana
- ladder
- bowl
- music note
- lips
- letter V
- kite

Along the Mississippi

Barge Fact-a-Roonies

Man has done more to try to manage the Mississippi than any other body of water in the world. Hundreds of miles of the river have been straightened or changed in some way to help in flood control and shipping.

Levees

We have built levees along the Mississippi to try to keep areas from flooding. A levee is an earthwall along the banks of a river. Levees along the Mississippi can be 30 feet high.



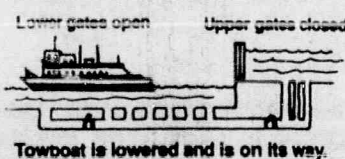
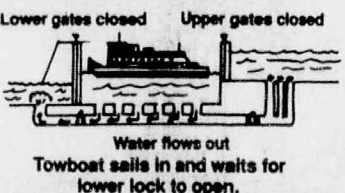
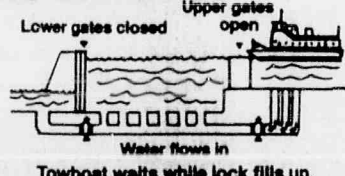
Dams

The upper Mississippi has 29 dams and locks from St. Paul, Minn., to St. Louis, Mo. The water drops a total of 420 feet along the way.

Locks

Barges must go through locks, where there is a dam or waterfall. Locks are like staircases in water.

Going downstream:



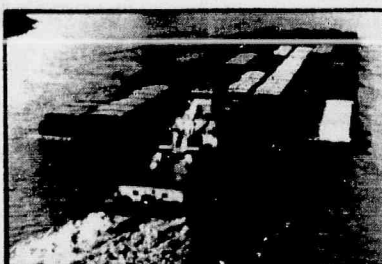
Three barges pushed by a towboat go through a lock. Locks are on the upper Mississippi.

With their flat bottoms, barges can carry their heavy, bulky loads in water that is 9 feet deep. Most barges are pushed by towboats. Most are 195 long and 35 feet wide. Some barges have their own engines.

Today, barges carry 15 percent of all freight shipped in the United States.

More than 60 percent of all that freight is carried on the Mississippi. Most of that is on the lower Mississippi, going southbound.

On the lower Mississippi, where the river is widest, a single towboat might push as many as 40 barges. This is equal to the amount of freight carried in 600 rail cars or 2,200 trucks!

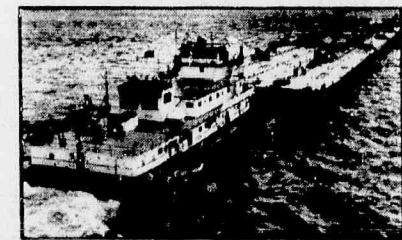


Deck barges carry spacecraft, construction equipment, oil rigs, military equipment and overseas shipping crates.

Look through your newspaper for pictures or stories about transportation.



Covered dry cargo barges carry grain and other freight that must be kept dry. This includes soybeans, corn, wheat, sugar, salt, paper products and things in packages.



Liquid cargo barges carry oil, liquid fertilizers, chemicals and orange juice. One of our largest oil refineries is at Baton Rouge, La.



Open hopper barges carry coal, steel, ore, sand, gravel and lumber.

The Mini Page thanks the U.S. Geological Survey, the U.S. Army Corps of Engineers, the American Waterways Operators, American Rivers and the Mississippi River Parkway Commission.

Next week read all about floods as the rainy season hits in some parts of our country.

THERE'S NO PLACE LIKE HOME

180 Centre St.
Nutley, N.J. 07110
667-3440

GEORGE E. MACMUNN CO.
REALTORS

100 Woodport Road
Sparta, N.J. 07871
729-8727



OPEN HOUSE-SUNDAY 1-4 PM NUTLEY

389 WALNUT ST. (Between Roosevelt & McKinley)
Tudor colonial, Immac. & tastefully done. Newer oak kit w/adj. fam. rm. & sliders to deck, 2 full mod baths, 2 extra lg. BR's. Motivated Seller.
ASKING \$199,900.



JUST LISTED - NUTLEY- ASKING \$179,900.

Spring Garden School area, stonefront cape, 4 BR's, nice size LR, DR, KIT. Many recent upgrades. Immac. move in condition. Playroom in basement for the children. Don't wait on this!!

**DO YOU KNOW
WHAT YOUR
HOUSE IS
WORTH
TODAY?**

We offer a current market
value analysis...
Just pick up the phone & call.



OPEN HOUSE-SUNDAY-1-4 PM - ASKING \$149,900.

21 ADELAIDE ST., BELLEVILLE (Above Union Ave. off Division Ave.)
3 BR's, 1 1/2 baths, Frpl, roof & siding only 2 yrs. old, 21x13 rec. rm, 1 car gar.



OPEN HOUSE -SUNDAY- 1-4PM - ASKING \$149,900.

136 SENECA LAKE RD., SPARTA (Off Stanhope Rd. or call for directions).
Lovely ranch on 150x111 level lot overlooking lake, 3 BR's, fam. rm. mod kit. Good room size, immaculate condition.

Whirlpool Corporation Wins Refrigerator Competition



The super efficient Whirlpool refrigerator looks ordinary on the outside, but represents state-of-the-art on the inside.

The Whirlpool Corporation was recently named winner of the Super Efficient Refrigerator Program (SERP). The Super Efficient Refrigerator Program, a winner-take-all competition with a \$30 million payoff, challenged U.S. appliance manufacturers to develop and produce a super-efficient, CFC-free refrigerator.

Twenty-four electric utilities formed SERP, according to the Edison Electric Institute and the National Rural Electric Cooperative Association, two national electric utility grade associations. SERP's goal: To accelerate the development of energy-efficient and environmentally friendly refrigerator/freezers and expedite their availability to consumers.

"Consumers who purchase SERP products are the real winners in this competition," says Jeff Fettig, vice president, group marketing and sales for Whirlpool's North American Appliance Group. "They'll benefit from the advanced technology, and they'll know they've helped to protect the environment. And, ultimately, they'll determine the success of the program."

SERP required entrants to develop and distribute appliances that were CFC free and at least 25 percent more energy efficient than 1993 models. Whirlpool will use the \$30 million reward to offset extraordinary design, development and marketing costs, as well as the more expensive materials and parts. As such, consumers will find SERP refrigerator prices similar to those of comparable models currently on the market.

SERP: Accelerating The Process

SERP will pay Whirlpool as refrigerators are delivered to participating SERP utility markets. The company expects to manufacture approximate-

ly 250,000 SERP refrigerators in a variety of models between 1994 and 1997, the period of the SERP program.

Whirlpool will introduce the first SERP model—a 22 cubic foot, side-by-side refrigerator/freezer—in the first quarter of 1994 to consumers in areas served by SERP utilities. They will be marketed under the Whirlpool and KitchenAid brand names, as well as under the Kenmore brand name for sale by Sears, Roebuck and Co.

"These refrigerators will have all of the latest technological advances of a SERP product and all the quality, style and convenience consumers expect from every Whirlpool-built appliance," Fettig adds. "In fact, about the only difference consumers will notice is a reduction in the size of their electric bills."

Efficiency Rating Surpasses SERP Requirements

A combination of factors, among them better insulation, a high-efficiency compressor, an improved condenser fan motor and a newly-designed adaptive defrost control which uses a microchip to record and adjust the length and frequency of defrost cycles, account for the extraordinarily high efficiency of the SERP refrigerator, according to Fettig.

"For competitive reasons, we won't be discussing the details of our new technology until the SERP refrigerator is in the marketplace," he notes. "However, I can say that these changes enabled us to meet SERP's very tough requirement that the refrigerators be at least 25 percent more efficient than units meeting 1993 federal energy standards."

No More CFCs

A rapid acceleration of technology,

FOR RENT

*Nutley Prime Location
Plenty of Free Parking*

STOREFRONT \$875 mo.

Aprox. 600 sq. ft.

3 ROOM MODERN OFFICE \$875 mo.

2nd floor aprox. 600 sq. ft.

- NO FEE -

Call:

Costantine Realty

289 Franklin Ave.

Nutley • 667-7070

ATTENTION

REAL ESTATE AGENTS

KEEP YOUR REALTOR STATUS

as a

NON - MLS PARTICIPANT

*Why pay a Referral Agency and receive
a small fee for your listings.*

COSTANTINE REALTY

is looking for Referral Agents and will pay a

50/50 SPILT

on all listings to in house Referral Agents

**Call Lou or Sue
for further details**

COSTANTINE REALTY

289 Franklin Ave., Nutley, N.J. 07110

(201) 667-7070

TWO NEW LISTINGS

129 GRANT AVE.
Unique expanded Cape with 3 bedrooms, 1 1/2 baths, large living room & dining room, with modern eat-in-kitchen, 2 rooms finished in basement.
Asking \$199,000.

29 DAILY ST.
Center Hall Colonial with 5 bedrooms, 1 full & two half baths, fireplace in living room, finished rec room.
Asking \$230,000.

ALSO

175 GRANT AVENUE
A must see at \$169,900. Your offer could get this move-in-condition 6 room home with new kitchen & bath.

EVERYONE KNOWS

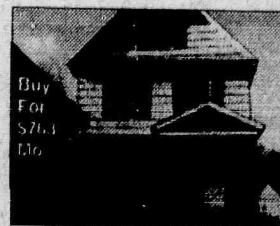
GEORGE T. BOWES

YOUR NUTLEY REALTOR SINCE 1933
681 FRANKLIN AVE. NUTLEY 667-3376

Install Smoke Detectors

...because dreams can go up in smoke.

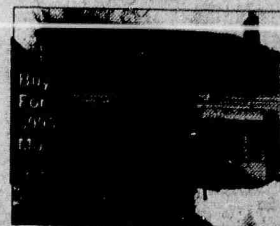
 National Safety Council



OPEN THIS SATURDAY, 1 TO 5PM!
17 STOCKTON ST. BLOOMFIELD
Large five bedroom home with family room, modern baths, & more!
\$139,900



OPEN THIS SUNDAY, 1-5PM
15 MARTIN ST. BLOOMFIELD
Nice two family with five room first floor apartment plus modern two and a half room in-law apartment!
\$182,000.



JUST REDUCED
Beautiful stone front Colonial with four bedrooms, ultra modern kitchen, a deep, park-like lot, & more!
Now \$74,900.



OPEN THIS SUNDAY, 1-5PM
8 HIGHVIEW TER., BLOOMFIELD
Intricate Brookdale Split on cul de sac bordering Upper Montclair just reduced to \$194,900!

LOOK FOR LOW MONTHLY PAYMENTS IN OUR ADP
As an example, a \$100,000 loan would have a monthly payment of \$723.00 at an APR of 7.725%. An example of a \$200,000 loan would have a monthly payment of \$1,446.00 at an APR of 7.725%. As an example, a \$300,000 loan would have a monthly payment of \$2,169.00 at an APR of 7.725%. As an example, a \$400,000 loan would have a monthly payment of \$2,892.00 at an APR of 7.725%. As an example, a \$500,000 loan would have a monthly payment of \$3,615.00 at an APR of 7.725%. As an example, a \$600,000 loan would have a monthly payment of \$4,338.00 at an APR of 7.725%. As an example, a \$700,000 loan would have a monthly payment of \$5,061.00 at an APR of 7.725%. As an example, a \$800,000 loan would have a monthly payment of \$5,784.00 at an APR of 7.725%. As an example, a \$900,000 loan would have a monthly payment of \$6,507.00 at an APR of 7.725%. As an example, a \$1,000,000 loan would have a monthly payment of \$7,230.00 at an APR of 7.725%.

Weichert Realtors
We Sell More Homes We Do More
(201) 746-1515
Upper Montclair Office

Especially for kids and their families

The Mini Page

© 1994 by Universal Press Syndicate

By BETTY DEBNAM



Last summer, the Mississippi and other rivers in the Midwest overflowed their banks in the great flood of 1993.

The Mississippi is:



- the longest river in the U.S. (2,348 miles).
- the chief river in North America.
- the main river of a huge drainage basin stretching between the Rocky and Appalachian mountains.
- our country's busiest inland waterway. It carries more than 60 percent of all inland freight.
- The upper Mississippi has locks and 29 dams. It is narrower than the lower Mississippi.



A towboat on the Mississippi.

The Mighty Mississippi

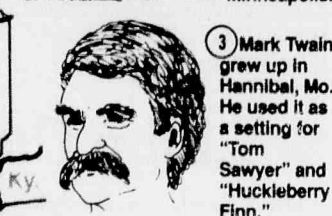
Places and faces



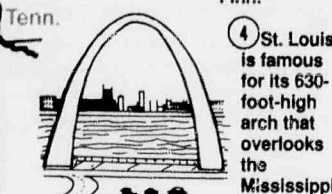
1 Lake Itasca in Minnesota is the river's source.



2 The Mississippi is wide and deep enough for shipping as far north as Minneapolis.



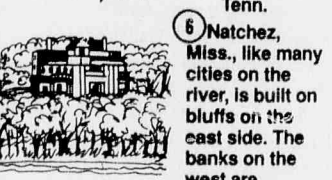
3 Mark Twain grew up in Hannibal, Mo. He used it as a setting for "Tom Sawyer" and "Huckleberry Finn."



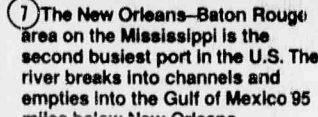
4 St. Louis is famous for its 630-foot-high arch that overlooks the Mississippi.



5 Elvis Presley's home, Graceland, and jazz and blues music attract many visitors to Memphis, Tenn.



6 Natchez, Miss., like many cities on the river, is built on bluffs on the east side. The banks on the west are usually lower.



7 The New Orleans-Baton Rouge area on the Mississippi is the second busiest port in the U.S. The river breaks into channels and empties into the Gulf of Mexico 95 miles below New Orleans.

River Quiz-a-Roo



Try out this quiz on your family and friends. We have scrambled the answers. What river ...

1. ... is the second-longest river in the United States? It begins in Montana and empties into the Mississippi. It is very muddy.

ISSMOIRU

2. ... forms the boundary between Mexico and the United States for 1,240 miles?

IOR RADNGE

3. ... flows through some of our best farmland, busiest manufacturing and coal mining areas? It empties into the Mississippi at Cairo, Ill.

HICO

4. ... empties into the Pacific and furnishes about one-third of all the electric power produced by water in the United States?

IALCOMBU

5. ... for millions of years cut through the Earth's surface to form the Grand Canyon?

OLRADOCO

6. ... is called the "Father of Water" and "Ole Man River"?

ISMSPIPISSI

1. Missouri, 2. Rio Grande, 3. Ohio, 4. Columbia, 5. Colorado, 6. Mississippi.

The Mini Page Dinosaurs From A to Z book

- Dinosaur information from Apatosaurus to Zephyrosaurus with illustrations, descriptions, and where and when they lived.
- 56 pages of reprints of our popular dinosaur series.
- Perfect companion to *The Mini Page Dinosaurs From A to Z Poster-Plus*.

Send only checks or money orders payable to Andrews and McMeel. Allow 4-6 weeks for delivery. Mail to *The Mini Page Dinosaur Book*, P.O. Box 419242, Kansas City, MO 64141. (Bulk discount information available upon request.)

Please send:
 _____ copies of *The Mini Page Dinosaurs From A to Z* book at \$3.95 plus \$1.00 for postage and handling each.
 Total amount enclosed \$ _____
 Name _____
 Address _____
 City _____ State _____ Zip _____

Rookie Cookie's Recipe Mississippi Mud Pie

You'll need:

- 2 squares unsweetened chocolate, melted
- 5 1/2 tablespoons butter or margarine, melted
- 1 1/4 cups sugar
- 2 eggs, beaten
- 1/4 cup evaporated milk
- 1 9-inch pie crust, unbaked

What to do:

1. Combine melted chocolate and butter or margarine in a large bowl. Mix well.
2. Add remaining ingredients for filling. Mix well.
3. Pour into pie shell.
4. Bake in a preheated, 375-degree oven for 35 minutes.



from The Mini Page by Betty Debnam © 1994 Universal Press Syndicate

BASSET BROWN THE NEWS HOUND'S RIVERS TRY 'N FIND

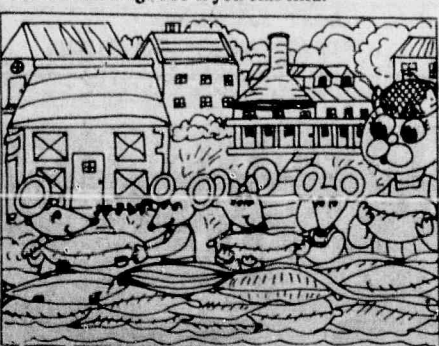
Words that remind us of the Mississippi River are hidden in the block below. Some words are hidden backward. See if you can find: TRADE, MISSISSIPPI, RIVER, TRAIN, WATER, FLOOD, STEAMBOAT, PLANTATION, BARGE, SHIP, BASIN, NEW ORLEANS, DELTA, ILLINOIS, FLOW, ARKANSAS, OHIO, LEVEE, SHORE.

DO YOU KNOW THESE RIVER WORDS?

WBASAOQS IONILLI
 AARHEDARTLEVEEQ
 TRKOCDOOLFTRAIN
 EGARNOITATNALPD
 RENEDSNAELROWEN
 OFSESTEAMBOATKR
 HLANISABRIVERFL
 IOSQIPPISSISSIM
 OWJMDELTATPIHSN

Mini Spy ...

Mini Spy and the Alpha Mice are sandbagging the Mississippi in case of flooding. See if you can find:



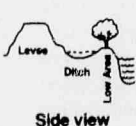
- funnel
- word MINI
- number 7
- snake
- 2 fish
- key
- banana
- ladder
- bowl
- music note
- lips
- letter V
- kite

Along the Mississippi Barge Fact-a-Roonies

Man has done more to try to manage the Mississippi than any other body of water in the world. Hundreds of miles of the river have been straightened or changed in some way to help in flood control and shipping.

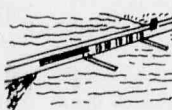
Levees

We have built levees along the Mississippi to try to keep areas from flooding. A levee is an earthwall along the banks of a river. Levees along the Mississippi can be 30 feet high.



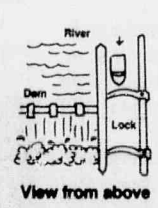
Dams

The upper Mississippi has 29 dams and locks from St. Paul, Minn., to St. Louis, Mo. The water drops a total of 420 feet along the way.

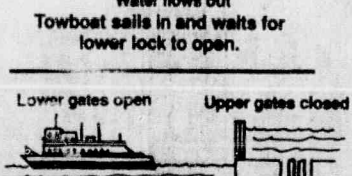
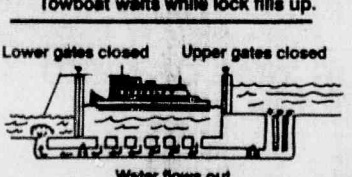
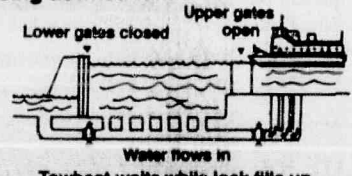


Locks

Barges must go through locks, where there is a dam or waterfall. Locks are like staircases in water.



Going downstream:



Three barges pushed by a towboat go through a lock. Locks are on the upper Mississippi.

With their flat bottoms, barges can carry their heavy, bulky loads in water that is 9 feet deep. Most barges are pushed by towboats. Most are 195 long and 35 feet wide. Some barges have their own engines.

Today, barges carry 15 percent of all freight shipped in the United States.

More than 60 percent of all that freight is carried on the Mississippi. Most of that is on the lower Mississippi, going southbound.

On the lower Mississippi, where the river is widest, a single towboat might push as many as 40 barges. This is equal to the amount of freight carried in 600 rail cars or 2,200 trucks!



Deck barges carry spacecraft, construction equipment, oil rigs, military equipment and overseas shipping crates.

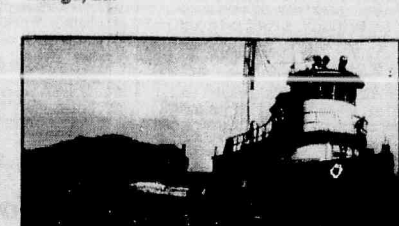
Look through your newspaper for pictures or stories about transportation.



Covered dry cargo barges carry grain and other freight that must be kept dry. This includes soybeans, corn, wheat, sugar, salt, paper products and things in packages.



Liquid cargo barges carry oil, liquid fertilizers, chemicals and orange juice. One of our largest oil refineries is at Baton Rouge, La.



Open hopper barges carry coal, steel, ore, sand, gravel and lumber.

The Mini Page thanks the U.S. Geological Survey, the U.S. Army Corps of Engineers, the American Waterways Operators, American Rivers and the Mississippi River Parkway Commission.

Next week read all about floods as the rainy season hits in some parts of our country.

THERE'S NO PLACE LIKE HOME

180 Centre St.
Nutley, N.J. 07110
667-3440

GEORGE E. MACMUNN CO.
REALTORS

100 Woodport Road
Sparta, N.J. 07871
729-8727



OPEN HOUSE-SUNDAY 1-4 PM NUTLEY
389 WALNUT ST. (Between Roosevelt & McKinley)
Tudor colonial, immac. & tastefully done. Newer oak kit w/adjoining fam. rm. & sliders to deck, 2 full mod baths, 2 extra lg. BR's. Motivated Seller.
ASKING \$199,900.



JUST LISTED - NUTLEY- ASKING \$179,900.
Spring Garden School area, stonefront cape, 4 BR's, nice size LR, DR, KIT. Many recent upgrades. Immac. move in condition. Playroom in basement for the children. Don't wait on this!!

**DO YOU KNOW
WHAT YOUR
HOUSE IS
WORTH
TODAY?**

We offer a current market
value analysis...
Just pick up the phone & call.



REALTOR

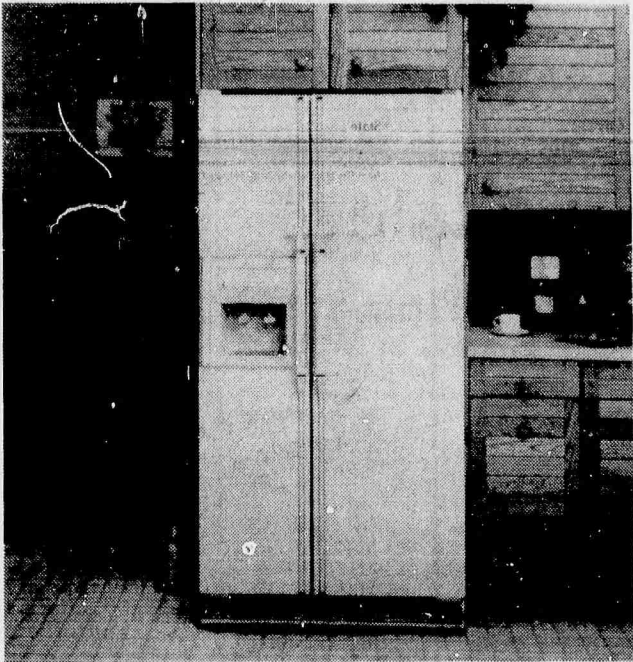


OPEN HOUSE-SUNDAY-1-4 PM - ASKING \$149,900.
21 ADELAIDE ST., BELLEVILLE (Above Union Ave. off Division Ave.)
3 BR's, 1 1/2 baths, Frpl, roof & siding only 2 yrs. old, 21x13 rec. rm, 1 car gar.



OPEN HOUSE-SUNDAY- 1-4PM - ASKING \$149,900.
136 SENECA LAKE RD., SPARTA (Off Stanhope Rd. or call for directions)
Lovely ranch on 150x111 level lot overlooking lake, 3 BR's, fam. rm. mod kit. Gond room size, immaculate condition.

Whirlpool Corporation Wins Refrigerator Competition



The super efficient Whirlpool refrigerator looks ordinary on the outside, but represents state-of-the-art on the inside.

The Whirlpool Corporation was recently named winner of the Super Efficient Refrigerator Program (SERP). The Super Efficient Refrigerator Program, a winner-take-all competition with a \$30 million payoff, challenged U.S. appliance manufacturers to develop and produce a super-efficient, CFC-free refrigerator.

Twenty-four electric utilities formed SERP, according to the Edison Electric Institute and the National Rural Electric Cooperative Association, two national electric utility grade associations. SERP's goal: To accelerate the development of energy-efficient and environmentally friendly refrigerator/freezers and expedite their availability to consumers.

"Consumers who purchase SERP products are the real winners in this competition," says Jeff Fetting, vice president, group marketing and sales for Whirlpool's North American Appliance Group. "They'll benefit from the advanced technology, and they'll know they've helped to protect the environment. And, ultimately, they'll determine the success of the program."

SERP required entrants to develop and distribute appliances that were CFC free and at least 25 percent more energy efficient than 1993 models. Whirlpool will use the \$30 million reward to offset extraordinary design, development and marketing costs, as well as the more expensive materials and parts. As such, consumers will find SERP refrigerator prices similar to those of comparable models currently on the market.

SERP: Accelerating The Process
SERP will pay Whirlpool as refrigerators are delivered to participating SERP utility markets. The company expects to manufacture approximate-

ly 250,000 SERP refrigerators in a variety of models between 1994 and 1997, the period of the SERP program.

Whirlpool will introduce the first SERP model—a 22 cubic foot, side-by-side refrigerator/freezer—in the first quarter of 1994 to consumers in areas served by SERP utilities. They will be marketed under the Whirlpool and KitchenAid brand names, as well as under the Kenmore brand name for sale by Sears, Roebuck and Co.

"These refrigerators will have all of the latest technological advances of a SERP product and all the quality, style and convenience consumers expect from every Whirlpool-built appliance," Fetting adds. "In fact, about the only difference consumers will notice is a reduction in the size of their electric bills."

Efficiency Rating Surpasses SERP Requirements

A combination of factors, among them better insulation, a high-efficiency compressor, an improved condenser fan motor and a newly-designed adaptive defrost control which uses a microchip to record and adjust the length and frequency of defrost cycles, account for the extraordinarily high efficiency of the SERP refrigerator, according to Fetting.

"For competitive reasons, we won't be discussing the details of our new technology until the SERP refrigerator is in the marketplace," he notes. "However, I can say that these changes enabled us to meet SERP's very tough requirement that the refrigerators be at least 25 percent more efficient than units meeting 1993 federal energy standards."

No More CFCs

A rapid acceleration of technology,

FOR RENT

Nutley Prime Location
Plenty of Free Parking

STOREFRONT \$875 mo.

Aprox. 600 sq. ft.

3 ROOM MODERN OFFICE \$875 mo.

2nd floor aprox. 600 sq. ft.

- NO FEE -

Call:

Costantine Realty

289 Franklin Ave.

Nutley • 667-7070

ATTENTION

REAL ESTATE AGENTS

KEEP YOUR REALTOR STATUS

as a

NON - MLS PARTICIPANT

Why pay a Referral Agency and receive
a small fee for your listings.

COSTANTINE REALTY

is looking for Referral Agents and will pay a

50/50 SPILT

on all listings to in house Referral Agents

Call Lou or Sue
for further details

COSTANTINE REALTY

289 Franklin Ave. Nutley, N.J. 07110

(201) 667-7070

TWO NEW LISTINGS

129 GRANT AVE.

Unique expanded Cape with 3 bedrooms, 1 1/2 baths, large living room & dining room, with modern eat-in-kitchen, 2 rooms finished in basement.
Asking \$189,000.

29 DAILY ST.

Center Hall Colonial with 5 bedrooms, 1 full & two half baths, fireplace in living room, finished rec room.
Asking \$230,000.

ALSO

175 GRANT AVENUE

A must see at \$169,900. Your offer could get this move-in-condition 6 room home with new kitchen & bath.

EVERYONE KNOWS

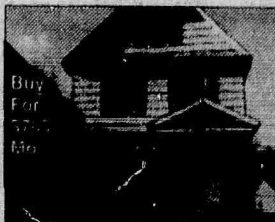
GEORGE T. BOWIES

YOUR NUTLEY REALTOR SINCE 1933
681 FRANKLIN AVE. NUTLEY 667-3376

Install Smoke Detectors

...because dreams can go up in smoke.

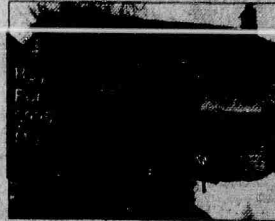
National Safety Council



OPEN THIS SATURDAY, 1 TO 5PM!
17 STOCKTON ST. BLOOMFIELD
Large five bedroom home with family room, modern baths, & more!
\$139,900



OPEN THIS SUNDAY, 1-5PM
15 MARTIN ST. BLOOMFIELD
Nice two family with live room first floor apartment plus modern two and a half room in-law apartment
\$182,000



JUST REDUCED
Beautiful stone front Colonial with four bedrooms, ultra modern kitchen, a deep, park-like lot, & more!
Now \$179,900.



OPEN THIS SUNDAY, 1-5PM
8 NIGHTVIEW TER. BLOOMFIELD
Immaculate Brookside Split on cul de sac bordering Upper Montclair just reduced to
\$249,900

WEICHERT
REALTY
We Sell More Homes Than Anyone
(201) 746-1515
Upper Montclair Office

THE CLASSIFIEDS:

A World Of Opportunity In A Nutshell!



HOURS:
Monday - Friday
9:00a/m-5:00pm

CALL:
667-3000

All Classified Ads appear automatically in all three of our papers: The Nutley Sun, Belleville Times, Bloomfield Life.

Transient Ads-Paid In Advance

First 4 lines. \$16.91
Each Additional Line . . \$1.52
Borders Are Available
For a Fee of \$5.00
Contract Rates Available



Are Accepted

CALL TODAY
667-3000

Check your Ad the first day of publication

CREDITS:
Credits & adjustments are to be made only for errors which significantly alter the effectiveness of the ad, such as a wrong telephone number or price. Credits will not be issued for typographical errors or misspelled words. The newspapers can assume responsibility only for MAJOR errors in the first day's publication.

Classified Deadline Tuesday 12 Noon

Name _____

Address _____

Phone _____

Category _____

☐ Border \$5.00 Additional

Run Date _____ Number of Insertions _____

☐ Check _____ Visa M/C No. _____

PARTS ACCESSORIES SERVICES

ATTENTION! AUTO PARTS

WILL PAY CASH FOR ANY JUNK CAR IN ANY CONDITION

Highest prices paid for late models

USED CARS & TRUCKS

991-4246 or 991-0081

USED PARTS 54 Stover Ave. Kearny USED PARTS

AUTO SALES

1979 MGB ROADSTER
Red, 77K, excellent mechanics. Upgraded parts. Weber carb, new tires & brackets 185/70. Alloy MGB racing wheels, leather steering wheel.
*New Sheet Metal
*New Paint
*New Interior
*NEW CAR!!!
\$5700.00 FIRM
235-9191

AUTOS WANTED

"CASH PAID" ANY CAR, ANY TRUCK OR MOTORCYCLE CALL ANYTIME
201-667-3277 OR BEEPER 201-708-3810

RECIPES

GREAT FOODS BY CREATIVE COOKING
4 books/set. Desserts, Pasta, Poultry, Seafoods. Over 2,000 easy to follow recipes. Send \$9.95/set to: M.M.C.
633 Franklin Ave. Suite 263 Nutley, NJ 07110

STOCKS

JUNK CARS WANTED
*Free Tow-Away
*Same Day Pick-Up (In Most Cases)
S.O.S. TOWING
955-8440 Bloomfield
481-2810 Newark

SCANDINAVIAN

SWEDISH STUDENT, interested in sports & computers. Other Scandinavian, European Japanese High School students arriving August.

Call KATHLEEN
1 (808) 386-3346 OR
1-800-SIBLING

HEALTH & FITNESS

Lose 12 lbs. in 7 days
The 10 hr wafer diet. Send \$1.00 & a lg. Self Addressed Stamped Envelope for sample & info pack.
Natures Secret
PO Box 664
Belleville, NJ 07109

PERSONAL NOTICES

ADOPTON Open if you desire? Mom works at home, near seashore, one block from school, enjoy fishing, swimming, traveling, gardening, music, dancing.
Diane/Gregg
1-800-706-7696

FREE PERSONALITY TEST
Your personality determines your happiness. Know Why? Call 1-800-334- LIFE

LONELY?
Exciting singles waiting. Get private home numbers 1-900-267-0006 x264. 18+ \$2.49/min. Jandr, 1970 N. Leslie, Pahrump, NV 89041

CHILD CARE

Exp'd loving F/T babysitter needed to care for 4 mo. old in Nutley home. Refs a must. Start 5/31. Call Karen 661-4672

NANNY D'S INFANT CARE CENTER
Full Day Sessions
6 Weeks to 2 Yrs Old
204 Washington Avenue
Belleville 759-1334
Director: Dolores Ann

P/T Babysitter for infant, week-days. 16-18 hrs/wk. Reliable, mature, exp a plus. Call 667-0193

BABY SITTING SERVICES

LOTS OF LOVE!!
Is what I have to offer your child. Mature mother of 3, nanna of 2 will watch your child in my Clifton home. Weekends, days or evenings. Flexible hours, reasonable rates. Call Margaret at 777-1495

EMPLOYMENT WANTED

Certified Home Health Aide seeks private duty to care for the elderly or ill. 759-3464

GENERAL OPPORS.

\$200-\$500 weekly.
Assemble products in your free time. Easy! No selling. You're paid direct. Fully guaranteed. No exp. nec.
Call 1-618-998-8025 ext. H1771 24 hrs. (Directory Offer)

93 newspapers reaching 1.2 million readers! Your classified ad can be included in SCAN - New Jersey's Statewide Classified Ad Network. All it takes is \$219 and one easy phone call. Phone: 667-3000 - Michelle, for all the details

Administrative Asst. Sm. prof. organization seeks person proficient with WordPerfect 5.1 & exc. office skills. \$23K. Send resume to: Simple Assoc. 653 Franklin Ave, Nutley, NJ 07110

ALL PHASE EMPLOYMENT SERVICE
382 Franklin Ave. Nutley, N.J. 661-W-O-R-K 997-W-O-R-K
Permanent & Temporary F/T & P/T positions

ATTENTION!!
Active office seeks ambitious, motivated, professional, licensed (or newly licensed) Real Estate Agents for immediate income from rentals while waiting for sales commissions. FT/PT. Call J-J at 450-8500

ATTENTION!!
Active office seeks ambitious, motivated, professional, licensed (or newly licensed) Real Estate Agents for immediate income from rentals while waiting for sales commissions. FT/PT. Call J-J at 450-8500

ATTENTION!!
Active office seeks ambitious, motivated, professional, licensed (or newly licensed) Real Estate Agents for immediate income from rentals while waiting for sales commissions. FT/PT. Call J-J at 450-8500

ATTENTION!!
Active office seeks ambitious, motivated, professional, licensed (or newly licensed) Real Estate Agents for immediate income from rentals while waiting for sales commissions. FT/PT. Call J-J at 450-8500

ATTENTION!!
Active office seeks ambitious, motivated, professional, licensed (or newly licensed) Real Estate Agents for immediate income from rentals while waiting for sales commissions. FT/PT. Call J-J at 450-8500

ATTENTION!!
Active office seeks ambitious, motivated, professional, licensed (or newly licensed) Real Estate Agents for immediate income from rentals while waiting for sales commissions. FT/PT. Call J-J at 450-8500

GENERAL OPPORS.

BANKING

TELLERS PART TIME
Can Be The Right Time For You
At Ramapo Bank our Tellers receive an outstanding benefits package that includes 401K plan, paid vacation, discounted bank services, free checking and savings accounts as well as tuition assistance.

We need Tellers who are organized, detail-oriented, possess good interpersonal skills and has flair for figures. We prefer Teller experience but will consider prior cash handling experience. Position available at:

6 MAIN AVENUE CLIFTON
(on Nutley border)
HOURS: Mon to Wed 1:45pm - 6:30pm
FRI, 1:45pm - 7:30pm
Every SAT, 8:30am-12:30pm

Contact: Pam Tipper
201-667-3548
Ramapo Financial Corp.
Equal Oppty Employer M/F/H/V

BILLING CLERK- Excl typist some bookkeeping exp. helpful. Call 998-2766

BOOKKEEPER/ASST
Mfg co seeks accurate & dependable indiv to manage accounts rcvbl on computer sys. Must have capability to make credit limit decisions, update account terms & call delinquent accounts for payment. Join pleasant staff of 12 in new offices. Full bnfts, salary open. Please call 201-589-5907 & leave a brief message describing your skills.

DRIVER- for Limo Co. Bloomfield area. Clean driving record. 680-9455

Drivers Owner/operators/fleet
owners needed for 48 state all conv. van/flatbed operation. Tractor purchase avail. ATS 1-800-498-6492 Dept. B-12

DRIVERS-New OTR and Northeast short-haul opportunities:
No slip seating, excellent pay/benefits, home weekly in short-haul. Call anytime - Burlington Motor Carriers: 1-800-JOIN-BMC. EOE

DRIVERS:
Come for the Money, Stay for the Stability. J.B. Hunt, on of America's largest and most successful transportation companies, pays its drivers some of the best salaries in the business. Inexperienced drivers call: 1-800-845-2197 Experienced drivers call: 1-800-368-8538 J.B. Hunt The Best Run For The Money. EOE Subject to Drug Screen

DRIVERS: Top opportunities for owner operators in three fleets. Relocation Services. Blanketwrap & High Value Products. Outstanding tractor purchase programs avail. Ask about RSD performance compensation - Earn up to 6% more. Tuition-free training for inexp. drivers. North American Van Lines 1-800-348-2147 Dept. EE-24

Earn up to \$700 weekly.
No experience. Own hours. PT or FT. Process mortgage refunds. 1-800-977-2828

Earn up to \$700 weekly.
No experience. Own hours. PT or FT. Process mortgage refunds. 1-800-977-2828

Earn up to \$700 weekly.
No experience. Own hours. PT or FT. Process mortgage refunds. 1-800-977-2828

Earn up to \$700 weekly.
No experience. Own hours. PT or FT. Process mortgage refunds. 1-800-977-2828

GENERAL OPPORS.

F/T Legal Secretary
w/experience in litigation and real estate. Word processing experience. Call Lucille at 450-9777

FIREFIGHTER JOBS
Entry level. M/F positions. Now hiring! \$11.58 to \$14.29 per hr. Paid training & bnfts. Applicants call 1-219-736-4715 Ext A2607 9am/9pm 7 days.

Housewife/Student
work from your home or sell at work. 201-997-4332

MAINTENANCE MECHANIC
Full-Time Temporary

Clara Maass Health System, Inc., a 475-bed community health-care facility located in suburban Belleville, NJ, currently has a full-time temporary position available for a Maintenance Mechanic.

Requirements include general maintenance, plumbing, electrical and refrigeration experience.

We offer a competitive salary and a pleasant work environment. Please fill out an application Monday-Thursday 9-12, at the Human Resource Department. No phone calls please.

CLARA MAASS HEALTH SYSTEM, INC.
One Franklin Ave. Belleville, NJ 07109
An EOE m/f/h/v

Recognized as a distinguished community benefit standards hospital.

Nutley law firm seeks f/t secretary. Legal exp. not req., willing to train. Excl. typing, dictaphone & telephone skills a must. Sal. comm with exp. Call Cheryl 661-0475 for interview.

Owners Operators
Home regularly. Fast competitive pay. All work compensated. Work 52 weeks. Piers, Domestic, Local, Regional, Long Haul. Fuel program available. Many tolls paid. 1-800-966-6001

Part-Time REIMBURSEMENT ANALYST
Flexible Day Hrs.

Clara Maass Health System, Inc., a 475-bed community health-care facility located in suburban Belleville, NJ, currently has a part-time position available for a Reimbursement Analyst.

Requirements include an accounting or finance major (Sophomore or Junior) with strong analytical, communication and computer skills. Must be detail-oriented with ability to work in a fast-paced environment. We offer a competitive salary and flexible day hours. Please send resume to Deborah L. Patti, Manager of Personnel Services:

CLARA MAASS HEALTH SYSTEM, INC.
One Franklin Ave. Belleville, NJ 07109
An EOE m/f/h/v

Recognized as a distinguished community benefit standards hospital.

SPACE AVAILABLE CALL:

667-3000

SPACE AVAILABLE CALL:

667-3000

GENERAL OPPORS.

Part-Time SWITCHBOARD OPERATOR
Alternating Weekends

Clara Maass Health System, Inc., a 475-bed community health-care facility located in suburban Belleville, NJ, currently has a part-time position available for a Switchboard Operator. Individual will work on alternating weekends and must have the flexibility to work weekend shifts if necessary. Requirements include knowledge of the Dimension 2000 System.

We offer a competitive salary and a pleasant work environment. Please fill out an application Monday-Thursday 9-12, at the Human Resource Department:

CLARA MAASS HEALTH SYSTEM, INC.
One Franklin Avenue Belleville, NJ 07109
An EOE m/f/h/v

Recognized as a distinguished community benefit standards hospital.

PAYROLL CLERK

Schiffenhaus Packaging Corp., a leading manufacturer of corrugated products located on the Belleville/North Newark borderline, has an immediate opening for a Payroll Clerk.

Candidate must have a minimum of 2 years ADP computerized hourly payroll exp in a manufacturing/union environment and have knowledge of payroll taxes and other withholdings along with excellent figure aptitude for calculating timecards.

Qualified candidates please send resume to: Terri Cmielewski

Schiffenhaus Industries, Inc.
2013 Mc Carter Hwy. Newark, NJ 07104
Equal Opportunity Employer M/F/H/V

PRODUCTION ASST
Mfg of custom vinyl & leather products seeks accurate & energetic indiv to process orders. Job req telephone contact with customers. Will teach our mfg process to right indiv. New offices, full bnfts, salary open. Please call 589-5907 & leave message describing your skills.

REAL ESTATE IS BEGINNING TO SOAR!! Earn While You Learn!
2-3 positions available in rapidly expanding Belleville office. If you enjoy directing the activities of others, are able to make a commitment, willing to work hard & be trained, this may be the opportunity of a lifetime for you. Call Now!! 751-7771 Century 21/Northside

Receptionist for a busy Montclair hair salon. Wed, Thurs & Fri. Exp. pref. 744-6911

RECEPTIONIST
wanted for nail & hair salon in Belleville. Flexible hours. 450-5834

RECEPTIONIST
Livingston prof. firm seeks bright assertive indiv. with top notch phone skills to handle front desk. Min 2 yrs receptionist exp. & word processing skills req. Excl. bnfts. competitive salary. Contact Jane Osborne at 201-992-9199

CLARA MAASS HEALTH SYSTEM, INC.
One Franklin Ave. Belleville, NJ 07109
An EOE m/f/h/v

Recognized as a distinguished community benefit standards hospital.

SPACE AVAILABLE CALL:

667-3000

SPACE AVAILABLE CALL:

667-3000

SPACE AVAILABLE CALL:

667-3000

GENERAL OPPORS.

SECRETARY

Bloomfield College is a 125-year old independent 4-year co-educational college committed to preparing students to function at the peak of their potential in a multi-racial, multicultural, society.

We seek a Secretary for our Student Development Division. Responsibilities include clerical and reception support to the division and its staff.

Must be able to type 60 WPM and have experience with PC's & word processing. (WordPerfect pref'd) Ability to work in high volume office is required. Excellent benefits include tuition plan.

Send letter, resume and 3 references by April 22, 1994 to: Irene Rosenzweig Director, Student Development

BLOOMFIELD COLLEGE
Bloomfield, NJ 07003
Affirmative Action/EOE

MEDICAL TRANSCRIPTION AND RECEPTION
Word processor, self starter, varied tasks, 30-35 hrs. weekly. Experience necessary. Pleasant environment, competitive salary. Please call 429-7999.

PART-TIME HELP

CASHIER - Weekends
Sat. 7 A.M. - 2 P.M. Sun. 9 A.M. - 5 P.M.
Debbie's Everything
341 Montclair Ave. No. Newark 748-7425

FINANCIAL

VISA/MASTERCARD
Guaranteed approval! Rates as low as 8.5% Bad credit, no credit, no problem. For brochure write AGS Credit, Box 5435 Albany, NY 12205

BUSINESS OPPORS.

Couples who enjoy meeting people, working together! As little as \$130. gets you started in a business of your own. We assist. Phone local Amway distributor & get the whole story. 893-9023

ESTHETICIANIST
with clientele to run your own business. All equipment supplied in cosmetic store. Low rent. Please call 748-5234

SHARK CARTILAGE
Hottest product of the 90's. As seen on CBS 60 Minutes, Readers Digest, OMNI, and Total Health Magazines. We Have It! 1-800-490-0190

INSTRUCTION

BE A RADIO ANNOUNCER
On the job training at local radio stations. Train around work schedules. No experience required. Call toll free for recording and free brochure. 1-800-345-2344

Learn to play the drums
Lessons in your home. All styles, beginners welcome. Reas. rates. Len 284-0594

ARTICLES FOR SALE

Sahasas Cruise
45 days/4 nights. Underbooked! Must sell! \$279.00 a couple. Limited tickets. 407-767-0208 X-5233 Mon-Sat, 9am-10pm.

DESKS
All Excellent Condition. Reas. 450-0958

DESKS
All Excellent Condition. Reas. 450-0958

DESKS
All Excellent Condition. Reas. 450-0958

DESKS
All Excellent Condition. Reas. 450-0958

DESKS
All Excellent Condition. Reas. 450-0958

DESKS
All Excellent Condition. Reas. 450-0958

ARTICLES FOR SALE

HOUSE SALE
Sun. Apr. 10, Noon to 4 P.M. Sofas, desks, wall units & more. Cash only. 275 Union Ave., Belleville.

Lawnmowers for sale.
Rebuilt, \$40 to \$200. Also rebuilt engines. Call 661-0551

MIKASA DINNERWARE
Service for 12, green. Still in box. Never used. CEILING FAN mauve w/light. CHANDELIER for dining room. FLOOR TILES Hunter green, never used, still in boxes. 10 to 12 boxes. EXERCISE BIKE & EXERCISE STEPPER Brand new. LG. CONFERENCE TABLE RICHARD SIMMONS PROGRAM Brand New Call for information 667-8721 Leave Message

Solo Flex Like New!
Butterfly & leg attachments incl. \$800. 661-0180

WANTED USED AIR CONDITIONERS CASH! 482-3681

WOLFF TANNING BEDS
New Commercial Home Units From \$199.00 Lamps-Lotions-Accessories Monthly payments low as \$18.00. Call Today FREE NEW Color catalog 1-800-462-915

ARTICLES WANTED

I'M BUYING TOOLS
"Old" "New" "Used" "Any Type" "Any Quantity" CALL "GENE" 696-4908 4-6 PM weekdays After 6:30 PM weekends

Licensed Gun Collector
Cash for: "Guns" "Swords" "Daggers" "Bayonets" "Military Items" Registered Appraiser CALL 783-6145

LIONEL AND OTHER TRAINS COLLECTOR
PAYS TOP PRICE CALL 201-334-8709 or 201-635-2058

***Used Filing Cabinets "Chairs" "Desks" EDELSTEIN OFFICE FURNITURE W/HE. 946 Market St. Paterson Cor. Lakeview Ave. & Rt 80 523-6153**

DINING ROOM SET
Cherry Wood \$100. GALLIEN KRUEGER 4-10 bass cabinet Excellent condition \$250. 998-7084

Gold velvet sofa w/drapes, bookcase, hanging brass lamp, 2 end tables, exercise bike & easy glider exercise machine. Excl. cond. B/O Call 673-6852/677-1537

Oak dinette set, pedestal table, 6 chairs, 2 leafs. Like new. \$500. Call 661-0760

\$450. 1930 style china closet \$150. matching buffet cabinet \$100. Twin sz box spring & mattress. Call 748-1092

Sofa, loveseat & chair. Rust velvet. Piano spinet & bench \$550. 2 Dark pine end tables. \$100. 759-0219

Garage Sales
Contents of home & garage, 1 day only. Everything priced to go. furniture, bikes, clothing, washer/dryer, refrig, micro convection oven. Sat, 4/9, 9-4pm. No early birds, 19 Columbia Ave., Nutley

Belleville INTEREST RATES ARE CLIMBING!
Own a 1 BR remodeled condo w/utills, laundry facilities, & pkgng. for under \$475 a mth. 10% down to qualified purchasers. WHY PAY RENT? *Giordano REALTY* 450-8500

BELLEVILLE-CONDO KRISTY ARMS
3 lg rms, 2nd flr. Assigned parking. \$64,900. Broker: HANCOX REALTY 667-9115

BELLEVILLE SALE OR RENT
Bridgebrook Condos 725 Joralemon Street (Off Franklin Ave.) Brick, 1 & 2 BRS, situated on 8 acres of beautiful landscaped grounds. Garage & pool incl in price. Private entrances. Low maintenance incl heat, hot water & gas. Pets O.K. VA & FHA approved. Sales \$75,000 \$105,000 Rentals \$700 - \$850 Call Marge Marren (Eves. 759-8107)

BANK FORECLOSURES
1,000 N.J. homes listed in 150 page report. Save to 50% buying bank direct. Also Pennsylvania, New York, Connecticut, Florida, Massachusetts, California, New Hampshire. 7 days, 8 am - Midnight
1-203-638-8200

Belleville
Above Union Ave.
3 BR, 1.5 bath. Colonial. Charming features incl: Stained glass windows in LR & BR, fireplace. Freshly painted ext. Asking \$139,900.
Call Tom at:
CENTURY 21
Stanford Agency
235-9000
Eves. 450-8265

BELLEVILLE
2 Fam. Buys!!
27 Lincoln Terr.
Owner Anxious!!
26 Hornblower Ave.
Must Be Seen!!
Call now for details!
D.P. LETTINI
R.E. Broker 450-8121

BELLEVILLE
NEW LISTING -
\$135,000! Col.
w/2BRS, mod kit;
new windows, siding & roof. On 220' deep lot.
Low taxes.
MOD COL, fam rm, 3 BRS, att gar, deck, on 50 x 100 lot. \$160's - make offer! REALTOR:
RECORDS REALTY
3 High St., Nutley
667-5500

Advertise!

BELLEVILLE
TWO FAMILY
3 over 3. Nat trim.
2 fin rms in bmt.
One car gar. Reduced to \$154,900. Broker:
HANCOX REALTY
667-9115

Belleville - Cape.
6 ms, 3 BRS, 1.5 baths, fin bmt, gar. Move-in-cond. Asking \$139,500.
Call 759-6692

CRESTWOOD, ADULTS
(55+) 7,500 Homes,
40 styles \$20,000 to \$140,000. Over 50 clubs & organizations shopping, transportation.
Free Brochure
1-800-631-5509,
HEARTLAND REALTY
Realtors
P.O. Box D,
480 Rt 530,
Whiting, NJ 08759

LONG BEACH ISLAND
An island paradise within an easy drive. For friendly, professional service, call
HCH Inc. Realtors.,
609-494-3311.
Call for the latest info.

Nutley
5 BR-COL.
87 Hillside Avenue
features FDR, 1 1/2 bths. (new) Lg. EIK, 60 x 160 lot, all new roof, heating unit, plumbing & elec. Many other extras!! Must be seen!!
D.P. LETTINI
R.E. Broker 450-8121

SPACE AVAILABLE
CALL:

NUTLEY
COL, 3 BRS, mod bath, lg mod kit, den, pabo, gar & rec rm. Priced to sell! Low \$180's.
RED - \$140's! 3 BR home, 2 baths, 2 car gar, on wide lot. Needs update! REALTOR:
RECORDS REALTY
3 High St., Nutley
667-5500

OPEN TO OFFERS
BLOOMFIELD
LARGE COLONIAL
74 EVERGREEN AVE.
4 BRS, mod kit, FDR, LR w/frpl. Reduced to \$139,900.

COLONIAL
149 LEXINGTON AVE.
3 BRS, mod EIK, FDR, LR w/frpl, 2 car gar, open bsmt. Asking \$115,000.
PILGRIM REALTY
759-3349

APARTMENTS FURNISHED

Bloomfield furnished
2 1/2 m studio non-smoker. Bus person pref.
All utils supp 429-7373

APARTMENTS UNFURNISHED

Belleville - 3 ms,
3rd flr. Spotless. Avail May 1. \$650 incl H&W. Kids & pets welcome.
Will accept TRA.
Call 484-0148

BELLEVILLE - 1 & 2 BR
ultra mod garden apts in quiet community. Extras incl W/W carp., H/HW, laundry room, safe parking & best deal in the area.
Call 759-8379

Belleville 4 & 5 m
apts for rent. No Fees! Available immediately
201-779-4465

Belleville - 3 1/2
m apt. \$550 incl H&W. 1 1/2 mo sec.
Call 759-1637

BELLEVILLE
NO FEE
1 BR Gardenette. Newly refurbished. Refrig, stove, D/W, H/HW, laundry fac & prking incl. \$550
★ **CASALE** ★
REALTOR 751-2300

BELLEVILLE 3 ms
mod. apt. All utils, sup. 1 mo. sec. Avail now. Call 751-9467

Belleville - 4 ms,
2nd flr. Heat sup. Avail 6/1. Off street prking. \$700. Call 667-7171

Belleville - Lg 2 1/2
ms. \$525 incl all util. A/C, W/D hook-up. Avail immed. Call 751-2791

BELLEVILLE
5 1/2 ms. \$850 + util. 2nd flr, prking, laund. Avail immed.
★ ★ **MARZULLI** ★ ★
Realtor 743-2306

BELLEVILLE
3 1/2 ms. \$600 incl H/HW.
★ ★ **MARZULLI** ★ ★
Realtor 743-2306

BELLEVILLE
Grdn apt. Avail May 1 and June 1. \$800 incl ht, prking, laund. 2nd flr.
★ ★ **MARZULLI** ★ ★
Realtor 743-2306

Belleville - 1st flr.
Lovely 5 ms, child O.K., yard. \$800 +. Avail now.
TERRY LUCAS, Broker
773-4700

BELLEVILLE-3 ms,
3rd flr, H/HW incl \$475. 5 1/2 ms, 2nd flr, supply own utils. \$750. **BLOOMFIELD-3 mod** ms, 2nd flr, h/hw incl. \$475.
NUTLEY-3 mod ms 2nd flr supply own utils \$600. **KEARNY-5 1/2 mod** lge ms, 2nd flr. Supply own utils. \$700. per mo. **METRO AGENCY**
REALTOR 751-3400

BELLEVILLE
4 ms, 2nd flr., near buses. 1 month security. 235-1663 after 5.

Bloomfield/No. Newark
border. 6 ms. Avail May 1. 2 fam brick. \$625. Call 779-1696

BLOOMFIELD
Glenwood Gardens
3 1/2 lg, ultra mod ms, w/w capt., h/hw supt. Laund fac on premises, prking space. Call 743-8866/748-9302

Bloomfield 5 rms.
2 BR, \$800. plus utils. & sec. 743-8183

Bloomfield-3 BR,
LR, DR, Kit, lg yard, 1st flr. \$850. Avail 5/1 Contact Bill eves. 908-317-9457

BLOOMFIELD
Location value. 3 1/2 ms. Spotless, w/new kit, new appl, newly fin hardwood flrs, great closets, H&H/W & on site laund. Well maint. Trans to N.Y. All conv at front door.
CALL 743-7261

Bloomfield - Lg 2 1/2 m
apt. \$575, heat, hot water, gas & elec incl. N.Y. bus at door.
Call 429-8444

BLOOMFIELD
Grdn apt. 1 BR. Prking, laund, A/C, refrig. \$625 incl H/HW.
★ ★ **MARZULLI** ★ ★
Realtor 743-2306

NUTLEY
Aria Landra Apts.
Passaic Avenue
1 Bedroom includes H/HW, gas cooking, W/W carpets. No pets. From \$695.00
201-235-1683
201-473-2800

NUTLEY
2 ms, \$470 all util incl.
4 ms, \$550 + util.
3 1/2 ms, \$625 h&h/w incl.
3 ms, \$650 all util incl.

BELLEVILLE
4 ms, \$500 + util.
4 1/2 ms, \$550 h&h/w incl.
4 ms, \$500 + util.
3 1/2 ms, \$689 h&h/w incl.
5 ms, \$900 + util.

BLOOMFIELD
2 1/2 ms, \$425 h&h/w incl.
2 ms, \$450 h&h/w incl.
3 ms, \$550 h&h/w incl.
5 ms, \$725 + util.
6 ms, \$850 + util.

COSTANTINE
REALTY
REALTOR 667-7070

SPACE AVAILABLE
CALL:

NUTLEY
2 ms, bmt, \$525 inc. 2 1/2 m apt, \$550 inc. 3 m Grdn, \$625 inc ht. 4 ms, \$800 + util. 4 1/2 ms, \$900 + util. 7 ms, \$900 inc ht. **HOUSE RENTAL - 5 m** Duplex, all mod, 1 1/2 baths, \$975 + util.
CENTRE REALTY
REALTOR 667-5100

Nutley - 4 m apt.
Mature business woman pref. \$700 incl H&H/W. Avail May 1. 284-0115

Nutley ultra mod 1 1/2
BR, 2nd flr. Res. area. Off St. prking. H&H/W inc. Avail immed. 647-7805

NUTLEY- 5 ms, 2 BR,
1st flr. 2 fam. \$675. plus hhw. avail 5/1.
235-1266

Nutley-5 ms, 2 BR,
2nd flr, off st. prking. Avail 5/1. Laundry rm. \$800. + utils. 336-0551

BELLEVILLE
Save money on this 2 BR Apt/Condo. Rent \$775 incl H&H/W, with option to buy at \$74,500.
MONTELL AGENCY
759-6900

BLOOMFIELD
2 BRS, 2nd flr, A/C, W/W, lge ms, DW, stove, refrig, wash/dry. \$950 + util.
★ ★ **MARZULLI** ★ ★
Realtor 743-2306

FOR RENT
Nutley Prime Location
Plenty of Free Parking
STOREFRONT \$675 mo.
Approx. 600 sq. ft.
3 ROOM MODERN OFFICE \$675 mo.
2nd floor approx. 600 sq. ft.
- NO FEE -
Call:
Costantine Realty
289 Franklin Ave.
Nutley • 667-7070

NUTLEY
"Business Center".
1100 sq ft. Prking nearby; \$1400 + util. Call realtor for details.
"Res Area". Lg store w/bsmt & prking; mod bldg near Centre St. \$1250 + util. REALTOR: **RECORDS REALTY**
3 High St., Nutley
667-5500

Belleville-Silver Lake
Garage w/office. 2000 sq. ft. Clean, heated Lg overhead door 778-4966

NUTLEY - PROF office
space in res area! Former physician's practice. Wait rm, off area & 3 exam/therapy rms, all furnished! 600 sq ft/prking. Near public trans & hospitals. For details call REALTOR: **RECORDS REALTY**
3 High St., Nutley
667-5500

BELLEVILLE - Storage
for rent \$65.00
Call 482-2272

RENT

Bloomfield Center
Store Front
1100 Sq. Ft.
743-5331

Attention Landlord!
Apts Wanted. We screen all prospective tenants. No fee to landlord.
COSTANTINE REALTY
289 Franklin Ave., Nutley
REALTOR 667-7070

Family of 3 adults
needs 2/3 BR apt. in Belleville near High School. 235-8201 9-5pm aft. 5781-4650.

LANDLORDS!!
We have applicants screened and waiting for your clean apt. No cost to you. Call us today!!
★ ★ **MARZULLI** ★ ★
Realtor 743-2306

THE SERVICE DIRECTORY

The Best People to Service You are Only a Phone Call Away.
Why Not Call Them Today?

LANDSCAPING
COLABELLI LANDSCAPING CONTRACTORS
• Maintenance & Designs
• Shrubs • Mulching • Stone
• RR Ties • Pavers • Sod
~ **SPRING/FALL CLEAN-UPS** ~
FREE ESTIMATES
20% OFF ALL NEW LANDSCAPING DESIGNS
Special Expires 6/30/94
751-0588

FRED'S
• Spring Clean-Ups
• Weekly Maintenance
• Free Estimates
"ONE CALL DOES IT ALL!"
10% OFF ANY LAWN SERVICE
WITH MENTION OF THIS AD.
EXPIRES 2/30/94
Lawn Care etc. . .
661-3565

LAWN
SINCE 1961
• Weed • Insect • Disease Control & Natural Fertilizers
509-9400
FREE ESTIMATE & LAWN EVALUATION
\$50. OFF PRE-PAID ANNUAL PROGRAM OR
\$15. OFF INITIAL SERVICE WITH THIS AD
*For New Customers Only NB

CONSTRUCTION
ATTENTION HOMEOWNERS:

ADD A COMPLETE NEW LOOK TO YOUR KITCHEN AT A FRACTION OF THE COST OF REMODELING!
CALL

The "COUNTERTOP CONNECTION"
450-1900

* Custom Countertops made on the PREMISES
* Many styles & colors to choose from.
Conveniently located in Belleville

GENNA TILE
Complete Bathroom Modernization
No job too "small" or too "BIG"
661-5172

JOE GRADY
Ceramic Tile Installed
Regrouting Repairs
"Complete Modernization"
Fair Honest Prices
Free Estimates
CALL 667-1776

FREE SERVICE
FRIENDLY TREE SERVICE, INC.
A FAMILY BUSINESS
• Pruning & Shaping • Insured
• Ornamental Landscaping
• Emergency Service
• Plant Health Care
• Stump Grinding
• No Job Too Small
• Firewood
744-2623
• Free Wood Chips

POWER WASHING
Give Your House A Bath
AMERICAN TRI-STATE CONTRACTORS
POWER WASHING
SPRINGTIME SPECIAL!!
Get Your Gutters Cleaned Free With Every House Power Washed.
We Clean All
• Siding • Brick • Patios • Decks
FREE ESTIMATES - FULLY INSURED
RESIDENTIAL/ COMMERCIAL
667-5837
offer expires April 30, 1994

DIAMOND POWER WASHING
Commercial & Residential
For Free Estimate Call: 661-1355
CLEAN: Vinyl & Aluminum Siding Decks, Garages, Stucco Brick
DEGREASE: Car & Truck Engines & Restaurant Hoods Floors
GUTTERS CLEANED FOR FREE

CONSTRUCTION
DE NICOLA CONSTRUCTION CO.
Bloomfield, NJ
• Residential • Commercial
Over 40 Years Experience
661-1553

DEBONAIR CLEANING MAINTENANCE SERVICE
Commercial/Residential
Call Joe Urbanowski
743-8183 Free Est.

POLISH TOUCH CLEANING SERVICE
Comm/Residential
10 yrs in Business
Professional work
For Free Estimate
Call Ewa 998-0426
SPACE AVAILABLE

NATIONAL REPAIR & REMODELING CONST CO.
• Roofing • Siding
• Additions • 15 yrs exp
Please call me
Carmine D'Allegro, owner.
Thank you. 786-8038

ELECTRICIANS
AURIEMMA ELECTRIC
Electrical Contractors
Over 50 years of Service
• RES. • COM • IND
Free Estimates
751-5926
LIC#1660
DE LIZIO ELECTRICAL CONTRACTING
• Ind. • Res. • Com.
• Free Estimates
No job too small/Too far
CALL 661-2937
License #11608

ROMAN & ROMAN
Electrical Contractors
• All Types of Electrical Work
• Fully Insured • Free Est.
• 10% off with this ad.
Lic. #11496 751-0390
FENCE
DOWLING FENCE INC.
• Expert Installations
• Chain Link
• Decorative Wood
Repairs Free Estimates
• Res. • F. • Ind.
284-1289

GARAGE DOORS
Mc DANIEL
Enterprises Co.
GARAGE DOORS
Electric Door Openers
Sales Service
Installations
Free Est. Fully Insured
ESTABLISHED 1973
667-3943

GUTTERS
• GUTTERS & LEADERS
• Cleaned • Repaired
• Replaced
• Roof & Siding Repairs.
• Int/Ext. Painting.
CALL AL ROBERTS
751-5442 Free Est.

BILL'S GUTTER SERVICE
• Gutters & Leaders
• Cleaned & Flushed
• Screening & Repairs
• Minor Tree Trimming
338-0448

***CORPORA* & SONS, INC.**
Est. 1942 50 Yrs. Exp.
Aluminum & Vinyl Siding
Roofs/Doors/Additions
Repairs/Windows/Gutters
• 429-9266 •

HOME IMPROVEMENT
25 Years Exp.
• Carpentry • Kitchens
• Plumbing • Bathrooms
• Electrical • Rec. Rooms
• Decks • Porches • Encl.
• Roofing • Additions
• Window/Door Repl.
For Free Estimate
CALL 759-4317

NICOSIA & SONS
CONSTRUCTION CO., INC.
• Add a Level
• Dormers • Bathrooms
• Additions
• Kitchens
• Finished Basements
Built on Recommendation
35 Years Experience
Free Est. Fully Ins.
751-7171

ROOFING GUTTERS
• Siding • Vinyl & Alum
• Wildlife Control.
• Chimney Caps.
• Free Estimate
Call Bob 751-4155
R.C. HOME IMPROVEMENTS
LANDSCAPING

BOB CAT LANDSCAPING
• SPRING CLEANUPS
• FULL SERVICE
CALL FOR FREE ESTIMATE
• 991-8204 •

DURANDO LANDSCAPING
Specials on Spring Clean-Ups & Gutter Cleaning.
• Planting
• Sod
• Seed
• Fertilization
Fully Insured
Free Estimates
Reasonable Rates
933-2162

GLEN'S GRASS SERVICE
Spring & Fall Clean-Ups
• Thatching • Seeding
• Fertilizing • Sod
• Hedge Trimming
• Weekly Maintenance
Free Est. 748-9408

MASONRY
ALL TYPES OF MASONRY
• Steps • Sidewalks
• Patios • Additions
• Retaining Walls
• Renovations • Decks
• Roofing • Siding
• Replacement Windows
• Kitchens • Bathrooms
Free Est/Fully Ins.
Call Sal 667-0157

G. BASILE GENERAL CONTRACTOR
• Masonry Work
• Landscape • Railroad Ties
• Sidewalks & Patios
• Driveways • Fencing
450-8511
GABRIELE MASONRY
All Kinds of Masonry
• Brick & Block Work
• Steps • Sidewalks
• Patios • Foundations
• Bent Waterproofing
• Ceramic Tile
Free Est. 759-6793

J & B MASONRY CONTRACTORS
Fully Insured/Free Est.
All Types of Brick & Block Work
• Sidewalks • Patios
• Interlock Pavers
• Foundations • Steps
• Belgium Blocks
• City Work • Reas Prices
• Complete Additions
661-0532

MASONRY SPECIALISTS
LaFERRIERE & SONS
"Over 2 Generations of Exp"
• Sidewalks • Steps
• Brick Work • Plastering
• Retaining Walls
• Patios, etc.
QUALITY WORKMANSHIP AT REASONABLE PRICES
667-3790 or 226-0571

P.A. CARSILO & SONS INC.
MASONRY
• Driveways • Sidewalks
• Stairs • Plastering
• Retaining Walls
• R.R. Ties • Backhoe
• Waterproof
• Fully Ins. • Free Est.
678-8390

PLASTERING:
Patch-work Specialists.
Specialize ONLY in drywall & plaster repair work. Old/new. Free Est.
"No Patch Too Small".
338-6410. 25 Years Exp.

PAUL'S MOVING & TRUCKING CO.
• Local & Long Distance
• Packing & Light Deliveries
Lic. PM000487
678-6440

ANY 3 ROOMS PAINTED
\$199.00 PLUS PAINT
• Fast, Clean Work
• Husband & Wife Team
• Sammy & Barbara
667-7440
ANTHONY VICARO PAINTING
• Interior & Exterior
• Popcorn Ceilings
• Power Washing
• Free Estimates
450-4401

BILL Mc DONALD PAPERHANGING
Residential/Comm.
• Trained by THE PAPERHANGING INSTITUTE
Free Est 667-8834

DANISH PAINTING CO.
• European Quality Craftsmanship
KENNETH HANSEN
751-5521
ED STELLEY PAINTING
• Interior/Exterior
• Painting
• Staining/Varnishing
Free Est. Fully Insured
450-6842

INTERIOR EXTERIOR
• Free Estimates
• Wall Paper Removal
• Reliable & Quality Work
Call NICK 748-6379
Fully Insured

R. BURGHARDT PAINTING & PAPER HANGING
25 YEARS EXPERIENCE
• FREE ESTIMATES
BOB 667-4476

Victor Tironola
Painting Contractor
INTERIOR & EXTERIOR
35 Years Exp.
Also Gutters, Leaders & Gen. Repairs
Call 667-1893

Keep Your Plumbing Young
J.G. YOUNG & SONS, INC.
PLUMBING HEATING AUTOMATIC FIRE SPRINKLER SYSTEMS
State License
No. 2684 & No. 950
REMODELING
• Kitchens & Bathrooms
Remodeled
• Gas Heat
• Hot Water Heaters
• Electric Sower
• Cleaning
• Residential, Commercial & Industrial Repairs
• Alterations
• New Construction
14 New St. Belleville
758-1475

WINDHEIM PLUMBING & HEATING
418 Franklin Ave.
NUTLEY
• Gas Heat
• Hot Water Heaters
• Disposals
• Dishwashers
• Modernizing Bathrooms
Kitchens
667-6886
Lic. #143
We accept:
• MasterCard • Visa
• Diner's Club • Carte Blanche

RE-NU-IT
Professional Refinishing
• Fridges • Stoves
• Cabinets • Tub/To
• Furniture Free Est
751-2359

ACE TREE SERVICE
Tree Removal • Topping
• Pruning • Trimming
• Stump Grinding
• Snow Plowing
Fully Ins. Free Est.
224-0000

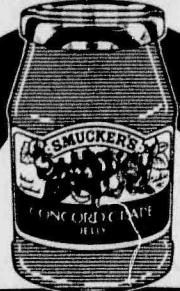
LOCKED-IN SAVINGS NOW THRU APR. 30th

ShopRite and
always
SAVE



Happy Easter
From All Of Us At ShopRite

Why Pay More™



Smucker's Grape Jelly

3-lb. jar **.99**

Any Variety



ShopRite Can Soda

8 1⁰⁰

12-oz. cans Plus Dep. Where Req.

Look For The **LOCKED-IN SAVINGS SIGNS** Throughout The Store



Green Giant Vegetables

Any Variety, Frozen Boxed Prepared in Butter, Cheese or Cream Sauce

10-oz. box **.99**

Clear or Natural



Mott's Apple Juice

1/2-gal. btl. **1³⁹**

NOW THRU APR. 30

Why Pay More™



Jif Creamy Peanut Butter

1-lb. 12-oz. jar **2⁹⁹**

NOW THRU APR. 30

Blue, Orange, Purple or Red



Hawaiian Punch 9-Pk.

76.05-oz. tot. wt. pkg. **1⁹⁹**

NOW THRU APR. 30

Any Var. Old Country



Hunt's Spaghetti Sauce

26.25-oz. jar **.99**

NOW THRU APR. 30

Packed in Oil or Water



ShopRite Chunk Light Tuna

6 1/8-oz. cans **5 2⁹⁹**

NOW THRU APR. 30

Liquid



Ajax Ultra Detergent

50-oz. btl. **1⁹⁹**

NOW THRU APR. 30

Coronet



Big n' Pretty Napkins

300-ct. pkg. **.99**

NOW THRU APR. 30

Why Pay More™



ShopRite 9" White Plates

150-ct. pkg. **1⁹⁹**

NOW THRU APR. 30

Tyson/Holly Farms 9 Thighs, 9 Drumsticks & 9 Wings



27 Piece Fryer Parts

lb. **.99**

NOW THRU APR. 30

Why Pay More™



Blue Bonnet Spread

3-lb. cont. **1³⁹**

NOW THRU APR. 30

Neufchatel or



ShopRite Cream Cheese

8-oz. bar **.59**

NOW THRU APR. 30

In Fresh Bake Shoppe, Where Avail.



Strawberry Shortcake 7"

24-oz. **4⁹⁹**

NOW THRU APR. 30

The MEATing® Place

Tyson/Holly Farms



Whole Fryers

1/2 PRICE **.49**

lb.

Beef First or Center Cut




Chuck Steak Or Roast

lb. **1³⁹**

USDA CHOICE

The Produce Place

Red or Thompson



Seedless Grapes

lb. **.99**

Vitamins 'A' & 'C'



California Broccoli

14 SIZE each **.99**

Tyson/Holly Farms Whole



Quartered or Cut-Up Fryer

lb. **.69**

U.S.D.A. GRADE A

W/Rib Cage, Whole Chicken Breast or Value Pack, 6-Lbs. or More



Perdue Split Chicken Breast

lb. **1⁷⁹**

U.S.D.A. GRADE A

From Pork Loin, 9-11 Chops



Pork Chop Combination

lb. **1⁸⁹**

U.S.D.A. GRADE A

(Good Apr. 3-9) Frozen



Topp's 10 Lb. Pkg. Hamburgers

15⁴⁹

SAVE AN ADDITIONAL 1.00 PER PKG. WITH PRICE PLUS club Discount

Boneless Beef



Shoulder London Broil

lb. **1⁹⁹**

USDA CHOICE

Pork Loin, Rib Cut Roast or




Center Cut Pork Chops

lb. **2⁹⁹**

SAVE 1.00 per lb.

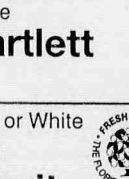
Vitamin 'C'



California Strawberries

1-qt. cont. **1⁹⁹**


Juicy 100 Size



Red Bartlett Pears

lb. **.49**

40 Size, Pink or White

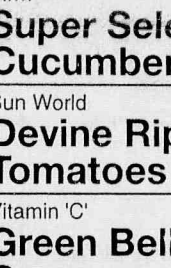


Florida Grapefruit

for **3 1⁰⁰**

U.S. FRESH FROM THE TREE

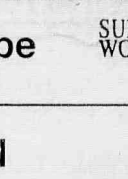
Firm



Super Select Cucumbers

for **3 1⁰⁰**

Sun World




Devine Ripe Tomatoes

lb. **.99**

SUN WORLD

Vitamin 'C'



Green Bell Peppers

lb. **.99**

The Dairy Place

Not From Concentrate



ShopRite Premium Orange Juice

1/2 PRICE **.99**

64-oz. cart.

Why Pay More™



Thorn Apple Valley Sliced Bacon

2 3⁰⁰

1-lb. pkgs.

Store Sliced



Blue Boar Imported Ham

lb. **2⁹⁹**

Good Sun. Apr. 3-9 thru Sat. Apr. 9, 1994

Frozen or Thawed

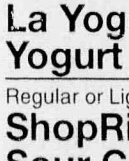


Swordfish Steaks

ShopRite Sale Price **4⁹⁹**

YOU SAVE AN ADDITIONAL 1⁰⁰ PER PKG. (1-LB. OR MORE) With Price Plus club Discount

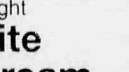
Any Var. Sabor Latino or



La Yogurt Yogurt

6-oz. conts. **3 1⁰⁰**


Regular or Light



ShopRite Sour Cream

1-pt. cont. **.69**

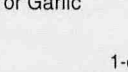
Any Var. Big N' Juicy or



Oscar Mayer Beef Franks

1-lb. pkg. **1⁹⁹**


10.2-Oz. Pickles To Go or Garlic or Kosher



Vlasic Pickles

1-qt. cont. **1⁶⁹**

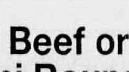
Store Sliced



Danish Swiss

lb. **3⁹⁹**

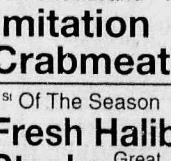
Store Sliced



Corned Beef or Pastrami Rounds

lb. **3⁹⁹**

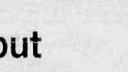
Sea Shell Brand



Imitation Crabmeat

2-LB. PKG. 5.48 lb. **2⁹⁹**

1st Of The Season



Fresh Halibut Steaks

Great Grilled! lb. **6⁹⁹**

The Frozen Foods Place

Grade 'A' Reg. or Crinkle Cut



ShopRite Potatoes

1/2 PRICE **1¹⁴**

2-lb. bag

7.1-Oz. Filter Packs, 12-Oz. Lite Drip or French Roast or Reg., Auto Drip



Maxwell House Ground Coffee

EXCEPT DECAF. **1⁶⁹**

13-oz. can

Your Choice



ShopRite Corn or Vegetable Oil

1-gal. btl. **3⁹⁹**

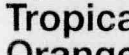
Giant or Jumbo



Wonder White Bread

22-oz. loaf **.99**


Regular or Country Style



Tropicana Orange Juice

12-oz. can **.99**

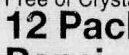
Regular or Reduced Calorie



ShopRite Mayonnaise

1-qt. jar **.99**

Mountain Dew Reg., Diet, Caff. Free or Crystal



12 Pack Pepsi

Plus Dep. Where Req. 12-packs 12-oz. cans **2 5⁹⁹**

Good Apr. 3-9 20-Oz. ShopRite Wheat or White



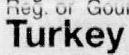
Split Top Bread

ShopRite Sale Price **.99**

LESS PRICE PLUS club Discount **-.20**

.79

Reg. or Non-Fat Frozen Yogurt or Reg. or Gourmet Lite



Turkey Hill Ice Cream

1/2-gal. cont. **2⁹⁹**

15 Oz. Loaf, Reg. or Wheat

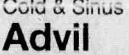


Large Italian Bread

free!

BUY ONE, GET ONE FREE


Cold & Sinus



Advil Tablets

20-ct. pkg. **3³⁸**

Now On Sale



"The Fugitive" On Video Cassette

16⁹⁹

ea.

34AB9 VALUABLE COUPON (MFR)

12-Oz. Box

General Mills Total Cereal

free!

SAVE 3.49

With This Coupon, Limit one per family. Good at any ShopRite. Sun. Apr. 3 thru Sat. Apr. 9, 1994.

ShopRite Coupon

1000-Ct. Rolls, Any Variety

Scott Bath Tissue

3 1⁰⁰

FOR

With This Coupon, Limit one per family. Good at any ShopRite. Sun., Apr. 3 thru Sat., Apr. 9, 1994.

ShopRite Coupon

2-Ltr. Btl., Reg., Diet, Caff. Free, Cherry,

Coke Classic, Sprite or Minute Maid

6 3⁹⁹

FOR

Plus Dep. Where Req.

With This Coupon, Limit one per family. Good at any ShopRite. Sun., Apr. 3 thru Sat., Apr. 9, 1994.

ShopRite Coupon

U.S. #1

5-Lb. Bag Idaho Potatoes

.99

With This Coupon, Limit one per family. Good at any ShopRite. Sun., Apr. 3 thru Sat., Apr. 9, 1994.